

A YEAR IN THE LIFE OF A TREE

Fill in the gaps with the missing words

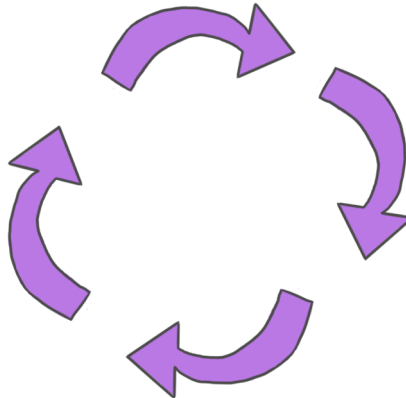
beetles acorns spring ground orange
autumn leaves birds insects squirrels



4. In winter, the last of the tree's _____ fall off and land on the _____. The tree will now rest until spring time, when the life-cycle starts all over again.



1. In _____, trees grow their leaves. The trees make for a good home for lots of animals like birds and _____. The _____ make nests in the trees and raise their baby chicks.



3. Trees stop growing during _____, and their leaves often turn _____, yellow and brown. The leaves start to fall off and make an excellent home for lots of insects like _____.



In summer, the trees produce seeds. The oak tree seeds are called _____. Some of the seeds will fall off the tree onto the ground and become new trees. Other seeds will be eaten by animals like _____.



Taking care of trees at our visitor sites: It's important for the rangers, who look after our trees to know the yearly life-cycle of a tree. This is because if a tree doesn't follow the right cycle it could mean that it is not in good health.