

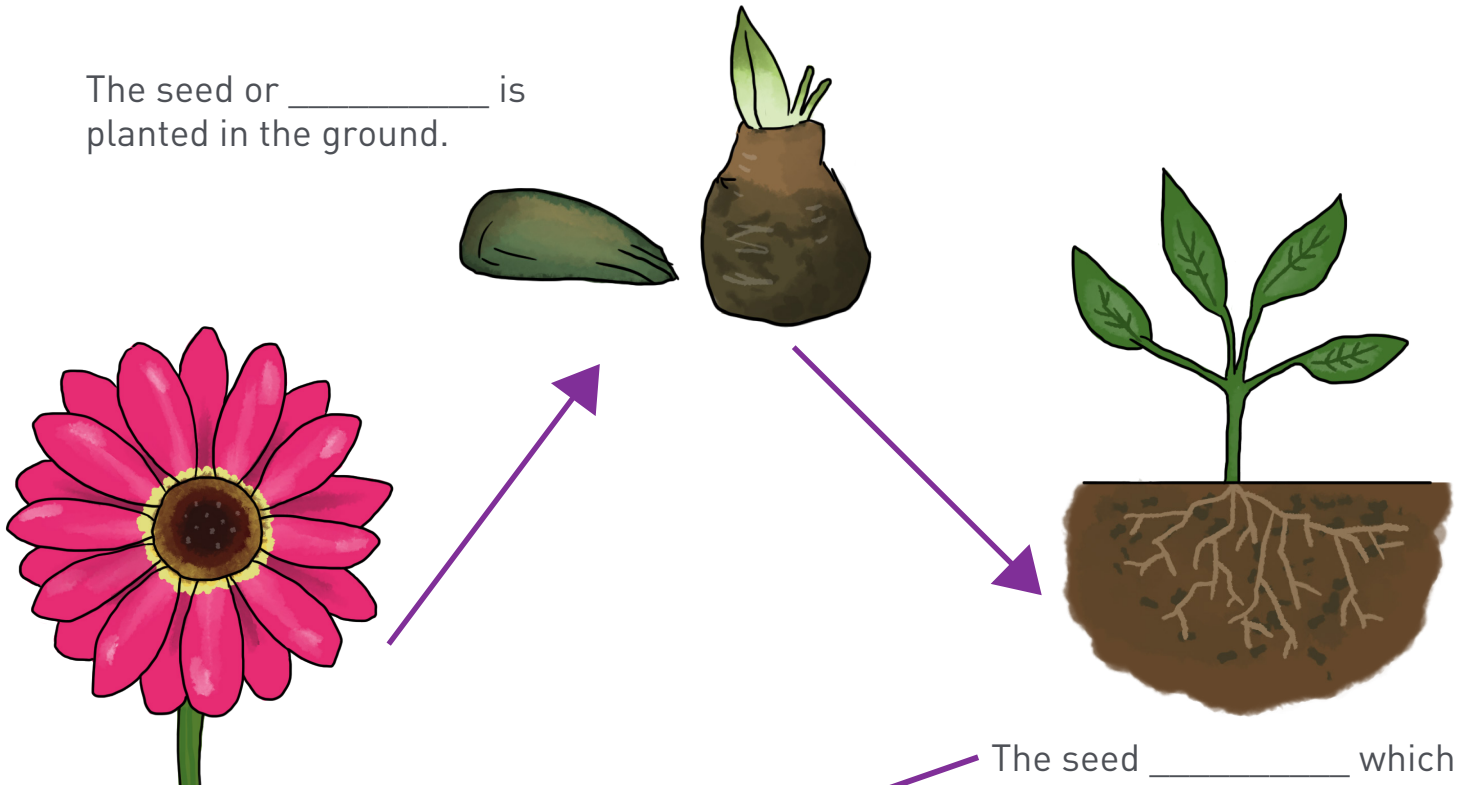
# PLANT LIFECYCLE

Fill in the gaps using the words below to complete the plant's lifecycle.

seeds      bulb      ground  
 roots      germinates      shoots



The seed or \_\_\_\_\_ is planted in the ground.

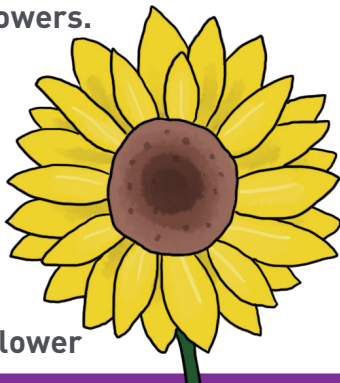


The plants grow their own \_\_\_\_\_, which fall onto the \_\_\_\_\_ and the lifecycle starts again.

The seed \_\_\_\_\_ which means it starts to grow \_\_\_\_\_ and \_\_\_\_\_. The roots grow below the soil and shoots grow up above.

## Do you have self-seeding plants or flowers in your garden?

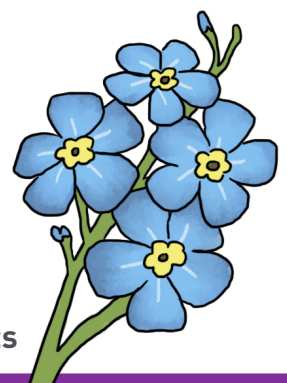
Self-seeding garden plants drop their seeds at the end of the season when they die and re-grow the following year. There are lots of plants and flowers that self-seed like Violets, Forget-me-nots and Sunflowers.



Sunflower



Violets



Forget-me-nots