

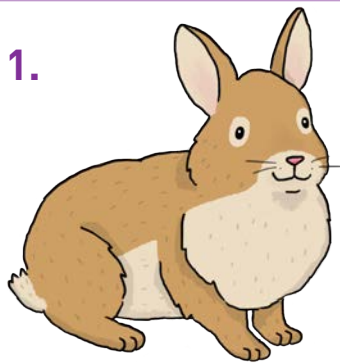
# FUN ANIMAL FACTS

Here are examples of some of the wonderful animals that live at our visitor sites! Test your animal knowledge by choosing which words below complete the sentence.

*Don't worry if you get them wrong at first - it's good to learn!*



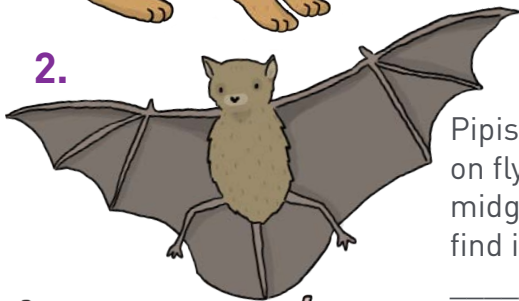
waterproof echolocation water frogs tadpoles fish mammal deer feathers  
 herbivores ducks rabbits burrows feathers eggs sheep bats warren gills grass  
 owl environment burrows feathers eggs sheep bats warren gills grass



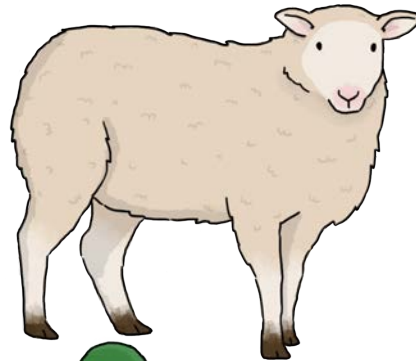
1. \_\_\_\_\_ live underground, in \_\_\_\_\_. A group of burrows is known as a \_\_\_\_\_.



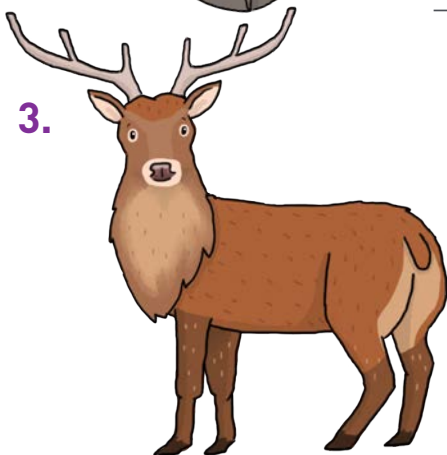
5. \_\_\_\_\_ lay their \_\_\_\_\_ in water. The eggs hatch into \_\_\_\_\_, which live in water until they metamorphoses into adult frogs.



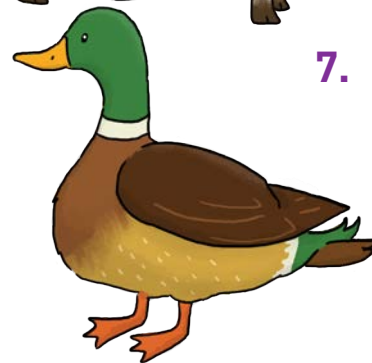
2. Pipistrelles \_\_\_\_\_ feed on flying insects like midges and moths, they find in the dark by using \_\_\_\_\_.



6. \_\_\_\_\_ are \_\_\_\_\_ that eat vegetation such as \_\_\_\_\_. Their digestive system has four chambers; which help break down what they eat.



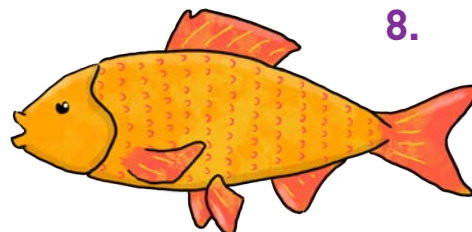
3. The Red \_\_\_\_\_ is Britain's largest land \_\_\_\_\_. Their habitats include grassland, forest, mountains & moorland.



7. \_\_\_\_\_ feed on aquatic plants, small fish, insects, worms, grubs and more. Their \_\_\_\_\_ have a waxing coating and interlock making them highly \_\_\_\_\_.



4. The colours of an \_\_\_\_\_'s \_\_\_\_\_ work like a camouflage and helps them to blend into their \_\_\_\_\_.



8. \_\_\_\_\_ are vertebrate animals that live in the \_\_\_\_\_. Their \_\_\_\_\_ extract the oxygen from the water.