

# Development Services and New Connection Charging Arrangements

1 April 2026 to 31 March 2027



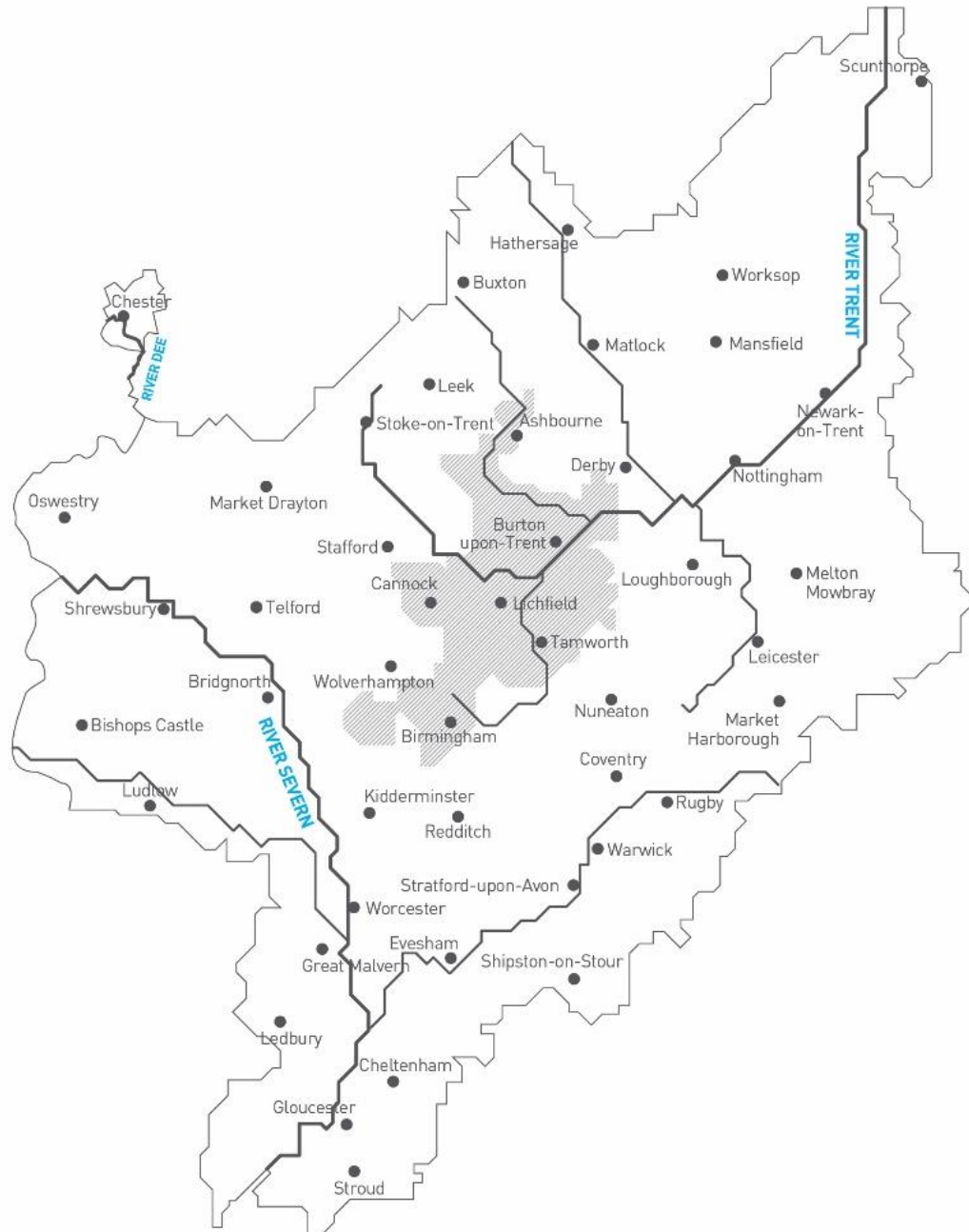
# Contents

Where we operate.....	3
About this document.....	4
Applications .....	7
Infrastructure Charges .....	17
Environmental Components & Environmental Incentives .....	21
Service Connections .....	28
Meter Charges.....	36
Mains Requisitions .....	38
Self Lay Providers .....	48
New Appointments and Variations .....	53
Sewer charges .....	58
Miscellaneous charges.....	65
Typical Worked examples.....	66
Glossary .....	91
Appendix 1 - Exceptions to standard charging .....	96

# Where we operate

Our region stretches across the heart of the UK, from the Bristol Channel to the Humber, and from the Welsh border to the East Midlands.

The grey area represents the region in which Severn Trent provides wastewater services only, and South Staffordshire Water provide the water services.



# About this document

Our Charging Arrangements outline the costs for connecting to our water and sewerage networks, as well as any associated development work. These charges have been developed in accordance with guidance from the Department for Environment, Food and Rural Affairs (Defra) and the charging rules set by the Water Services Regulation Authority (Ofwat). You can find more information on Ofwat's charging rules [here](#).

How to apply for a connection is set out from page 7.

**These Charging Arrangements cover the period 1 April 2026 to 31 March 2027.** The charges in this document supersede all previously published charging arrangements.

Throughout this document, the term “developer” refers to all our customers who are building and developing.

## These Charging Arrangements do not cover:

**Disconnections:** If you need to disconnect the water supply to a property, either temporarily or permanently, it's important to understand the different options available to you. Take a look at [disconnections](#) on our website for more information.

**Connections to substantially altered properties:** If you've altered your home or business premises, or plan to do so in the near future, it's important you let us know. Take a look at our [website](#) for more information or give us a call on 03457 500 600.

**Replacement pipework for a lead supply:** If you've found lead pipework in your home you'll need to speak to an [approved plumber](#) to find out how much it will cost you to replace it. Subject to [certain conditions](#) we'll replace the lead water pipe up to your property boundary for free. For further information please read our [replacing an existing supply](#) page on our website.

## VAT

**All charges shown in this document are exclusive of VAT, unless otherwise stated.** This is because VAT rules are dependent on the type of work and property concerned therefore it is not possible to set out the VAT liability for each item. Your quote will include VAT, if applicable, at the appropriate rate.

Broadly the VAT liability of our charges for water connections and mains, or sewer requisitions is determined by the type of properties that will be connected to our network. For example, if you have a new housing development and wish to requisition a new water main that will be used to connect houses during the course of their construction, our charges will be zero rated for VAT purposes. Whereas our charges for laying mains and making connections to existing properties, or commercial properties, will be subject to VAT at the standard rate; 20% at the time of publication. In addition, certificated VAT reliefs may apply to charges for the connection of certain residential or charitable properties and a reduced VAT rate of 5% applies to certain properties that are being renovated or converted for residential use.

## Common terms

Standard terminology is used across the sector and throughout the document. A Glossary of Common Terms is provided for reference from page 91.

## We're here to help

If you have any questions about our Charging Arrangements, please call our developer services team on 0800 707 6600. Our usual opening hours are Monday to Thursday 9.00am to 4.00pm and Friday 9.00am to 3.30pm.



# Choice in the market

The market for new infrastructure is open to competition meaning developers can choose who does certain works.

When a developer needs a new water or sewer connection, they have the following options:

Service Provider	Activity
<b>Severn Trent Water:</b>	<p>To complete works for water such as lay a new water main, complete a water service connection, and so on.</p> <p>To complete a sewer connection on your behalf if we elect to under S107 of the Water Industry Act 1991, or if you requisition an outfall across third party land under S98 of the Water Industry Act 1991.</p>
<b>Self Lay Provider (SLP):</b>	<p>To complete the works for water connections.</p> <p>SLPs can complete the works for water mains laying and service connections. To do this they are required to be accredited by <a href="#">Lloyd's Register</a> under the <a href="#">Water Industry Registration Scheme</a> (WIRS). A list of WIRS accredited contractors can be found <a href="#">here</a>.</p> <p>When a SLP provides a quotation or estimate of its charges to a developer it will include the charges of any non-contestable work that Severn Trent will be doing. If the SLP has asked Severn Trent to complete some contestable work, this will also be included in the quotation/estimate</p>
<b>New Appointment and Variation (NAV):</b>	<p>To complete the works for water and sewer connections.</p> <p>A developer can apply to a NAV to lay the water and sewer pipework for a development area, provided the site meets criteria set by our regulator, Ofwat.</p> <p>When the developer chooses this route, the NAV applies to Ofwat, for a New Appointment or Variation (to their licence) and, if approved, the NAV becomes the local water and/or sewer company for the area of the development.</p> <p>The NAV company has the same duties and responsibilities as the previous statutory water company, including for the operation and maintenance of the assets, customer service and billing within the area of its appointment.</p> <p>A NAV can apply directly, or on behalf of a developer, to Severn Trent for water and sewer connections to their areas of appointment. This will generally consist of connections from the site boundary to our existing network and is known as a "bulk supply" or "bulk discharge" arrangement for the water supply or waste connection respectively.</p> <p>You can find details of specific charges for NAVs from page 53.</p> <p>You can find our bulk water supply tariff for our NAVs in our <a href="#">Wholesale Scheme of Charges</a>.</p>

<b>Drainage Contractor:</b>	<p>To complete the on-site works and/or sewer connections.</p> <p>A drainage contractor can lay the sewer pipework. These need to meet Building Regulations and relevant adoption requirements. To connect to our sewer network the work will need to be approved, inspected and signed off as acceptable.</p> <p>Assets which are offered to Severn Trent for adoption must be designed and constructed to the Design &amp; Construction Guidance under the Codes for Adoption published by Water UK. A formal agreement using the national standard template needs to be completed. On completion of all works, and subject to meeting the requirements under the Code for Adoption, the assets will be vested as public sewers following a maintenance period (currently 12 months) and the completion of any legal requirements. After this time, we take on the responsibility for their operation and future maintenance.</p> <p>You can access the Design &amp; Construction guidance and all other Codes for Adoption documentation on the Water UK <a href="https://www.water.org.uk/sewerage-sector-guidance-approved-documents/">Website</a>  <a href="https://www.water.org.uk/sewerage-sector-guidance-approved-documents/">https://www.water.org.uk/sewerage-sector-guidance-approved-documents/</a></p>
-----------------------------	----------------------------------------------------------------------------------------------------------------------------------------------------------------------------------------------------------------------------------------------------------------------------------------------------------------------------------------------------------------------------------------------------------------------------------------------------------------------------------------------------------------------------------------------------------------------------------------------------------------------------------------------------------------------------------------------------------------------------------------------------------------------------------------------------------------------------------------------------------------------------------------------------------------------------------------------------------------------------------------------------------------------------------------------------------------------------------------------------------------------------------------------------------------------------------------------------------------------------------------------------------------------------------------------------------------------------

## Contestability

The connection work that is open to competition is known as “contestable” work. This includes the majority of work a developer needs to serve a new development and includes work to lay and test new mains and services. Because we have a responsibility to maintain wholesome water supplies to our existing end customers, some higher risk work will be defined as “non-contestable” and can only be carried out by us. Please refer to our separately published [Annual Contestability Summary](#) (ACS) for further detail. This is routinely reviewed and updated.

# Applications

## How to connect to our network

If you need a new connection for your own home, you'll need a water and/or sewer connection into our existing network. For larger developments with more complex requirements, you may need new infrastructure that supports the needs of your development.

## Who can apply for a new connection

The owner of the land, or someone who has significant interest in the land can apply for a new water and/or sewer connection. This may be an individual or a company.

We'll accept an application form from an agent or consultant working on behalf of the applicant, but it's the applicant who is responsible for the content included within the application form and, they must sign the declaration on the form.

## How to apply for a new connection

The easiest way to apply for your water and sewer connection is online via our [website](#).

You can also choose to download an application form and email it to us at [new.connections@severntrent.co.uk](mailto:new.connections@severntrent.co.uk) in a zip file along with any supporting documentation.

Alternatively, you can fill it in and post it back to us at the following address:

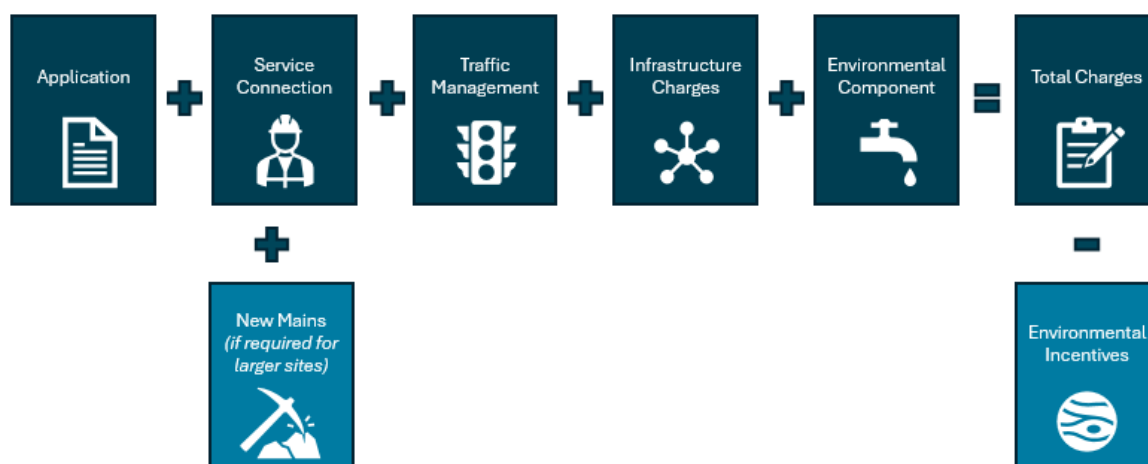
Severn Trent Water Limited  
Severn Trent Centre  
PO Box 5311  
Coventry  
CV3 9FL

We're also able to send you an application form in the post, if you'd like us to do this. Please contact us on 0800 707 6600. Our usual opening times are 9.00am to 4.00pm Monday to Thursday and 9.00am to 3.30pm on Friday.

We have guidance notes on our [website](#) which you may want to read before applying or use as a reference throughout the new connection process.

# Quotes

The cost of a new water connection typically consists of the following charge components:



## Quote validity

All our quotes, agreements and approval notices are valid for six months from the date of the covering letter, subject to change at our discretion.

If your requirements, specifications, or design change during the six-month validity of your quote, we'll need to provide a new quote. A requote or redesign fee will apply based on our published charges.

Quotes not accepted and paid within six months will be cancelled. If you still wish to proceed with the work, you'll need to submit a new application and pay the applicable fee according to our published charging arrangements

Activity	Quote validity period
<b>Service connections:</b>	<p><b>You have six months from the date your quote is issued to accept and pay your quotation and complete your connection.</b></p> <p>If you're unable to connect within this timeframe but still need the work, you'll need to request a new quote and pay the fee based on the current published charges.</p>
<b>Large Diameter Connections (LDCs):</b>	<p><b>You have six months from the date your quote is issued to accept and pay your quotation and complete your connection.</b></p> <p>If you're unable to connect within this timeframe but still wish to proceed with the work, you'll need to request a new quote and pay the relevant fee as set out in our published charges.</p> <p>Charges for individual properties that fall outside of the six-month quote validity period will be charged at the prevailing years rate.</p>
<b>Mains Requisitions:</b>	<p><b>Once you have accepted and paid for your quotation, you must commence these phases of work within six months of the quote being issued.</b></p>



<b>Diversions:</b>	For any future phases that commence in a different charging period, you'll need to apply for a requote and pay the appropriate fee as per our published charges at that point in time.
	<b>Once you have accepted and paid for your quotation, you must commence these phases of work within six months of the quote being issued.</b>
<b>All other work types:</b>	For any future phases that commence in a different charging period, you'll need to apply for a requote and pay the appropriate fee as per our published charges at that point in time.
<b>Plot/ property connections:</b>	By accepting and paying for your quotation you are agreeing to commencing works (dependant on types of works) within six months, as set out in your terms and conditions.
	Plot connections and related infrastructure will be estimated as a lump sum in your quote. These costs aren't payable until you're ready to call off or connect the plot. Please note, charges will be based on our published charges, in effect at the time you call off or connect.

## Validity of new connection quotations across charging years

Your quote is valid for six months, even if this period crosses into a new charging year. If your design or specification changes, or if the quote expires, you'll need to request a new quote and pay the relevant fee based on our published charges, applicable at that point in time.

If unforeseen circumstances mean actual costs differ significantly from your original quote, we'll reconcile using the rates from the charge year when your quote was accepted, even when the work takes place in the subsequent charge year. If you've overpaid, we'll refund the difference based on those original rates.

**Please note that completed applications for service connections received between 1 February and 31 March 2026 will be quoted using 2026/27 published charges:** Our reason for doing so is because construction and connection activity is unlikely to be completed before 31 March 2026 therefore the following years charges will apply. If the work is finished before that date, we'll requote at 2025/26 rates and refund any difference. No requote fee will apply. The same logic applies each year, and from 1<sup>st</sup> February 2027 our quotations will be based on the subsequent years rates (2027/28) which are yet to be published.

## Ensuring accurate and timely account set up

Once a new connection to our network takes place it is essential that new occupant details are provided to us, along with accurate meter details. Where these details are not provided, we will levy charges for the associated services provided to that property, for example: the fresh water supply as measured by the meter, wastewater charges and standing charges.

## Changes in Legislation

If unforeseen legislative changes occur between 1 February 2026 and 31 March 2027 that result in additional costs beyond our published charges, we will let you know as we will need to pass these costs on to you.

## How to pay

You can pay for any of our charges by credit or debit card or by BACS.

### Credit or Debit card

We accept all major credit and debit cards. To pay by card simply call our accounts team on 02477 715 204.

For your own protection please do not email your credit or debit card details to us.

---

### BACS

You can make a BACS payment to our bank account using the details below:

Bank:	Barclays
Sort code:	20-00-00
Account Number:	03398498
UTR Number:	054 37510 61510
Company Registration Number:	2366686
Reference:	<notification number or address/postcode of site>*

\*The notification number is the unique reference number that we'll send you when we acknowledge receipt of your application form. If this isn't provided to us it may delay or invalidate your application.

If you're making a payment ahead of receiving this number, please insert the address and postcode of your site to help us to allocate your payment effectively.

Payments in advance are not deposits therefore we will not pay interest on payments in advance.

---

**Application fees,  
initial enquiries, and  
requote/redesign  
charges**

Please note that all charges for applications, initial enquiries, requotes and redesigns are non-refundable.

All charges shown exclude VAT. Where applicable, VAT will be added at the appropriate rate.

## Requesting a copy of our water and sewer network plan

If you need to know where our water and/or sewer networks are located around your proposed development site, you can obtain a clean water and wastewater map directly from [www.digdat.co.uk](http://www.digdat.co.uk).

Access for individuals undertaking statutory work is free. You may be required to provide documentary evidence that your access is covered under statutory terms. If you are unsure, please contact the digdat service team for further guidance on 0800 085 8060.

**Note:** all details must be checked and not assumed to be correct.

Map requirement	Description	Charge
Water or sewer map	We'll send you a map of the Severn Trent water or sewer network within the area you request – size A4 or A3	£24.58
	We'll send you a map of the Severn Trent water or sewer network within the area you request – size A2	£25.42
	We'll send you a map of the Severn Trent water or sewer network within the area you request – size A1	£29.58
	We'll send you a map of the Severn Trent water or sewer network within the area you request – size A0	£42.08
Water and sewer map	We'll send you a map of the Severn Trent water and sewer network within the area you request – size A4 or A3	£30.25
	We'll send you a map of the Severn Trent water and sewer network within the area you request – size A2	£38.58
	We'll send you a map of the Severn Trent water and sewer network within the area you request – size A1	£46.92
	We'll send you a map of the Severn Trent water and sewer network within the area you request – size A0	£71.92

## Cancelled applications

If your application has been passed to the team for assessment and you then cancel your application, the fee is non-refundable. If you cancel your application before the assessment stage, you'll be charged the fee below and the remaining balance will be refunded. This applies to all application types.

Cancelled application	Charge
Fee for any application cancelled before an assessment has been carried out	£58.21

## Pre-planning enquiry

A pre-planning enquiry is used to find out if our existing network can supply your proposed development with water and take away your proposed sewerage flows. It will also confirm if your development will affect existing Severn Trent assets.

This type of enquiry is normally for larger residential sites or commercial sites that will have high water demand. It's best undertaken before planning permission is sought but can also be used at a later stage to support discharge of relevant planning conditions.

Pre-planning enquiry	Charge
<b>Water:</b> We'll let you know if our network is able to supply your proposed development site with water	£178.66
<b>Waste:</b> We'll let you know if our network is able to receive the flows from your proposed development site	£197.60
<b>Both:</b> We'll let you know if our network is able to supply your proposed development site with water and our network is able to receive the flows from your proposed development site	£280.60

## Application charges associated with water

When you've completed the relevant application form, please send it to us with the appropriate application charge, as shown in the tables below, along with any supporting information.

Once applications have been passed to the team for assessment, they become non-refundable. Applications cancelled before this stage are refundable but will incur a charge (see Cancelled Applications p.12).

Application Type	Description	Charge
<b>New water main requisition</b>	We'll send you a detailed breakdown of the charges for your chosen lay option. If you haven't yet decided, we'll send you the charges for all options allowing you to make an informed decision on how you wish to proceed	£1,801.34
<b>Diversion of a water asset (please refer to appendix 1)</b>	<b>Budget estimate:</b> we'll send you an indicative cost estimate for the diversion works. If you wish to proceed to construction or require a drawing showing the proposed diversion route, you will need to upgrade to a full cost estimate	£852.53
	<b>Full cost estimate:</b> we'll send you a drawing showing the proposed diversion route and an estimate which needs to be accepted and paid to progress to construction. If you have a budget application, you'll only be required to pay the difference to upgrade to a full cost estimate	£2,003.57
<b>Water service connection 25/32mm</b>	<b>Up to 3 connections:</b> We'll send you a detailed breakdown of the charges for up to three 25/32mm water service connections. This includes connections needed for a temporary supply, a supply for agricultural use and for the splitting of a shared supply	£162.50
	<b>Additional connections:</b> Where more than three connections are required, this additional fee will be incurred to provide a quote for up to three more connections	£98.71
<b>Large diameter water service connection</b>	<b>One connection:</b> We'll send you a detailed breakdown of the charges for a 50mm+ water service connection	£342.95
	<b>Additional connections:</b> Where more than one connection is required, this additional fee will be incurred to provide a quote for an additional large diameter connection.	£113.18
<b>Requote for a water service connection 25mm-32mm</b>	When there is a change to the specification of your development we'll need to send you a revised quote and an updated agreement and a requote charge will be applicable	£51.92

<b>Requote for a water service connection 50mm+</b>	When there is a change to the specification of your development we'll need to send you a revised quote and an updated agreement and a requote charge will be applicable	£143.17
<b>Refresh quote for a water main</b>	When a quote has expired but there's been no change to the design layout, you'll need to make a requote payment, so we can send you updated charges and an amended agreement based on the revalidation of the original design	£839.62
<b>Refresh quote for a water service connection onto a new main</b>	We'll send you updated charges for a 25/32mm water service connection	£4.00 (Per Connection)
<b>Water mains/water diversions quote for redesign</b>	If you present us with new information or if your requirements, specification, or design changes from the original agreement, we'll need to make changes to the design and provide an updated offer. We'll send you updated charges and an amended agreement based on the redesign	£839.62

**Please note that if your application has simply expired, you'll need to apply again and make a new application fee payment,** in order to receive an updated agreement.

Our self-lay offer does not include design for contestable works. Instead, a bespoke charge will be applied for the design of contestable works which will vary depending on the complexity and length of the diversions.

## Application charges associated with wastewater

When you've completed the relevant application form, please send it to us with the appropriate application charge, as shown in the tables below, along with any supporting information.

Application Type	Description	Charge
<b>Sewer requisition</b>	We'll complete a preliminary investigation and design and send you a quote for the bespoke charges	£3,335.75
<b>Diversion of a sewer asset (please refer to appendix 1)</b>	We will complete an assessment of your proposals and advise if a diversion can be undertaken. We'll also advise if you can complete the diversion under a self-lay agreement. If your diversion can be completed in this manner, we'll assess your proposed design and provide comments. Once any necessary design amendments have been completed, we'll send you a technical compliance and advice of fees.	£655.19
	Should your diversion be defined as high risk (definitions on our website within sewer diversion guidance) and need to be completed by Severn Trent directly, we will complete a desktop review and provide an offer which details our costs and timescales to further develop the design and produce a construction cost. (Note: this would be a further charge to the non-high risk cost above if not submitted directly)	£3,335.75
<b>Sewer adoption (S104)</b>	We'll assess your proposed design and provide comments. Once any necessary design amendments have been completed, we'll send you a technical compliance and the your bespoke charges.	£714.03



	Technical assessment – structural checks. If any of your design requires reviewing by a structural engineer, we'll send you a bespoke quote.	Bespoke
<b>Predesign strategic discussion</b>	This is an early-stage application to agree a site design in principle and tackle any complex issues before submitting your S104 application.	£151.45
<b>Sewer connection</b>	<b>Connection to a public sewer (in the public highway):</b> Approval for 1 length of lateral drain/ sewer (15 metres). Two inspections during normal working hours (Monday to Friday 9am to 5pm)	£515.28
	<b>Connection to a public sewer (not in the public highway):</b> Two inspections during normal working hours (Monday to Friday 9am to 5pm)	£279.83
	<b>Indirect connection to a private drain or sewer that outfalls to the Severn Trent sewerage network</b> Requires Severn Trent acceptance for receiving increased flows. Building Control Officer to inspect not Severn Trent.	£119.91
	<b>Highway gully connection</b> Approval or acceptance for Severn Trent to receive the flow into our network. Two inspections during normal working hours (Monday to Friday 9am to 5pm)	£165.95
	There may be occasions where a robust risk assessment results in the need for Severn Trent to undertake the works (S107). In this event charges will be determined on a case-by-case basis to recover all reasonably incurred costs.	Bespoke
<b>S102 existing sewer adoption</b>	We'll assess your enquiry and provide a response, detailing any concerns, and the bespoke charges to complete the adoption	£129.93
<b>Sewer connection – reapplying</b>	When an approval has expired or there has been a change in details and/or design, you'll need to send us another application form so that we can provide you with up to date costs	£146.53
<b>Requote for a sewer requisition or a high risk sewer diversion</b>	If a quote has expired and the works are still required, you'll need to request a requote and make the requote payment. The requote will be based on the applicable published charge at that point in time, and we'll provide you with up to date costs	£1,059.23

Please note that if your application has simply expired, you'll need to apply again and make a new application fee payment, in order to receive an updated agreement.

## Build over approvals

Build over	Description	Charge
<b>Build over (Sewer only)</b>	Self-certification	£69.16
	Build Over Agreement Class 1 – Up to and including 150mm diameter sewers	£180.96
	Build Over Agreement Class 2 – 225mm diameter sewers	£207.48

<b>Build over sewer inspection</b>	Sewer inspection within normal working hours Monday to Friday 9am – 5pm	£99.09
	Sewer inspection outside of normal working hours Monday to Friday before 9am and after 5pm	£144.83

We are unable to provide retrospective build over approvals, but we may be able to provide you with a statement about the sewer condition. To do so requires us to undertake several activities to determine if the asset is acceptable. Associated costs must be recovered by Severn Trent and therefore a fee is payable, as shown below:

<b>Sewer condition statement</b>	<b>Description</b>	<b>Charge</b>
<b>Sewer condition statement</b>	Class 1 – up to and including 150mm diameter sewers	£199.16
	Class 2 – 255mm diameter sewers	£228.28

Charges will be made for repairs for damage to our assets, where appropriate under section 174 of the Act, to whoever is responsible for damaging them. We will recover all costs incurred associated with investigation, administration, statutory noticing, repair and reinstatement of the asset. We will also recover any other costs we incur as a result of the damage.



## The infrastructure charge

Under the Water Industry Act (1991) and Ofwat's Charging Rules, water companies can recover the cost of work needed on their existing network to support new development. These costs are covered by infrastructure charges.

There are two charges:

- Water infrastructure charge
- Sewerage infrastructure charge

These charges fund non site-specific work on our network as a result of new connections to our existing water and sewer network. This includes works, amongst others, to provide or alter existing water mains, service reservoirs, sewers and pumping stations.

You can choose to defer payment until your connection is made, in line with the Connection Charging Rules.

When we provide the water supply but not the wastewater services, we are required to recover wastewater infrastructure charges on behalf of other statutory undertakers. Please check the relevant undertaker's website for their specific charges.

### Infrastructure charges for NAV new connections

The NAV will be liable for all water and wastewater infrastructure charges in relation to newly connected properties in their area regardless of whether one or both services is provided by them to the end customer.

## How we calculate our infrastructure charges for household properties

We charge infrastructure charges per property connected; there is one charge for water and one for sewerage.

We calculate the infrastructure charge by:

- Taking the total forecast cost of the developer driven non site-specific network reinforcement investment activity over the 5-year period between 2026–27 and 2030–31.
- Adjusting the forecast cost for any over or under recovery of infrastructure charges in prior year.
- Dividing the adjusted forecast cost by the total forecast volume of new properties connected over the same 5-year period.

This then provides a per property infrastructure charge. Our infrastructure charges are universal; all developer customers paying infrastructure charges pay the same rate across our region. We don't apply a zonal charge based upon the location of a connection.

## How we calculate our infrastructure charges for non-household properties

Non-household connections for domestic use are those that include everyday household fittings like those shown in the Loading Units table below. If your new connection is for a commercial process, we'll charge the actual off-site costs needed to make the supply available.

If your non-household connection is for domestic use and the service pipe is no larger than 25mm external diameter, you will be charged the standard infrastructure charge on page 20.

If your non-household connection is for domestic use and any part of the service pipe is larger than 25mm external diameter, the infrastructure charge will be increased by applying a multiplier to the

standard infrastructure charge. We calculate the multiplier by comparing the water demand of your fittings to that of a standard home.

The multiplier is calculated as follows:

1. The total loading units of all water fittings to be installed at the premises calculated from the table below
2. Divided by the loading units for a standard domestic premises (24 loading units)

Example

1. Total loading units at the premises: 36
2. Standard domestic loading units: 24

Multiplier =  $36 \div 24 = 1.5$

The applicable infrastructure charge would therefore be 1.5 times the standard charge.

A minimum of one standard infrastructure charge is applied to each property/premise.

### Loading Units Table

The loading units below are based on table 20 of BS6700 which covers the design of services supplying water for domestic use within premises:

Water fitting	Loading units
WC flushing cistern	2
Wash basin in a house	1.5
Wash basin elsewhere	3
Bath (tap nominal size up to 20mm)	10
Bath (tap nominal size larger than 20mm)	22
Shower	3
Sink (tap nominal size up to 15mm)	3
Sink (tap nominal size larger than 15mm)	5
Spray tap	0.5
Bidet	1.5
Domestic appliance – see 3 <sup>rd</sup> note below (subject to a minimum of six loading units per house)	3
Communal or commercial appliance	10
Any other water fitting or outlet (including a tap but excluding a urinal or water softener)	3

Notes to be read with the Table:

1. Reference to any fitting includes reference to any plumbing, outlet, dedicated space or planning or other provision for that fitting
2. "Bath" includes a whirlpool bath and a jacuzzi
3. "Domestic appliance" means an appliance (including a dishwasher, a washing machine and waste disposal unit) in a House and "communal or commercial appliance" means an appliance (including a dishwasher, a washing machine and a waste disposal unit) elsewhere than in a House (including in communal facilities)

Important points about infrastructure charge calculations:

- Charges for community or similar housing, where the water supply is provided through a 'common supply pipe' and charges for water services will be paid under a 'common billing agreement', are calculated using the multiplier.

- In community housing developments, a minimum of six loading units is included in the calculation for each premises. However, this does not apply where there is insufficient space for a washing machine or dishwasher to be installed.
- The charge is calculated using an assessment of proposed fittings to be installed, this will be amended for any variation in actual fittings installed.
- Any allowance or planning for future provision of fittings in the premises is taken into account when assessing the loading units.

Infrastructure charge	Charge Per Property
Water infrastructure charge	£385.36
Sewerage infrastructure charge	£499.62

## Infrastructure credits for redeveloped sites

If a site is redeveloped and had properties connected to the water or sewer network within the last 5 years, you may be eligible for infrastructure credits.

Credits are only available where there was measurable demand on the network, shown by Severn Trent having billed the property (domestic or non-household) within the past 5 years.

### Single Domestic Property:

- If the previous connection is removed, you'll receive one infrastructure credit.
- If the connection is retained, no credit applies, and charges will be due for any additional new premises.

### Non-Household Property:

- Credits are based on the property's average annual water use compared to a typical household.
- At least one credit is given if the previous connection is removed.

Credits offset infrastructure charges. If credits exceed charges, any remaining balance can be used for future developments on the same site, provided the new application is made within 5 years of the last measurable demand.



# Environmental Components & Environmental Incentives

From April 2025, water companies in England adopted a new common framework for Environmental Incentives. This follows changes to Ofwat's Charging Rules for New Connection services, aiming to improve water efficiency and promote sustainable drainage in new developments, particularly new homes.

#### What does this mean for you?

The great news is that every developer customer building new homes can benefit from a financial reward when building to the scheme's sustainability criteria.

#### How it works:

- A small **Environmental Component charge** will apply to every new water and wastewater connection
- This charge funds the Environmental Incentive scheme and is used for no other purpose
- Separate charges apply for water and wastewater connections
- If you build to our qualifying criteria, you can **apply for financial incentives** while helping protect the environment

## Environmental Components

An Environmental Component charge is applied to every new water and wastewater connection.

Environmental Component	Charge Per Property
Water environmental component	£48.65
Waste environmental component	£43.11

## Environmental Incentives

The nature of what we do as a company means we have an important role to play in protecting and sustaining water as a natural resource for future generations. We want to encourage better water efficiency in the home. We also wish to aid the prevention of flooding. Our Environmental Incentive scheme aims to support this.

As a home builder, you could receive a financial incentive by building new homes to specified qualifying criteria. This year, we are offering incentives for:

- Water usage of 100 litres per person per day or less
- Water usage of 90 litres per person per day or less
- Water usage of 85 litres per person per day or less
- Rain gardens
- Permeable surfaces

All our Environmental Incentives apply to household premises. From 1<sup>st</sup> April '26, non-household premises with domestic usage only can apply for our 100 litre per person per day water efficiency incentive.

**Our Environmental Incentives are reviewed annually and will be paid at the prevailing year's rate, based on the date you apply for the incentive.**

## Applying for Environmental Incentives

### How do I apply?

To apply for any of our incentives you must send us a completed Environmental Incentive application form along with the appropriate evidence. The Environmental Incentive application form and how to submit it can be found [here](#).

Please note that the application form and process for Environmental Incentives is separate from your application for a new connection.

### When do I apply?

- **Water Efficiency Incentives must be applied for within 12 weeks** of your water service connection date.
- **Flooding Prevention Incentives must be applied for within 26 weeks** of your water service connection date.

To apply for any of our incentives:

- Send us a completed environmental incentive application form along with the appropriate evidence within 12 weeks (water efficiency) / 26 weeks (flooding prevention) of your water service connection date.
- The property must be unoccupied and remain in your ownership to enable us to complete a physical audit.
- All fittings, rain gardens and/or permeable surfaces must be installed before applying.
- All Environmental Incentives will be paid at the prevailing year's rate, based on the date you apply for the incentive.
- Any applications received more than 12 weeks (water efficiency) / 26 weeks (flooding prevention) after your water service connection date may be considered on a case-by-case basis.
- You can apply for more than one incentive on each application form.

We will undertake both desktop and physical audits to ensure compliance. We cannot audit occupied properties therefore the timeliness of your application is critical. The property must be unoccupied and remain in your ownership.

We will conduct physical audits on properties to check compliance. If your property is found to be non-compliant you will not receive the incentive payment and you may be subject to a financial penalty.

**By applying, you agree to Severn Trent auditing the relevant properties to validate compliance with the qualifying criteria.**

## Our Water Efficiency Incentives

### What incentive payments can I get?

We're offering incentives for three levels of water efficiency. Depending on the criteria achieved, you could get a payment of **up to £350 per property**.

If you can show us that you have built a premises with domestic usage to no more than 100 litres per person per day you can apply for one of the following incentive payments:

Environmental Incentive	Description	Incentive Per Property
Water Efficiency	Property built to maximum usage of 100 litres per person per day evidenced by completed fittings table	£250.00
	Property built to maximum usage of 90 litres per person per day evidenced by completed fittings table	£300.00
	Property built to maximum usage of 85 litres per person per day evidenced by completed fittings table	£350.00

Note: Non-Household premises with domestic usage can only qualify for our 100 per person per day incentive.

For a new home to qualify for a water efficiency incentive:

- All fittings installed must be within the maximum capacity/flow rate listed below. Where more than one of each fitting is used, the highest maximum capacity/flow rate measured at 3 bar pressure must be entered in the table.
- The premises must have a WC, shower or bath, basin taps and sink taps.
- The efficiency of baths/showers, dishwashers and washing machines will only be assessed if installed by the developer.
- You must provide the data sheet for each fitting installed.

For a non-household premise with domestic only usage to qualify for a water efficiency incentive:

- All fittings installed must be within the maximum capacity/flow rate listed below. Where more than one of each fitting is used, the highest maximum capacity/flow rate measured at 3 bar pressure must be entered in the table.
- The efficiency of baths/showers, dishwashers and washing machines will only be assessed if installed by the developer.
- You must provide the data sheet for each fitting installed.

Please note, we will only accept flow regulators that form part of the original Regulation 4 product approval certificate and can be evidenced via the associated data sheet.

#### Accepted maximum capacity/flow rates:

100 litres per person per day – common environmental incentive	
Water fittings	Maximum consumption (equal to or less than the following values)
WC	≤ 4 / 2.6 litres dual flush
Shower	≤ 7 l/min
Bath	≤ 170 litres
Basin taps	≤ 5 l/min
Sink taps	≤ 6 l/min
Dishwasher	≤ 1.0 l/place setting
Washing machine	≤ 6 l/kilogram

90 litres per person per day – bespoke environmental incentive	
Water fittings	Maximum consumption (equal to or less than the following values)
WC	≤ 4 / 2.6 litres dual flush
Shower	≤ 5 l/min
Bath	≤ 170 litres
Basin taps	≤ 4 l/min
Sink taps	≤ 5 l/min
Dishwasher	≤ 1.0 l/place setting
Washing machine	≤ 6 l/kilogram

85 litres per person per day – bespoke environmental incentive	
Water fittings	Maximum consumption (equal to or less than the following values)
WC	≤ 2 litre pressure assisted
Shower	≤ 5 l/min
Bath	≤ 170 litres
Basin taps	≤ 3.5 l/min
Sink taps	≤ 5 l/min
Dishwasher	≤ 1.0 l/place setting
Washing machine	≤ 6 l/kilogram

To apply for a water efficiency incentive, you will need to send us:

- a completed application form along with the water incentive template (found [here](#))
- a completed fittings table appropriate to the incentive you are applying for that demonstrates the fittings do not exceed the maximum capacity/flow rates for each fitting installed measured at 3 bar pressure
- the data sheets for each fitting installed

## Our Flooding Prevention Incentives

### What payments can I get?

We are offering three incentives to help prevent flooding, these are:

- the installation of a rain garden – **£100 per property**
- permeable surfaces for driveways or parking spaces that attenuate – **£150 per property**
- permeable surfaces for driveways or parking spaces that infiltrate and do not connect to our network – **£275 per property**

### The Rain Garden Incentive

The installation of a rain garden can help prevent flooding. Rain gardens absorb rainwater run-off after heavy downpours and reduce peak flows to local watercourses.

In simple terms, a rain garden is a shallow area or dip in the ground that collects run-off from roofs and other hard surfaces. During storms, water fills the rain garden and then gradually drains into the ground. It is planted with species that can tolerate waterlogging for up to 48 hours, creating an attractive, low-maintenance, and wildlife-friendly space.

### What incentive payment can I get?

We're offering an incentive of **£100 per property** for the installation of a rain garden

You can apply for our rain garden incentive where the planning authority has agreed to a surface water drainage solution that involves a connection to a Severn Trent public sewer. Where the planning authority has dictated a surface water outfall via infiltration or to a watercourse, you are unable to claim the incentive as there will be no additional benefit above your mandatory planning requirements on the Severn Trent network.

Your rain garden must have:

- a minimum surface area equal to 20% of the property's main roof that drains into the rain garden
- a minimum depth of 15cm at its shallowest point
- been installed over and above any planning requirements.

Environmental Incentive	Incentive Per Property
<b>Rain garden</b> (Minimum surface area equal to 20% of the main roof area)	£100.00

### How do I apply?

When applying for the rain garden incentive, you will need to send us:

- a completed application form (found [here](#)),
- the specification of rain garden installed, including area of main roof and area and depth of rain garden,

- a photograph of the surrounding area and of the rain garden installed that clearly shows the drain from the main roof to the rain garden, and
- your planning approval notice, that clearly details the approved surface water strategy agreed by the planning authority

Please note that to qualify for this incentive the roof that drains into the rain garden must be the property's main roof.

Incentive payments for qualifying apartments/flats will be 1 payment for each top floor domestic property, e.g. a block of 20 apartments with 4 domestic apartments on the top floor will receive 4 times the incentive payment, subject to being compliant with the qualifying criteria.

## The Permeable Surface Incentive

Installation of permeable surfaces for parking areas and driveways, in place of traditional surfaces, can help prevent flooding by reducing peak flows to watercourses. They can also help reduce the effects of pollution in run-off on the environment.

### What payments can I get?

If you can show us that you have installed a permeable surface to the whole driveway or parking space that allows rainwater to infiltrate into the ground, does not connect to our network and is not a planning requirement you could get an **incentive payment of £275**.

If you have installed a permeable surface to the whole driveway or parking space that allows rainwater to attenuate, slowing the release to our network and is not a planning requirement you could get an **incentive payment of £150**.

Environmental Incentive	Description	Incentive Per Property
Permeable Surface	Permeable surface driveway/parking space that attenuates and releases to our network	£150.00
	Permeable surface driveway/parking space that infiltrates and does not connect to our network	£275.00

The permeable surface incentive is paid per qualifying property. Driveways will receive one incentive payment regardless of the number of vehicles it can hold. Flats/apartments will receive payments for the number of properties with an outdoor parking space, e.g. a block of 20 apartments with 10 parking spaces will receive 10 incentive payments subject to being compliant with the qualifying criteria. Payments are limited to one per flat/apartment regardless of the number of parking spaces allocated to the flat/apartment.

Accepted permeable surfaces include but are not limited to:

- Porous concrete block paving or porous concrete
- Loose gravel
- Porous asphalt

### How do I apply?

When applying for the permeable surface incentive, you will need to send us:

- a completed application form (found [here](#)),
- the specification of the permeable surface to be installed,
- a photograph of the surrounding area and of the permeable surface installed, and
- your planning approval notice, that clearly details the approved surface water strategy agreed by the planning authority.



Flooding prevention incentives only apply when the sewer connections are located in the Severn Trent region and are only available to new homes.

## Compliance

We will complete a desktop audit of all applications. If your application does not pass the desktop audit we will contact you and give you the opportunity to rectify your application. We will only do this once, failing a second desktop audit for the same property will mean that your application has not been successful, and no incentive payment will be made.

If your application passes the desktop audit, we are likely to choose to carry out a physical audit of your property. Physical audits could be an in person face-to-face, self-serve video and images of site or video call. Please note that any audit for Environmental Incentives should not be confused with a water regulations inspection.

You must give us **15 working days** after making your Environmental Incentive application to allow us to physically audit your property, should we choose to. We cannot audit occupied properties therefore, if you wish to benefit from an incentive your property must be unoccupied for this period and remain in your ownership. If we are prevented from entering the property, or you do not give us 15 working days to complete the audit, your application will be cancelled.

By applying for an incentive, you are agreeing to Severn Trent auditing all relevant properties to validate compliance with the qualifying criteria.

If your property fails the physical audit, we will not pay the incentive for that property, but we will give you the opportunity to defer audits for any other properties on your site that have been scheduled for the same visit. If you chose to do this, we will charge a re-audit fee. Incentives will not be paid for properties that fail audits. Any subsequent failures on site will be subject to a financial penalty.

Environmental Incentive Penalties for Non-Compliance		Charge Per Visit
Re-Audit Fee		£71.83
Second visit to site for audits following customer deferral		
Second failure on the same site		
If two properties on your site fail the physical audit, no incentive will be paid and you will charged a penalty		£143.66
Third failure on the same site		
If three properties on your site fail the physical audit, no incentive will be paid and you will charged a penalty		£215.49

We reserve the right to prevent developers/sites applying for incentives where there is consistent non-compliance.

## Payment of Environmental Incentives

When we are satisfied that the correct evidence of compliance has been provided or we have completed an audit demonstrating compliance, we will make payment within 30 days.

# **Service Connections and associated charges**

All charges shown exclude VAT. Where applicable, VAT will be added at the appropriate rate.

## Water service connection charges

The charge for a new water service connection is made up of several elements and is specific to each connection.

These are charges for work in accordance with the duties (or rights) under section 45(1) (connection with Water Main) and section 46(1) (ancillary works for purposes of making a domestic connection) of the Water Industry Act 1991.

All service connection work is contestable activity therefore the connection work doesn't have to be done by Severn Trent. The work can be completed by a third-party contractor working on behalf of the developer, such as an accredited Self Lay Provider.

Additional meter costs may apply, these can be found in the Meter section from page 36.

Where site specific, non-standard items are required, that are not included in the published charges, these will be charged at cost on a bespoke basis, for example, if traffic calming is required.

## Charges for a water service connection

We have fixed charges for water service connections from 0-5 and 5-12 metres in length and an additional per linear meter charge for any connections over 12 metres.

Costs vary depending on whether the excavation is carried out by Severn Trent (the Water Company) or by others:

- **Excavation by others:** Any work undertaken by someone other than the Water Company in excavation, backfilling or reinstatement
- **Excavation by Water Company:** Any work undertaken by the Water Company (or an agent acting on their behalf) in excavation, backfilling or reinstatement.

The total charges shown in the tables below include the following elements:

- Laying the physical pipework
- Making the connection, and
- Installing and providing the physical meter

How these elements contribute to the total connection charge can be found within the worked examples from page 66.

## Excavation by others

Type of connection	Length of supply (m)	Excavation by others (£)
Single supply (up to 32mm)	0 – 5	£381.85
	>5 – 12	£385.67
Shared trench x2 (up to 32mm)	0 – 5	£763.71
	>5 – 12	£771.35
Shared trench x3 (up to 32mm)	0 – 5	£1,145.56
	>5 – 12	£1,157.02
4 Port Manifold (up to 63mm)	0 – 5	£2,345.45
	>5 – 12	£2,377.90
6 Port Manifold (up to 63mm)	0 – 5	£3,026.08
	>5 – 12	£3,058.53
Large Diameter Connections >50mm up to 180mm	0 – 5	£1,679.72
	>5 – 12	£1,812.22

Linear Meter (up to 63mm)	£16.70
Linear Meter (>63mm up to 180mm)	£52.27

## Excavation by Water Company

Type of connection	Length of supply (m)	Excavate & Lay by Water Company (£)
Single supply (up to 32mm)	0 – 2	£2,367.16
	2 – 5	£2,581.99
	>5 – 12	£3,663.65
Shared trench x2 (up to 32mm)	0 – 2	£3,167.45
	2 – 5	£3,484.02
	>5 – 12	£4,468.80
Shared trench x3 (up to 32mm)	0 – 2	£4,255.40
	2 – 5	£4,573.70
	>5 – 12	£5,273.95
4 Port Manifold (up to 63mm)	0 – 2	£5,008.78
	2 – 5	£5,270.08
	>5 – 12	£6,408.22
6 Port Manifold (up to 63mm)	0 – 2	£6,127.97
	2 – 5	£6,389.27
	>5 – 12	£7,562.88
Large Diameter Connections >50mm up to 180mm	0 – 2	£3,369.26
	2 – 5	£3,651.84
	>5 – 12	£4,440.58
Linear Meter (up to 63mm)		£214.71
Linear Meter (>63mm up to 180mm)		£286.90
Large Diameter Connection >180mm		Bespoke

## Barrier pipe

If you need to lay your service pipe in a protective material (a barrier pipe), we'll complete the connection to our water main in a similar material. Barrier pipe must be used in contaminated ground, or in locations where future contamination may occur from proposed industrial units etc. to protect the water supply and our customers.

We have fixed charges for water service connections inclusive of barrier pipe from 0-5 and 5-12 metres in length and, an additional per linear meter charge for any connections over 12 metres.

## Excavation by others – inclusive of barrier pipe

Type of connection	Length of supply (m)	Excavation by others (£)
Single supply (up to 32mm)	0 – 5	£430.73
	>5 – 12	£455.53
Shared trench x2 (up to 32mm)	0 – 5	£860.35
	>5 – 12	£899.92
Shared trench x3 (up to 32mm)	0 – 5	£1,290.52
	>5 – 12	£1,349.87
4 Port Manifold (up to 63mm)	0 – 5	N/A
	>5 – 12	N/A
6 Port Manifold (up to 63mm)	0 – 5	N/A
	>5 – 12	N/A
		£2,378.62

Large Diameter Connections >50mm up to 180mm	>5 - 12	£2,558.62
Linear Meter (up to 63mm)		£35.15
Linear Meter (>63mm up to 180mm)		£70.01

## Excavation by Water Company – inclusive of barrier pipe

Type of connection	Length of supply (m)	Excavate & Lay by Water Company (£)
Single supply (up to 32mm)	0 – 2	£2,415.92
	2 – 5	£2,736.68
	>5 – 12	£3,727.93
Shared trench x2 (up to 32mm)	0 – 2	£3,264.97
	2 – 5	£3,593.40
	>5 – 12	£4,597.36
Shared trench x3 (up to 32mm)	0 – 2	£4,401.67
	2 – 5	£4,737.77
	>5 – 12	£5,466.80
4 Port Manifold (up to 63mm)	0 – 5	N/A
	>5 – 12	N/A
6 Port Manifold (up to 63mm)	0 – 5	N/A
	>5 – 12	N/A
Large Diameter Connections >50mm up to 180mm	0 – 2	£4,053.09
	2 – 5	£4,350.73
	>5 – 12	£5,378.88
Linear Meter (up to 63mm)		£221.31
Linear Meter (>63mm up to 180mm)		£294.29

## Shared trench

If more than three connections are required in a shared trench, we will assess your needs and provide a bespoke charge.

## Domestic sprinkler supplies

A charge applies to a direct feed sprinkler system where we're making one connection to the main and branching off the supply to the sprinkler feed. The charge is **per connection**:

Domestic sprinkler supplies	Charge Per Connection
Fire branch connection	£229.20
Fire branch connection – barrier pipe	£381.11

## Large diameter connection account set up

Where multiple properties are supplied from a single large diameter water connection, there is a need to update each individual property record on our systems. Therefore, there is a **per property** account set up charge.

Large diameter connection account set up	Charge Per Property
Account set up for more than one property	£20.02

## Traffic management / Highway charges

When the connection for a water service is in the highway we sometimes have to close all, or part, of a road while we undertake the work. We have a number of fixed charges depending on how we safely manage the traffic which allows for any site-specific designs that may be required.

### Traffic lights:

Type of traffic lights: standard for up to 3 consecutive days	Charge Per set up
Two-way traffic lights	£444.13
Two-way traffic lights with manual traffic control	£1,519.29
Three-way traffic lights	£541.58
Three-way traffic lights with manual traffic control	£1,616.74
Four-way traffic lights	£639.04
Four-way traffic lights with manual traffic control	£1,714.20

### Traffic lights required for more than 3 consecutive days

Any additional charges incurred for traffic management that is required for longer than three consecutive days will be charged on a bespoke basis.

### Closing a road or lane:

Type of road closure: standard for up to 3 days	Charge Per set up
Standard full road closure where the speed limit is <b>up to and including 40mph</b> and not exceeding 1 mile diversion route	£524.62
Standard full road closure where the speed limit is <b>over 40mph</b> and not exceeding 1 mile diversion route	£773.30
Standard minor lane closure on a single carriageway where the speed limit is <b>up to and including 40mph</b>	£723.91
Standard major lane closure on a single carriageway where the speed limit is <b>over 40mph</b>	£2,933.15

### Closing a road or lane over the standard 3 days or a diversion route greater than 1 mile:

Depending on the design of your site you may require a road or lane closure for longer than three consecutive days or a diversion route which is greater than one mile. These scenarios will be charged on a bespoke basis dependant on your site-specific requirements.

CAD drawings	Charge Per drawing
On occasion we have to provide the Highway Authority with a CAD drawing for traffic management set up	£111.65

### Other Highway Authority charges:

It is a legal requirement when carrying out connection work in the public highway to apply to the Local Council/Authority for a permit to work. Further applications are required if parking bays need to be suspended or where major traffic management is required in which case a 'temporary traffic order' will be applied for.

**These charges are set locally by each Council, and not by Severn Trent.** The appropriate charge will be added to your quote, but a temporary traffic order is generally between £500 and £3,500.

Highway Authority charge	Charge Per job
Temporary traffic order	Actual charge
Permit	Actual charge
Parking bay suspension	Actual charge



### Moving a bus stop, a pedestrian crossing or street lamp

Sometimes we have to move a bus stop, a pedestrian crossing or support a street lamp when we complete the work for a water service connection.

Type of traffic management	Charge
Work to relocate a bus stop	£154.05
Work to relocate a pedestrian crossing	£736.93
Work to support a street lamp	Bespoke

### Completing a water service connection at night, during the weekend or on a bank holiday

Due to Highway Authority constraints we're sometimes required to complete the work for a water service connection after 8pm, or on a weekend or bank holiday.

Night, Sunday or Bank Holiday	Charge Per visit
Connection work completed after 8pm	£2,997.80
Connection work completed on a Sunday or on a Bank Holiday	£1,838.21

### Same day reinstatements

There are occasions where the Local Authority requires that we complete the connection, backfill and reinstatement on the same day. On these occasions an additional charge will apply to your connection, as shown below:

Same day reinstatements	Charge Per visit
Reinstatement required on the same day of connection	£369.28

### Split reinstatements

If a full road closure isn't possible and one side of the road must remain open, we'll need to complete the work in two phases. While the service connection charge will cover the entire reinstatement across the road, there will be an additional charge for returning to the site to complete the second phase.

Return visit for split reinstatements	Charge Per visit
Return visit for split reinstatements	£350.00

### Impact protection vehicle

While our road closure charges include an Impact Protection Vehicle when required, there may be instances where an Impact Protection Vehicle is necessary as a standalone charge.

Impact protection vehicle	Charge Per vehicle
Impact Protection Vehicle - up to 3 consecutive days	£1,852.36
Impact Protection Vehicle - 4 consecutive days or more	Bespoke

### Surface reinstatements

Sometimes, the excavation for your connection may be on a recently resurfaced public highway. In these cases, we're legally required under Section 58 of the Water Industry Act to reinstate the surface in line with local council standards. We'll endeavour to let you know at the quotation stage if this applies. Any additional charge will be based on the council's requirements, and we'll provide a bespoke quote accordingly.

Local authority requirements	Charge Per job
S58 reinstatements	Bespoke

## Digging a trial hole

Sometimes we have to excavate a trial hole to understand what pipework and other apparatus is already in the ground to see if we can safely complete your water connection where we'd like to.

The charge is based on per m<sup>3</sup> of ground excavated:

Trial hole – This is the charge per m <sup>3</sup> of ground excavated	Charge Per m <sup>3</sup>
Trial hole – unmade	£155.06
Trial hole – footpath	£288.87
Trial hole – carriageway type 3/4	£421.43
Trial hole – carriageway type 1/2	£616.65

## Metal boundary box

Depending on where a boundary box is installed there may be a need to use a metal boundary box. This is most common when the boundary box is installed in the highway.

Metal Boundary box lid	Charge Per lid
To supply and install a boundary box lid	£14.78

## Water for construction

If you're building new properties on a development site, you'll often need water for construction (building water), e.g. to mix concrete, plaster, washing down, etc. Unless you have a temporary metered supply (i.e. a hired standpipe) or are utilising an existing metered supply, you'll need to pay a fixed charge for water for construction.

Water for construction is charged per property when:

1. The water service connection is a 25mm-32mm for any newly built household property.
2. The water service connection is a large diameter connection for a newly built household property.
3. The water service connection is on any non-household property with a 25mm+ connection.

Water for construction	Charge Per property
Household property and non-household property with a 25mm-32mm connection	£140.71
Non-household property with a 25mm+ connection. This represents m <sup>3</sup> of construction not m <sup>3</sup> storage	£2.5503

## Miscellaneous charges

We have a number of miscellaneous charges for water service connections in accordance with the duties (or rights) under section 45(1) (connection with Water Main) and section 46(1) (ancillary works for purposes of making a domestic connection) of the Water Industry Act 1991.

Water regulation re-inspection fee	Charge Per visit
We'll charge a re-inspection fee each time we arrive on site to do a water regulations inspection and the site isn't ready.	£71.83

Aborted visit	Charge Per visit/item
We'll charge an aborted visit charge each time we arrive on site and the site isn't ready for a water service connection to be completed	£536.99
Additional costs incurred, for example traffic management, will be charged in addition to the aborted visit charge	Actual cost

Common Billing Agreement	Charge Per agreement
To prepare and issue a Common Billing Agreement that will be registered with the local council and ensures that when a property is substantially altered, to become multiple properties, each property has its own individual meter and billing account.	£196.86

## Ensuring accurate and timely account set up

Once a new connection to our network takes place it is essential that new occupant details are provided to us, along with accurate meter details. Where these details are not provided, we will levy charges for the associated services provided to that property, for example: the fresh water supply as measured by the meter, wastewater charges and standing charges.

# Meter Charges

**All charges shown exclude VAT. Where applicable, VAT will be added at the appropriate rate.**

New water service connection work includes the installation of a meter, either externally into a boundary box or internally in a block of flats, and the collection of the meter details (often called the commissioning of the meter) that enables the billing account for the property to be set up.

The installation of meters is a contestable activity and can be completed by any provider. The contestability of meter commissioning is dependent on meter type and meter location.

For a service connection and meter fit that is not being completed by Severn Trent, there is a charge for delivering meters to the site. The charge is per 50 meters delivered. If a meter is misplaced once delivered to site you can request a new one, but you'll be charged for the lost meter and the additional meter delivery.

Setting up of the billing account is a non-contestable activity and therefore can only be completed by Severn Trent.

**The charges below apply when a meter is installed and commissioned as a standalone activity. If the meter is installed during a standard single water service connection, there's no extra cost.**

Meter type	Charge Per meter/delivery
Install and/or commission of an external meter in the Boundary Box at the point of connection, connected by others – 1 <sup>st</sup> unit	£51.75
Install and/or commission of an external meter in the Boundary Box at the point of connection, connected by others <b>at the same location and on the same visit</b> – additional unit	£25.87
Install and/or commission external meter including radio – 1st unit	£116.44
Install and/or commission external meter including radio <b>at the same location and on the same visit</b> – additional units	£90.57
Commission a manifold meter that has been fitted by a customer in an internal value unit or meter manifold internally – 1st unit	£86.25
Commission a manifold meter that has been fitted by a customer in an internal value unit or meter manifold internally <b>at the same location and on the same visit</b> – additional units	£60.38
Commission a traditional in line meter that has been fitted by a customer – 1st unit	£107.82
Commission a traditional in line meter that has been fitted by a customer <b>at the same location and on the same visit</b> – additional units	£81.94
Provide and install a Pulse Meter Unit <40mm	£64.70
Provide and install a Pulse Meter Unit >40mm	£194.08
Meter delivery with a 50 meter delivery limit (in addition to the appropriate install and commission charges above)	£122.24
Install and/or commission external meter including radio with meter chamber	£575.49

# **Mains Requisitions and associated charges**

All charges shown exclude VAT. Where applicable, VAT will be added at the appropriate rate.

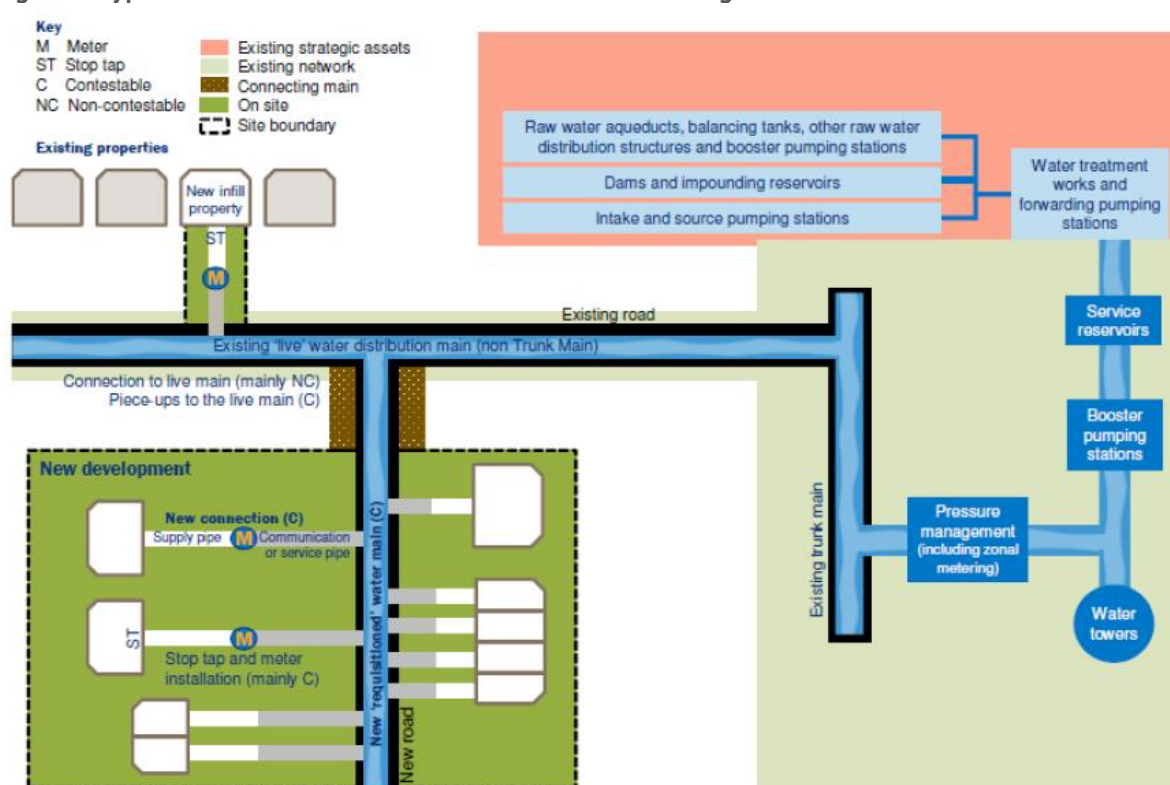
## Site specific charges – water

Site specific charges are for the connection work to or on a development site. They may include the installation of a new water main, water booster station and other infrastructure needed to connect a new development. Where the works are contestable and carried out by a Self Lay Provider the SLP's charges are not included.

Site specific work is distinct from network reinforcement work which provides additional capacity because of new developments. Any network reinforcement work needed as a direct result of new domestic development is included in infrastructure charges, but water for industrial/non domestic use will be identified in the requisition quotation (along with any programme impact).

The below diagram (Figure 1) shows this in more detail; site specific works are those done within both the green shaded area and brown with white dots shaded area.

Figure 1 Typical connections work and the location of existing water assets



## On site mains requisition charge – water

The mains requisition charge is for site specific mains work on a development site. This is for the works within the site boundary and between the site boundary and the existing water main, including the actual connection to our existing network.

All requisition work will be charged at full cost using our menu of rates. The items used to make a reasonable estimate of your scheme's costs can be seen in the following sections.

## Excavation requirements

Our mains charges are typically classified by the excavation requirements for laying the asset. An explanation of each requirement is shown in the table below:

Lay type	Definition
Excavation by Others	Means any work undertaken by someone other than the Water Company in excavation, backfilling or reinstatement
Excavation & lay by Water Company in unmade ground	Here the excavation and the laying of the pipework is completed in a surface such as a field, grass verge, a stone driveway, etc.
Excavation & lay by Water Company in the footpath	Here the excavation and the laying of the pipework is completed in the footpath
Excavation & lay by Water Company in a type 3/4 carriageway	Here the excavation and the laying of the pipework is completed in a type 3/4 carriageway
Excavation & lay by Water Company in a type 1/2 carriageway	Here the excavation and the laying of the pipework is completed in a type 1/2 carriageway

When we refer to Water Company this relates to Severn Trent.

## Pipework charges

The following charges are for the lengths of pipework. These charges are per metre.

Pipework size	Description	Charge Per meter
<b>Up to and including 63mm diameter</b>	Excavation by others	£21.00
	Excavation & lay by Water Company required in unmade ground	£52.27
	Excavation & lay by Water Company required in the footpath	£123.08
	Excavation & lay by Water Company required in a type 3/4 carriageway	£162.02
	Excavation & lay by Water Company required in a type 1/2 carriageway	£187.71
<b>Above 63mm up to and including 90mm diameter</b>	Excavation by others	£23.03
	Excavation & lay by Water Company required in unmade ground	£54.31
	Excavation & lay by Water Company required in the footpath	£125.22
	Excavation & lay by Water Company required in a type 3/4 carriageway	£164.25
	Excavation & lay by Water Company required in a type 1/2 carriageway	£189.90
<b>Above 90mm up to and including 125mm diameter</b>	Excavation by others	£27.35
	Excavation & lay by Water Company required in unmade ground	£58.62
	Excavation & lay by Water Company required in the footpath	£129.61
	Excavation & lay by Water Company required in a type 3/4 carriageway	£168.74
	Excavation & lay by Water Company required in a type 1/2 carriageway	£194.42
<b>Above 125mm up to and including 180mm diameter</b>	Excavation by others	£40.70
	Excavation & lay by Water Company required in unmade ground	£78.72



	Excavation & lay by Water Company required in the footpath	£152.66
	Excavation & lay by Water Company required in a type 3/4 carriageway	£198.86
	Excavation & lay by Water Company required in a type 1/2 carriageway	£204.88
<b>Above 180mm up to and including 200mm diameter</b>	Excavation by others	£51.94
	Excavation & lay by Water Company required in unmade ground	£95.19
	Excavation & lay by Water Company required in the footpath	£168.69
	Excavation & lay by Water Company required in a type 3/4 carriageway	£226.40
	Excavation & lay by Water Company required in a type 1/2 carriageway	£241.27
<b>Above 200mm up to and including 250mm diameter</b>	Excavation by others	£65.19
	Excavation & lay by Water Company required in unmade ground	£111.45
	Excavation & lay by Water Company required in the footpath	£185.22
	Excavation & lay by Water Company required in a type 3/4 carriageway	£253.28
	Excavation & lay by Water Company required in a type 1/2 carriageway	£269.40
<b>Above 250mm diameter</b>		Bespoke

## Barrier pipework charges

The following charges are for the lengths of barrier pipework. These charges are per metre.

Pipework size	Description	Charge Per meter
<b>Up to and including 125mm diameter</b>	Excavation by others	£70.98
	Excavation & lay by Water Company required in unmade ground	£92.15
	Excavation & lay by Water Company required in the footpath	£164.11
	Excavation & lay by Water Company required in a type 3/4 carriageway	£197.07
	Excavation & lay by Water Company required in a type 1/2 carriageway	£229.28
<b>Above 125mm up to and including 180mm diameter</b>	Excavation by others	£92.78
	Excavation & lay by Water Company required in unmade ground	£119.78
	Excavation & lay by Water Company required in the footpath	£199.18
	Excavation & lay by Water Company required in a type 3/4 carriageway	£238.27
	Excavation & lay by Water Company required in a type 1/2 carriageway	£298.64
<b>Above 180mm up to and including 200mm diameter</b>	Excavation by others	£160.05
	Excavation & lay by Water Company required in unmade ground	£198.20
	Excavation & lay by Water Company required in the footpath	£339.21

	Excavation & lay by Water Company required in a type 3/4 carriageway	£389.53
	Excavation & lay by Water Company required in a type 1/2 carriageway	£499.54
<b>Above 200mm up to and including 250mm diameter</b>	Excavation by others	£207.16
	Excavation & lay by Water Company required in unmade ground	£253.86
	Excavation & lay by Water Company required in the footpath	£399.14
	Excavation & lay by Water Company required in a type 3/4 carriageway	£455.72
	Excavation & lay by Water Company required in a type 1/2 carriageway	£546.08
<b>Above 250mm diameter</b>		Bespoke

## Charges for under pressure line stop

These are the charges for an under-pressure line stop to temporarily stop the water flow. The charges are per connection.

<b>Under pressure line stop</b>	<b>Charge Per connection</b>
Under pressure line stop 100mm	£4,585.85
Under pressure line stop 150mm	£6,032.86
Under pressure line stop 200mm	£8,905.28
Under pressure line stop up to 250mm	£13,744.63
Under pressure line stop above 250mm	Bespoke

## Charges for branch connections into an existing main

These are the charges for a branch connection between a new main and an existing main. The charges are per connection.

<b>Pipework size</b>	<b>Description</b>	<b>Charge Per connection</b>
<b>Up to and including 100mm</b>	Excavation by others	£1,647.03
	Excavation & lay by Water Company required in unmade ground	£2,202.66
	Excavation & lay by Water Company required in the footpath	£2,809.19
	Excavation & lay by Water Company required in a type 3/4 carriageway	£3,553.62
	Excavation & lay by Water Company required in a type 1/2 carriageway	£3,705.02
<b>Above 100mm up to and including 200mm</b>	Excavation by others	£2,402.03
	Excavation & lay by Water Company required in unmade ground	£3,124.40
	Excavation & lay by Water Company required in the footpath	£4,020.90
	Excavation & lay by Water Company required in a type 3/4 carriageway	£4,689.95
	Excavation & lay by Water Company required in a type 1/2 carriageway	£4,871.62
<b>Above 200mm up to and including 250mm</b>	Excavation by others	£4,115.51
	Excavation & lay by Water Company required in unmade ground	£5,152.76

	Excavation & lay by Water Company required in the footpath	£6,106.32
	Excavation & lay by Water Company required in a type 3/4 carriageway	£7,128.41
	Excavation & lay by Water Company required in a type 1/2 carriageway	£7,395.62
<b>Above 250mm diameter</b>		Bespoke

## Charges for branch connections into a barrier pipework main

These are the charges for an under-pressure connection between a new main and an existing barrier pipework main. These charges are per connection.

Pipework size	Description	Charge Per connection
<b>Up to and including 100mm</b>	Excavation by others	£2,446.41
	Excavation & lay by Water Company required in unmade ground	£3,002.04
	Excavation & lay by Water Company required in the footpath	£3,608.56
	Excavation & lay by Water Company required in a type 3/4 carriageway	£4,353.00
	Excavation & lay by Water Company required in a type 1/2 carriageway	£4,504.40
<b>Above 100mm up to and including 200mm</b>	Excavation by others	£4,807.20
	Excavation & lay by Water Company required in unmade ground	£5,529.57
	Excavation & lay by Water Company required in the footpath	£6,426.07
	Excavation & lay by Water Company required in a type 3/4 carriageway	£7,095.12
	Excavation & lay by Water Company required in a type 1/2 carriageway	£7,276.79
<b>Above 200mm up to and including 250mm</b>	Excavation by others	£19,102.94
	Excavation & lay by Water Company required in unmade ground	£20,140.19
	Excavation & lay by Water Company required in the footpath	£21,093.76
	Excavation & lay by Water Company required in a type 3/4 carriageway	£22,115.84
	Excavation & lay by Water Company required in a type 1/2 carriageway	£22,383.05
<b>Above 250mm diameter</b>		Bespoke

## Fittings – e.g., valves, hydrants, wash outs, tees, bends

The following charges will apply when we need to install, replace, or remove a valve, hydrant, wash out, tee or bend on a new main.

Charges labelled as 'excavation by others' do not include excavation and backfill but do include associated chambers. All other charges within this section include all excavation and backfill requirements for these items and include associated chambers.

Fitting size	Description	Charge Per item
<b>Single spade valve</b>		£297.52
<b>Up to 4'</b>	Excavation by others	£458.04

	Excavation & lay by Water Company required in unmade ground	£639.59
	Excavation & lay by Water Company required in the footpath	£782.96
	Excavation & lay by Water Company required in a type 3/4 carriageway	£828.54
	Excavation & lay by Water Company required in a type 1/2 carriageway	£871.00
<b>Above 4" up to and including 6"</b>	Excavation by others	£705.88
	Excavation & lay by Water Company required in unmade ground	£707.52
	Excavation & lay by Water Company required in the footpath	£853.20
	Excavation & lay by Water Company required in a type 3/4 carriageway	£904.88
	Excavation & lay by Water Company required in a type 1/2 carriageway	£949.47
<b>Above 6" up to and including 9"</b>	Excavation by others	£1,083.61
	Excavation & lay by Water Company required in unmade ground	£1,084.71
	Excavation & lay by Water Company required in the footpath	£1,242.93
	Excavation & lay by Water Company required in a type 3/4 carriageway	£1,303.57
	Excavation & lay by Water Company required in a type 1/2 carriageway	£1,350.68
<b>Above 9"</b>		Bespoke

## Capping off a Main

Cap off a main	Charge Per cap off
Cap off a main up to 4" in tarmac/footway	£783.79
Cap off a main exceeding 4" up to and including 6" in tarmac/footway	£891.86
Cap off a main exceeding 6" up to and including 9" in tarmac/footway	£1,169.75
Cap off a main exceeding 6" up to and including 9" in verge/footway	£1,068.71
Cap off a main exceeding 4" up to and including 6" in unmade	£602.67
Cap off a main above 9"	Bespoke

## Back-to-back connections

Back-to-back connection	Charge Per connection
The back-to-back connection - includes the removal of end hydrants, maximum connection distance 2m and not exceeding 125mm diameter	£981.65
The back-to-back connection - includes the removal of end hydrants, maximum connection distance 2m and not exceeding 180mm diameter	£1,024.12
The back-to-back connection - includes the removal of end hydrants, maximum connection distance 2m and not exceeding 250mm diameter	£1,792.19

## Sampling

Sampling	Charge Per sample visit
This charge applies when a separate site visit is required for the purpose of sampling i.e. not included within a distribution service technician site visit	£262.54

## Pressure Test & Chlorination

Pressure Test & Chlorination	Charge Per test
Pressure Test & Chlorination	£907.79

## Trial holes

The following charges apply for making trial holes to clarify details about the existing main and the connection point.

Trial holes	Charge Per m3
Trial hole in unmade ground	£155.06
Trial hole in the footpath	£288.87
Trial hole in a type 3/4 carriageway	£421.43
Trial hole in a type 1/2 carriageway	£616.65

## Distribution service technician site visit

The following charge applies if the connection cannot be completed under pressure and a technician is required to attend site to turn off the water supply to complete the connection.

Distribution service technician site visit	Charge Per visit
Site visit to turn off supply to complete the connection	£663.02

## Stand down charges

The following charges apply if our teams are required to stand down from work because the site is not ready or available to carry out the mains laying activity at the planned time.

Stand down charges	Charge Per team per day
Charge for lay only activity	£1,306.41
Charge for open cut activity	£2,325.58

## Thrust block charges

Where thrust blocks are deemed necessary, we will provide a bespoke charge based on the site-specific requirements.

## Traffic management / Highway charges

When the connection for a water service is in the highway we sometimes have to close all, or part, of a road while we undertake the work. We have a number of fixed charges depending on how we safely manage the traffic which allows for any site specific designs that may be required.

**Traffic lights:**

Type of traffic lights: standard for up to 3 consecutive days	Charge Per set up
Two-way traffic lights	£444.13
Two-way traffic lights with manual traffic control	£1,519.29
Three-way traffic lights	£541.58
Three-way traffic lights with manual traffic control	£1,616.74
Four-way traffic lights	£639.04
Four-way traffic lights with manual traffic control	£1,714.20

**Traffic lights required for more than 3 consecutive days**

Any additional charges incurred for traffic management that is required for longer than three consecutive days will be charged on a bespoke basis.

**Closing a road or lane:**

Type of road closure: standard for up to 3 days	Charge Per set up
Standard full road closure where the speed limit is <b>up to and including 40mph</b> and not exceeding 1 mile diversion route	£524.62
Standard full road closure where the speed limit is <b>over 40mph</b> and not exceeding 1 mile diversion route	£773.30
Standard minor lane closure on a single carriageway where the speed limit is <b>up to and including 40mph</b>	£723.91
Standard major lane closure on a single carriageway where the speed limit is <b>over 40mph</b>	£2,933.15

**Closing a road or lane over the standard 3 days or a diversion route greater than 1 mile:**

Depending on the design of your site you may require a road or lane closure for longer than three consecutive days or a diversion route which is greater than one mile. These scenarios will be charged on a bespoke basis dependant on your site-specific requirements.

CAD drawings	Charge Per drawing
On occasion we have to provide the Highway Authority with a CAD drawing for traffic management set up	£111.65

**Other Highway Authority charges**

It is a legal requirement when carrying out connection work in the public highway to apply to the Local Council /Authority for a permit to work. In addition, further applications are required in the event that parking bays need to be suspended or where major traffic management is required in which case a 'temporary traffic order' will be applied for. These charges are set locally by each Council, and not by Severn Trent. The appropriate charge will be added to your quote, but a temporary traffic order is generally between £500.00 and £3,500.00. Your local authority website should be consulted for details.

Highway Authority charge	Charge Per job
Temporary traffic order	Actual charge
Permit	Actual charge
Parking bay suspension	Actual charge

**Moving a bus stop, a pedestrian crossing or street lamp**

Sometimes we have to move a bus stop, a pedestrian crossing or support a street lamp when we complete the work for a water service connection.

Type of traffic management	Charge
Work to relocate a bus stop	£154.05
Work to relocate a pedestrian crossing	£736.93
Work to support a street lamp	Bespoke

## Pre-commencement site visit

Pre-commencement site visit	Charge Per hour
Site visit or meeting by a Severn Trent appointed contract partner, including travel	£66.44

## Charges relating to private land entry

We may need to enter third party land when constructing new water connections. In certain situations, we may need to use solicitors and it may result in a compensation payment being made to the land owner. In these circumstances we'll recover the costs from you.

Private land entry	Charge Per quote
For Severn Trent to engage with specialists to prepare and undertake the necessary assessment to supply a quotation where the connection is within third party land	Bespoke
There may be occasions where we require our solicitors to investigate access to private land	Bespoke
Compensation payment	Bespoke

## Charges for the diversion of a water asset

These are the charges for work completed under S185 of the Water Industry Act 1991 where a developer can require Severn Trent to alter or move a water asset to allow the development of a site. We'll complete an initial risk assessment to help us make a decision as to whether we'll need to complete the diversion works or allow an accredited Self Lay Provider to complete the work on our behalf. Once the charges have been paid and a diversion agreement entered into, we'll carry out the necessary work.

The charges for the diversion of a water asset are made up of those elements needed to recover the reasonable costs incurred by Severn Trent as a result of completing the diversion work. We'll provide bespoke charges for completing the diversion work. If these change during construction we'll endeavour to let you know and gain your prior approval of the new charges.

Once the work is complete there will be a final reconciliation of the charges against the actual works completed.





## Contestability

The connection work that is open to competition is known as “contestable” work. This category includes the majority of work a developer needs to serve a new development and includes work to lay and test new mains and services. Because we have a responsibility to maintain wholesome water supplies to our end customers, some higher risk work will be defined as “non-contestable” and can only be carried out by us. Please refer to our separately published [Annual Contestability Summary](#) (ACS) for further detail. The ACS is periodically updated and subject to change.

All charges shown exclude VAT. Where applicable, VAT will be added at the appropriate rate.

## Self Lay specific charges

### Pre-planning enquiry

Point of connection enquiry - water	Charge
We'll let you know if our network is able to supply your proposed development site with water	£178.66

### Application charges

When you've completed the relevant application form, please send it to us with payment of the application fee, as shown in the table below, and any necessary supporting information.

Application Type	Description	Charge
<b>Self Laying of services only</b>	We'll send you a detailed breakdown of the charges, including those for both contestable and non-contestable works, and any other associated charges.	£181.07
<b>New water main – Self Lay</b>	<b>Severn Trent design</b> We'll send you a detailed breakdown of the charges, including those for both contestable and non-contestable works, and a copy of the outline design we've created. Note: this is not a construction drawing.	£1,801.34
	<b>Self Lay design approval</b> We'll send you a detailed breakdown of the charges, including those for both contestable and non-contestable works, and a copy of your design that we have vetted and accepted.	£383.33
<b>Self Lay refresh quote for a ST designed water main</b>	When a quote has expired but there's been no change to the design layout, you'll need to make a requote payment, and we'll send you updated charges, at the prevailing years rates, and an amended agreement based on the revalidation of the original design	£839.62
<b>Self Lay refresh quote for a Self Lay design approval</b>	When a quote has expired but there's been no change to the design layout, you'll need to make a requote payment, and we'll send you updated charges, at the prevailing years rates, and an amended agreement based on the revalidation of the original design vetted	£383.32
<b>Redesign for a Self Lay water main</b>	Where you've changed the water main design layout, that no longer mirrors the original agreement, we'll need to review the design, provide an updated quote, at the prevailing years rates, and send you an updated agreement. A redesign charge will therefore be applicable.	£839.62

### Charges for the source of water connection

This charge is bespoke to each scheme but the cost will be made up of the component charges published within our charging arrangements.

Our non-contestable charges can be found in the mains requisitions and associated charges section from page 38.

### Charges for a new water main

A Self Lay Provider can ask Severn Trent to complete some contestable works and the most common works that we're asked to undertake are shown in the table below.

Contestable works	Charge Per connection/ visit
The back-to-back connection - includes the removal of end hydrants, maximum connection distance 2m and not exceeding 125mm diameter	£981.65
The back-to-back connection - includes the removal of end hydrants, maximum connection distance 2m and not exceeding 180mm diameter	£1,024.12
The back-to-back connection - includes the removal of end hydrants, maximum connection distance 2m and not exceeding 250mm diameter	£1,792.19
Sampling where not included within a distribution service technician site visit. Therefore, this charge applies when a separate site visit is required for the purpose of sampling, as instructed.	£262.54

We'll provide a bespoke charge for any other contestable works that we are asked to do by a Self Lay Provider.

### Charges relating to Self Lay service connections

Where a developer has chosen to use an accredited Self Lay Provider to complete the service connection we'll look to apply an administration charge as detailed below. The administration charge applicable when bulk meter deliveries are used reflects the reduced administrative demand on Severn Trent.

Application type	Description	Charge per property/agreement
<b>Administration Charge</b>	Administration charge including individual meter delivery	£191.18
	Administration charge payable if bulk meter delivery has been selected	£84.86
<b>Agreement Charge</b>	Supply of revised Agreement	£296.49

Please note infrastructure charges are applicable to NAV connections details of which can be seen in the 'Infrastructure Charges and Environmental Incentive' section.

The following charges cover the cost of rearranging an audit whereby a Severn Trent representative attends the prearranged site audit (in line with the Adoptions Code) but the Self Lay Provider isn't on site and the audit then has to be rearranged. These charges are in line with the existing repeat inspection charges.

Rearranged audit charge	Charge Per audit
Rearranged audit within normal working hours Monday to Friday 9am – 5pm	£132.46
Rearranged audit outside of normal working hours (including Saturday and Sunday) before 9am and after 5pm	£176.02

### Timely Notification of Service Connections

Severn Trent are required to capture and input account information into the non-household water market in a timely manner. To do this, we rely on Self Lay Providers to provide the meter and

address information within the timescales set out in the Adoption Code. Failure to provide the required information within the prescribed timescales will result in a late submission charge.

We will recover costs for activity required as a result of instances where the Self Lay Provider fails to provide mandated service connection information within the required timescales as specified within Codes for Adoption which is within 1 day for non-household premises and within 5 days for household premises. This applies whether we need to verify or obtain information such as but not limited to meter serial number, meter size, meter location, current meter reading, full postal address of premises served and name of owner/occupier.

<b>Non-notification of service connection</b>	<b>Charge Per plot</b>
Late submission charge – Self Lay E Form 5 (meter and address details)	£50.65

In addition, if a Self Lay Provider fails to install a meter(s) following a property being connected to the water network, we will fit a meter to each property and charge the cost of the meter, installation and any applicable site visit charges to the self-lay provider.

<b>Meter commission</b>	<b>Charge Per meter</b>
Commission an external meter where meter details are not provided	£51.75

#### **Stand down charges**

The following charges apply if our teams are required to stand down from work due to the site not being ready or available to carry out the source of water or back to back at the planned date and time. These charges do not include any local authority charges which, if relevant, will be an additional charge at full cost.

<b>Stand down charges</b>	<b>Charge per day</b>
Charge for lay only activity	£1,306.41
Charge for open cut activity	£2,325.58

#### **Meter charges**

The meter charges noted below cover the following circumstances:

- when a Self Lay Provider fails to install the meter,
- where services are not connected at the time of the visit,
- where meter details are not provided within 5 calendar days of the connection date as required by the Adoption Code.

For all other meter charges please refer to the Meter Charges section.

<b>Meter type</b>	<b>Charge Per meter/ delivery</b>
Install and commission external meter including radio – 1st Unit	£116.44
Install and commission external meter including radio <b>at the same location and on the same visit</b> – Additional Units	£90.57
Commission an external meter that has been fitted by a customer in a Manifold internally – 1st unit	£86.25
Commission an external meter that has been fitted by a customer in a Manifold internally <b>at the same location and on the same visit</b> – Additional units	£60.38
Commission an internal radio-read meter that has been fitted by a customer – RADIO INTERNAL – 1st unit	£107.82

Commission an internal radio-read meter that has been fitted by a customer – RADIO INTERNAL <b>at the same location and on the same visit</b> – Additional Units	£81.94
Meter delivery with a 50 meter delivery limit (in addition to the appropriate install and commission charges above)	£122.24

### **Remedial Work**

Under the Water Industry Act we have a duty to ensure that all assets laid on a site are fit for purpose which includes ensuring that the Fittings Regulations are met and that any defects are corrected in a timely manner. Typically, developer customers have the opportunity to rectify issues themselves however where we are required to attend site to carry out remedial work to correct defects we reserve the right to recover all associated costs and these will be specific to the activities carried out on each scheme.

**NAV's**

**New Appointments and  
Variations**

If you're a NAV company seeking to become the appointee for a site that's currently in our area, you'll need some information from us as the incumbent water and/or wastewater company to support your application to Ofwat. This may include confirmation of whether we serve properties within the site, setting up a bulk agreement and providing a bulk connection for water and/or wastewater. The NAV application fees and charges use the same principles and methodologies applied to the equivalent services for other types of customer. The most common charges for NAVs are summarised below.

**All charges shown exclude VAT. Where applicable, VAT will be added at the appropriate rate.**

## Site served assessment

To support your application to Ofwat under the 'unserved' criteria you will need to know whether your proposed NAV site is currently served or unserved. If you send us an enquiry, we will check our records and confirm the status.

Please send us a plan showing the NAV site boundary on an OS background, stating the services requiring assessment (i.e., water, wastewater, surface water). On brownfield development sites, if there are existing premises within the NAV boundary, please provide any available details of the properties and disconnection plans.

Please send all enquiries to [new.connections@severntrent.co.uk](mailto:new.connections@severntrent.co.uk).

Site served assessment	Charge
We'll send you a letter confirming whether the site is served	£0.00

## Requesting a copy of our water and sewer network plan

If you need to know where the Severn Trent water and/or sewer network is located around your proposed development site, you can obtain a clean water and wastewater map directly from [www.digdat.co.uk](http://www.digdat.co.uk).

Access for individuals undertaking statutory work is free. You may be required to provide documentary evidence that your access is covered under statutory terms. If you are unsure, please contact the digdat service team for further guidance on 0800 085 8060.

**Please note that all details must be checked by you and not assumed to be correct.**

Map requirement	Description	Charge
<b>Water or sewer map</b>	We'll send you a map of the Severn Trent water or sewer network within the area you request – size A4 or A3	£24.58
	We'll send you a map of the Severn Trent water or sewer network within the area you request – size A2	£25.42
	We'll send you a map of the Severn Trent water or sewer network within the area you request – size A1	£29.58
	We'll send you a map of the Severn Trent water or sewer network within the area you request – size A0	£42.08
<b>Water and sewer map</b>	We'll send you a map of the Severn Trent water and sewer network within the area you request – size A4 or A3	£30.25
	We'll send you a map of the Severn Trent water and sewer network within the area you request – size A2	£38.58
	We'll send you a map of the Severn Trent water and sewer network within the area you request – size A1	£46.92

We'll send you a map of the Severn Trent water and sewer network within the area you request – size A0	£71.92
--------------------------------------------------------------------------------------------------------	--------

### Pre-planning enquiry

If you need to understand the requirements for supplying your new NAV site with bulk water and/or sewerage connections and want us to identify points of connection and/or points of discharge to our network before you make a full application, you can send us an enquiry and we'll complete an assessment.

Point of connection enquiry	Description	Charge
<b>Water</b>	We'll let you know if our network is able to supply your proposed development site with water	£178.66
<b>Waste</b>	We'll let you know if our network is able to receive the flows from your proposed development site	£197.60
<b>Water &amp; Waste</b>	We'll let you know if our network is able to supply your proposed development site with water and our network is able to receive the flows from your proposed development site	£280.60

### Bulk agreements

If we're providing a bulk water and/or wastewater connection to supply your site, we'll need to enter into a bulk supply and/or bulk discharge agreement. You can send us a request and we will complete and issue a bulk supply agreement

You can request a bulk agreement by emailing us at [NAVenquiries@severntrent.co.uk](mailto:NAVenquiries@severntrent.co.uk).

Bulk agreements	Charge
We'll prepare and send you a bulk agreement	£0.00

### Bulk water connection – mains application

When you're ready for your bulk connection you'll need to make a separate mains requisition application to obtain an offer letter containing a design and quotation for the offsite work required to provide the bulk connection to your boundary. When you've completed the application form, please send it to us along with the application charge shown in the table below, accompanied with any supporting information.

Application Type	Description	Charge
<b>New water main – requisition / bulk water connection</b>	We'll send you a design and quotation for the offsite works necessary to bring a bulk connection to your site boundary	£1,079.65
<b>Refresh existing quote (same design)</b>	When a quote has expired but there's been no change to the design layout, you'll need to make a requote payment, based on the applicable published charge at that point in time, and we'll send you up to date costs and an amended agreement	£839.62
<b>Redesign of development (revised quote for a revised design)</b>	Where you've changed the water main design layout, that no longer mirrors the original agreement, we'll need to review the revised design, provide an updated quote, based on the applicable published charge at that point in time, and send you an updated agreement.	£839.62

## Bulk discharge – sewer connection applications

Our response to your initial point of connection enquiry will identify a suitable point of discharge for your site. When you are ready to make your bulk sewer connection to our network, you'll need to apply for approval to connect using the S106 sewer connection application process. When you've completed the application form, please send it to us along with the application charge shown in the table below, accompanied with any supporting information.

Sewer connection	Charge
<b>Connection to a public sewer (in the public highway)</b>	
Approval for 1 length of lateral drain/ sewer (15 metres)	£515.28
Two inspections during normal working hours (Monday to Friday 9am to 5pm)	
<b>Connection to a public sewer (not in the public highway)</b>	
Two inspections during normal working hours (Monday to Friday 9am to 5pm)	£279.83

## Timely notification of service connections

We reserve the right to recover costs for activity resulting from a NAV failing to provide timely service connection information. We believe a reasonable timeframe is within 30 working days of making the connection and critically within the relevant financial year

Late submission	Charge Per plot
Late submission charge for non-notification	£28.09

## Charges relating to NAV service connections

At the point the service has been connected, a service charge becomes payable.

NAV service charge	Charge
Service charge per property connected	£64.83

Where Severn Trent provide one service to the end customer, for example the NAV provides water services and Severn Trent provide waste services, there is an account set up charge per property connected. This charge is only applicable where we provide a service to the end customer and is additional to the service charge.

Account set up charge	Charge
Additional charge where water or waste service is provided by Severn Trent. This charge is per property connected.	£4.86

Infrastructure charge	Charge Per Property
Water infrastructure charge	£385.36
Sewerage infrastructure charge	£499.62

Infrastructure charges are applicable to NAV property connections, details of which can be seen in the Infrastructure Charges section.

Environmental Component	Charge Per Property
Water environmental component	£48.65
Waste environmental component	£43.11



Environmental component charges are applicable to NAV property connections, details of which can be seen in the Environmental Component and Incentive section.

### **Charges relating to metering and associated equipment when connecting off a trunk main**

When determining a point of connection, we review all options available and will exhaust all other points of connection prior to concluding that connecting from a strategic/trunk main is required.

Consistent with our company design standards manual, offtakes from a trunk main require a meter. This requirement is in place to maintain the integrity of our wider network and protect all customers. The need for a meter only arises because of the new development i.e., if the development did not occur, we would not have an offtake from the main and hence the meter. In this circumstance, that only occurs in a small number of cases, the driver of the cost is the new development. Therefore, consistent with setting charges that are fair and, ensuring that the balance between contributions to costs by Developers and other customers is broadly maintained, we do not believe that the generality of customers should bear this (shallow) connection cost and will therefore make a charge to our NAV customer for the meter.

If Severn Trent or another party was providing the service, they would also be charged for the meter. This consistency is critical to maintain a level playing field and support the development of effective markets.

### **Trunk mains**

A trunk main (referenced as a strategic asset) is defined as a water main that interconnects source(s), water treatment works, service reservoirs and/or supply areas, normally with no/or minimum direct customer connections. Trunk mains will often be pipelines of 300mm nominal diameter or greater, although smaller sized pipes may operate as trunk mains.

Trunk mains are critical for the transfer of water making up the arteries of our network, therefore it is critical that offtakes are firstly kept to a minimum and secondly always metered. Any event on a trunk main, due to its size and importance, can impact huge areas and thousands of customers so metering is key to an effective response.

The design criteria for connecting from a trunk main is different to connecting from a distribution main in that meters must be provided at all off-takes. These are installed to ensure there are clear visibility of flows through our mains which are integral to our network. Our design standards also dictate that certain ancillaries be installed as part of the design specification, such as non-return valves (NRV) and meter bypasses. Bypasses are installed so that the meter and NRV can be maintained while ensuring the customer does not lose supply. Design standards are aligned to our principles of good distribution management and our 'always on' philosophy. It is also important to enable a clear delineation between who owns what, with the ability to ensure that problems can be easily identified.

### **Non-Compliance**

For any departures from standard process that results in non-compliance and requires consideration by and/or engagement with the senior leadership team, an hourly rate will be charged.

	Charge per hour
Work required as a result of non-compliance	£96.10

# Sewer charges

## Site specific charges – sewer

Site specific charges for sewers are made up of the connection services necessary to connect a development to our existing sewer network. This type of work can include new sewers, lateral drains, pumping stations and rising mains and other infrastructure needed to satisfactorily deal with domestic, and on occasions non-domestic, sewerage from a development.

Many developers design and construct their own sewers, often using a third party (drainage) contractor and then offer them to Severn Trent, or a NAV, for adoption. However, a developer can request Severn Trent lay sewers from the site boundary and connect them into the existing network.

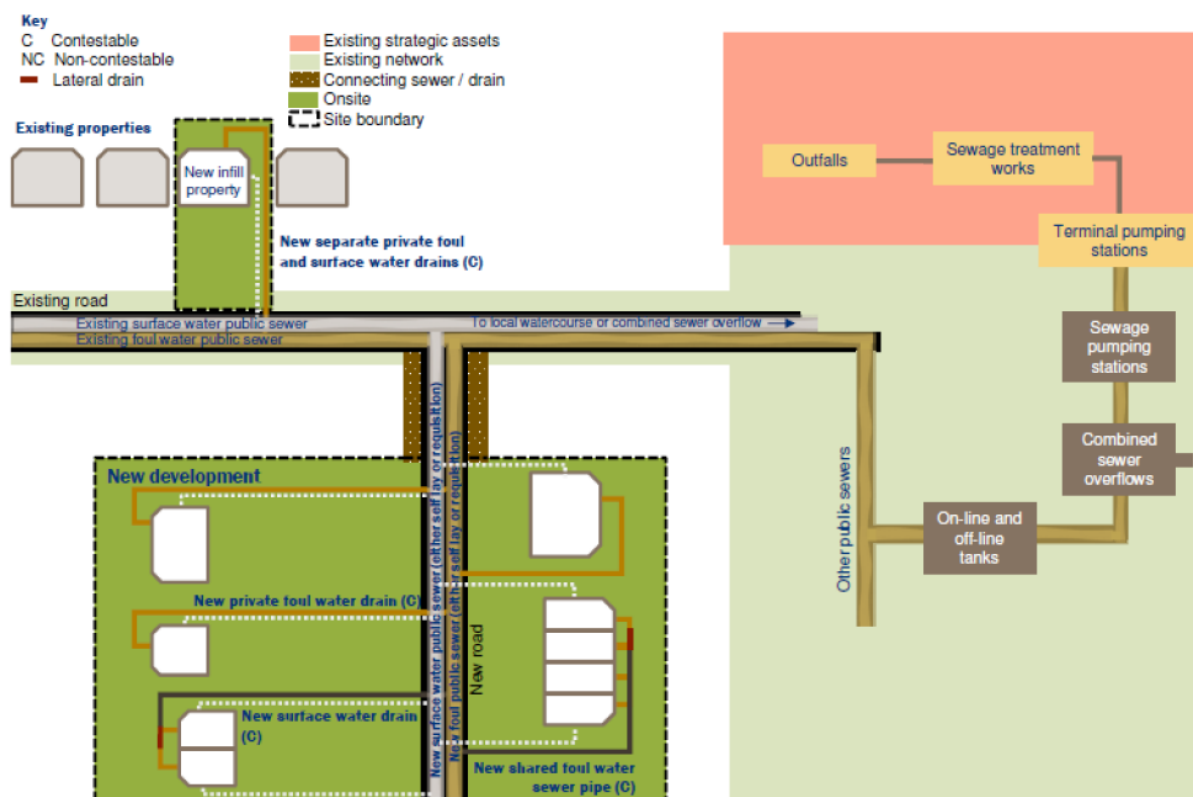
Site specific work is distinct from network reinforcement work, which provides any necessary additional capacity as a result of a new development. Any network reinforcement work needed as a direct result of new development is included in the infrastructure charges.

Should a developer have significant non-domestic flows, we may need a contribution from the developer.

Where we have to reinforce our existing infrastructure for the purpose of domestic flows, the costs for this reinforcement work will be borne in full by Severn Trent, i.e., it will not form part of the site specific charge.

The diagram below (Figure 2) shows this in more detail. Site specific works are those undertaken within both the dark green shaded area and brown with white dots shaded area. The charges for these works will be paid in full by the developer.

Figure 2 Typical connections work and the location of existing waste assets



Unless stated otherwise, all charges shown exclude VAT. Where applicable, VAT will be added at the appropriate rate.

## Sewer requisition charges

This is the charge for the works in accordance with the duties imposed by section 98(1) (provision of requisitioned public sewer) of the Water Act 1991.

Sewer requisition charges become payable when a developer requests Severn Trent provide a new public sewer or lateral drain for a new development. We'll provide a bespoke charge for each requisition.

This bespoke charge will consider such things as:

- The extent of works
- The ground conditions
- Any land entry requirements
- Any legal consents and agreements
- Surveys
- Highway restriction noticing
- Compensation
- The developer's build programme

The charges will be recalculated on completion of the design and feasibility stage and pre contract awarded. A balance payment or refund may be required at this stage and prior to progressing the work. Once the work is complete, we'll undertake a final reconciliation of the charges against the works actually completed.

## Sewer adoption inspection and bond charges – pre construction

These are the charges for the work in accordance with the duties imposed by section 104 of the Water Act 1991.

The sewers that will serve a new development site can be designed by a developer, approved by us and then constructed by the developer. We'll then enter into a legal Agreement to adopt these sewers if they are designed to current industry standards, Design and Construction Guidance, and Severn Trent's supplementary requirements.

We'll charge a sewer adoption inspection charge and a sewer adoption bond charge and a legal agreement fee charge for all site-specific work for adoptable sewers.

This sewer adoption inspection charge will cover the cost for technical vetting, processing the Section 104 submission and completing the inspections of the adoptable site. This includes the connection to our existing network.

The sewer adoption bond charge is a security payment for Severn Trent to draw off should we need to complete remedial works or finish the construction of the sewers for any reason.

We now offer qualifying applicants a **Bond Waiver** on new Section 104 applications. More information can be found on our [website](#).

## How we've calculated the sewer adoption inspection and bond charges

The sewer adoption inspection charge is calculated as a per metre charge multiplied by the proposed combined length of sewers to give us the total costs of the works.

The per metre charge is calculated as:

1. The combined total of calculated gravity sewer and associated manholes construction costs

2. The combined total meterage of gravity sewers and associated manholes over the same period

This gives us a per metre charge (which includes any in-line storage less than 1350mm diameter).

On top of this we have a few separate charges to reflect other site requirements, such as headwalls, flow control chambers, etc.

We total these charges to give an approximate total construction cost:

- 1.82% of these costs will represent the total sewer adoption inspection charge (minimum inspection fee of £500 and maximum inspection fee of £20,000), and
- 10% of these costs will represent the total sewer adoption bond charge (minimum bond fee of £5,000).

A breakdown of all our sewer adoption charges are shown in the tables below:

Charge type	Description	Charge Per meter/ unit/ station
<b>Gravity sewers (Per metre)</b>	Gravity sewers – includes in-line storage less than 1350mm diameter – Inspection charge	£8.02
	Gravity sewers – includes in-line storage less than 1350mm diameter – Bond charge	£42.17
<b>Headwall (Per unit)</b>	Headwall – Inspection charge	£62.65
	Headwall – bond charge	£250.58
<b>Flow control chamber (Per unit)</b>	Flow control chamber – inspection charge	£62.65
	Flow control chamber – bond charge	£250.58
<b>m<sup>3</sup> storage over 1350mm diameter (Per unit)</b>	m <sup>3</sup> storage over 1350mm diameter – inspection charge	£12.53
	m <sup>3</sup> storage over 1350mm diameter – bond charge	£50.12
<b>Pumping station (Per station)</b>	Pumping station – inspection charge	2.5% of bespoke charges
	Pumping station – bond charge	10% of bespoke charges
<b>Rising main not exceeding 225mm diameter (Per metre)</b>	Rising main – inspection charge	£2.49
	Rising main – bond charge	£9.93
<b>Adoptable lateral drains (Per metre)</b>	Adoptable lateral drains – inspection charge	£4.01
	Adoptable lateral drains – bond charge	£16.04

## Other adoption charges for a new sewer

These charges are for the works associated with adopting a new sewer that has been laid by a third party contractor on the request of the developer,

Charge type	Description	Charge Per outstation/ visit
<b>PS telemetry</b>	Provision and installation of an outstation (including 12 months listening service)	£6,588.10
	This charge covers one survey visit and the installation	
	Visit to install an external 4G modem	£992.87
	Visit to install a CAT-M modem	£849.37

	Any additional visits required to complete work on the outstation	£574.43
--	-------------------------------------------------------------------	---------

If outstation up-time remains below the required 98% level after the installation of an external modem or CAT-M modem, we may need to install a broadband connection for the outstation. We will discuss this with you and provide a bespoke quote.

Charge type	Description	Charge
<b>Listening service (Per annum)</b>	Listening services over and above initial 12 months	£600.00 Includes VAT
<b>Locks and signs (Per station)</b>	Installation of locks and signs at pumping station	£1,035.09
<b>Amended design (Per design)</b>	Reassessment of an amended design, not including a pumping station, after technical approval has been issued	£73.78
	Reassessment of hydraulically significant design changes, not including a pumping station, after technical approval has been issued. Or any reassessment of an amended design after a S104 agreement has been signed and completed.	£191.23
	Reassessment of hydraulically significant design changes, including changes to a pumping station after technical approval has been issued	£242.44
<b>Other charges (Per letter)</b>	A letter to the bondsman confirming that the bond has been released	£27.34

## Sewer adoption inspection and bond charges – post construction

These are the charges for the work in accordance with the duties imposed by section 102 of the Water Act 1991.

We are sometimes asked to adopt sewers that serve a development years after they have been constructed. In these circumstances we'll always look to adopt the sewers but will need various documentation from the householder, or their representative, to assess the condition of the sewers and associated assets. Often, we'll look to carry out inspections and ask for trial holes to be dug.

Charge type	Description	Charge
<b>Sewer lengths offered for adoption (Per length)</b>	To complete inspections of the existing sewers and associated assets (not including the pumping station)	£41.93
<b>Pumping stations (Per station)</b>	To complete inspection of pumping stations	£209.68

## Sewer connection charges

These are the additional inspection charges for sewer connections in accordance with the duties (or rights) under section 106 sewer connections of the Water Act 1991.

Charge type	Description	Charge Per inspection
<b>Repeat inspection</b>	Repeat inspection within normal working hours Monday to Friday 9am – 5pm	£130.68
	Repeat inspection outside of normal working hours Monday – Friday before 9am and after 5pm	£192.58

## Legal charges

We have a few legal charges associated with the adoption of sewers and sewer connections which are shown in the table below.

Charge type	Description	Charge
<b>Legal agreements (Per agreement)</b>	To produce and provide a legal agreement for a section 104 adoption or section 185 diversion	£214.77
<b>Sewage pumping station (SPS) land transfer</b>	Up to the sum of £1,250.00 plus disbursements whether or not the matter proceeds to completion for our solicitors to complete the legal documentation in respect of the land transfer of the SPS	£1,250.00 plus disbursements
	Our solicitors may request a further undertaking for payment of additional fees if the transfer of the pumping station becomes protracted	On request
<b>Sustainable drainage system (SUDS) Easement</b>	Up to the sum of £1,250.00 plus disbursements whether or not the matter proceeds to completion the Easement associated with the SUDs feature	£1,250.00 plus disbursements
	Our solicitors may request an additional fee if securing the easement becomes protracted	On request
<b>Unilateral deed of grant</b>	Our fee for dealing with a unilateral Deed of Grant should you choose our services	£1,250.00 plus disbursements
<b>Miscellaneous</b>	We may ask our solicitors to review wording amendments on a sewer Adoption Agreement	Bespoke
	We may ask our solicitors to review wording amendments on a unilateral Deed of Grant of Easement	Bespoke
	There may be occasions that we require our solicitors to investigate access to private land	Bespoke

### Note:

1. Disbursements are those legal fees that Severn Trent do not see as they are paid directly to a solicitor
2. A developer, or third-party contractor, can use any solicitor to complete the relevant documentation

## Charges for the diversion of a sewer asset

These are the charges for works completed under S185 of the Water Industry Act 1991 where a developer can ask Severn Trent to alter or move a sewer asset to allow the development of a site.

We'll complete an initial risk assessment to help us make a decision as to whether we complete the diversion works or allow a third party (drainage) contractor to complete the work on our behalf. Once the charges have been paid and a diversion agreement entered into, we'll either allow a self-lay diversion or carry out the necessary work ourselves.

The charges for the diversion of a sewer asset are made up of those elements needed to recover the reasonable costs incurred by Severn Trent as a result of completing or overseeing the diversion work. We will provide bespoke charges for completing the diversion work. If these change during construction, we'll endeavour to let you know and gain your prior approval of the new charges.

If Severn Trent have completed the diversion work there will be a final reconciliation of the charges against the actual works completed.

# Additional information



## Miscellaneous charges

We will charge for repairs for damage to our water and sewerage assets, pipes and/or apparatus including, where appropriate, under section 174 of the Water Industry Act 1991, to whoever is responsible for damaging them. We will recover all costs incurred (including to both Severn Trent Water and/or our contractors) associated with the investigation, administration, issuance of statutory notices, repair, maintenance and/or reinstatement of the asset, pipe or apparatus. We will also recover any other costs we incur as a result of the damage.

We will charge for the alteration or removal of any water or sewerage asset, pipe and/or apparatus where any of our statutory or legal rights are interfered with to whoever is responsible for interfering with those rights (including instances of unconsented build-over or build-near our assets, pipes and/or apparatus). We will recover all costs incurred (including to both Severn Trent Water and/or our contractors) associated with the investigation, administration, issuance of statutory notices, removal, alteration, repair, maintenance and/or reinstatement of the asset, pipe and/or apparatus. We will also recover any other costs we incur as a result of the damage.

Where we discover an unlawful connection to our water mains we will discuss required remedial steps with you. You are responsible for undertaking these required remedial steps at your cost. If we need to undertake this remedial work on your behalf, we will charge you for this including all our direct and indirect costs associated including, but not limited to: investigation, administration, removal of unlawful connection, repair and remediation to our water mains (including to both Severn Trent Water and/or our contractors). If you do not allow us to access to complete this remedial work, we may seek a warrant to enter your land and undertake the remedial work. We may charge you for any costs associated with obtaining and executing this warrant. If we decide to prosecute your unlawful connection to our water mains (even if remedial work is planned, in progress or complete) we reserve the right to charge you for any costs (including legal costs) we incur in undertaking this step.

## Disputes

We always aim to give our developer customers the best possible service, and should there be a problem we want to put it right straight away.

When you receive a quote from us, we'll always give you the name and contact telephone number for someone in our Developer Services team who'll be your point of contact should things not go according to plan. However, if you're still not entirely happy you can consider downloading our [complaints procedure here](#).

# Typical Worked examples

**In this section we'll share with you six examples of typical developments and the charges that are likely to be relevant for each scenario.**

All other charges are shown net of VAT, which will be added if applicable

### Example 1: Single connection to a house from an existing main

This worked example provides indicative charges for a single connection to an existing water main of 90mm diameter polyethylene (PE). The worked example includes the associated charges for a single property connection to an existing sewer, which is completed by the Developer Customer. These charges are specified under 'Other Charges'.

Within construction charges are included: Service pipe installation, boundary box fitting, meter installation, excavation, reinstatement.

Pipework:

- 25 – 32mm diameter PE pipe
- 4m pipework in road

Traffic management assumes the road (Type 3-4) is 40mph, has two lanes and does not require a road closure or lane closure. Two-way automated lights are required. There is also an assumption that the only payable council charges are for permitting.

#### *Assumptions:*

- *This example includes traffic management which is a standard set up for up to three days.*
- *Permit charges are actual charges provided by each council; in this example we've used charges provided by Warwickshire County Council.*
- *Any additional items necessary for your specific site will be discussed personally and charged accordingly.*
- *Typically, an SLP would not complete a single connection to one property within our area therefore we've not included this alternative delivery method in the example.*

Scenario 1: Single connection to a house from an existing main									Alternative Delivery Method			
Applicable Charge?	Item	Unit	Qty	Rate (£)	Total charge (£)	Page no.	Barrier Pipe Uplift/Rate	Barrier Pipe Total Charge (£)	Contestable? (Y/N)	Self-Lay Rate (£)	Self-Lay Total Charge (£)	Page no.
	<b>Pre-Construction Charges</b>											
Y	Water Service Connection	Per application	1	£162.50	£162.50	13			N			
	Administration Fee	Per application		N/A								
	Design Fee	Per application		Included in above rate								
	<b>Construction Charges</b>											
Y	Single supply 2-5m excavate & lay	Per connection	1	£2,581.99	£2,581.99	30			Y			
Y	Two-way traffic lights	Per job	1	£444.13	£444.13	32			Y			
Y	Permits	Per permit	1	£28.00	£28.00	32			N			
	Meters	Per meter	0	£0.00	£0.00	37			Y			
	<b>Other Charges</b>											
Y	Sewer Connection	Per application	1	£279.83	£279.83	15			N			
	<b>Infrastructure Charges</b>											
Y	Water Infrastructure Charge	Per property	1	£385.36	£385.36	20			N			
Y	Sewerage Infrastructure Charge	Per property	1	£499.62	£499.62	20			N			
	<b>Environmental Incentives</b>											
Y	EI Component - Water	Per property	1	£48.65	£48.65	22			N			
	EI Incentive - Water	Per property	1	-£250.00	-£250.00	23						
	EI Component - Waste	Per property	1	£43.11	£43.11	22						
Y	EI Incentive - Waste	Per property	1	-£100.00	-£100.00	25			N			
	<b>Totals</b>				<b>£4,123.19</b>							

Unbundled water service connection charge				Unbundled Single supply 2-5 excavate and lay charges			
Item	Qty	Rate	Total	Item	Qty	Rate	Total
Application fee	1	£87.72	£87.72	Connection	1	£1,444.94	£1,444.94
Design fee	1	£74.78	£74.78	Pipework	4	£281.00	£1,124.00
<b>Total</b>			<b>£162.50</b>	Meter	1	£0.00	£0.00
Unbundled sewer connection charge				Meter installation	1	£13.05	£13.05
Application fee	1	£140.55	£140.55	<b>Total</b>			<b>£2,581.99</b>
Design fee	1	£139.28	£139.28				
<b>Total</b>			<b>£279.83</b>				

### Example 1a: Single connection from an existing main to four properties using a four-port manifold

This worked example provides charges for four new properties that were converted from a single household property and will be connected to an existing water main of 90mm diameter PE using a four-port manifold. Each property would be individually metered. The worked example includes the associated charges for a single property connection to an existing sewer, which is completed by the Developer Customer. These charges are specified under 'Other Charges'.

Within construction charges are included: Service pipe installation, boundary box fitting; meter installation, excavation, reinstatement.

Pipework:

- 25 – 32mm diameter PE pipe
- 4m pipework in road, 4m pipework in unmade ground

Traffic management assumes the road (Type 3-4) is 40mph, has two lanes and does not require a road closure or lane closure. Two-way automated lights are required. There is also an assumption that the only payable council charges are for permitting.

#### *Assumptions:*

- *This example includes traffic management which is a standard set up for up to three days.*
- *Permit charges are actual charges provided by each council; in this example we've used charges provided by Warwickshire County Council.*
- *Any additional items necessary for your specific site will be discussed personally and charged accordingly.*

*Typically, an SLP would not complete a single connection to one property within our area therefore we've not included this alternative delivery method in the example.*

Scenario 1a: Single connection to a house from an existing main									Alternative Delivery Method			
Applicable Charge?	Item	Unit	Qty	Rate (£)	Total charge (£)	Page no.	Barrier Pipe Uplift/Rate	Barrier Pipe Total Charge (£)	Contestable? (Y/N)	Self-Lay Rate (£)	Self-Lay Total Charge (£)	Page no.
	<b>Pre-Construction Charges</b>											
Y	Water Service Connection	Per application	1	£162.50	£162.50	13			N			
	Water Service Connection (>3)	Per application	1	£98.71	£98.71	13						
	Administration Fee	Per application		N/A								
	Design Fee	Per application		Included in above rate								
	<b>Construction Charges</b>											
Y	Single supply 0-5m excavate & lay	Per connection	1	£6,408.22	£6,408.22	30			Y			
Y	Two-way traffic lights	Per job	1	£444.13	£444.13	32			Y			
Y	Permits	Per permit	1	£28.00	£28.00	32			N			
	Meters	Per meter	0	£0.00	£0.00	37			Y			
	<b>Other Charges</b>											
Y	Sewer Connection	Per application	1	£279.83	£279.83	15			N			
	<b>Infrastructure Charges</b>											
Y	Water Infrastructure Charge	Per property	3	£385.36	1,156.08	20			N			
Y	Sewerage Infrastructure Charge	Per property	3	£499.62	£1,498.86	20			N			
	<b>Environmental Incentives</b>											
Y	EI Component - Water	Per property	4	£48.65	£194.60	22			N			
	EI Incentive - Water	Per property	4	-£250.00	-£1,000.00	23						
	EI Component - Waste	Per property	4	£43.11	£172.44	22						
Y	EI Incentive - Waste	Per property	4	-£100.00	-£400.00	25			N			
	<b>Totals</b>				<b>£9,043.37</b>							

Unbundled application fees				Unbundled Single Connection 0-5m excavate and lay charges			
Item	Qty	Rate	Total	Item	Qty	Rate	Total
Application fee	1	£87.72	£87.72	Connection	1	£3,495.17	£3,495.17
Design fee	1	£74.78	£74.78	Pipework	8	£362.50	£2,900.00
<b>Total</b>			<b>£162.50</b>	Meter	4	£0.00	£0.00
				Meter installation	1	£13.05	£13.05
Application fee	1	£35.54	£35.54	<b>Total</b>			<b>£6,408.22</b>
Design fee	1	£63.17	£63.17	<b>Unbundled sewer connection charge</b>			
<b>Total</b>			<b>£98.71</b>	Application fee	1	£140.55	£140.55
				Design fee	1	£139.28	£139.28
				<b>Total</b>			<b>£279.83</b>

## Example 2: Single connection to a block of flats from an existing main

This worked example provides charges for a block of 10 flats to be connected to an existing water main of 90mm diameter polyethylene (PE). Each flat would be individually metered. The worked example includes the associated charges for connection to an existing sewer, which is completed by the Developer Customer.

Within construction charges are included: Service pipe installation, boundary box fitting, meter installation, excavation; reinstatement.

Pipework:

- 63mm diameter PE pipe
- 4m pipework in road, 4m pipework in unmade ground

Traffic management assumes the road (Type 3-4) is 40mph, has two lanes and does not require a road closure or lane closure. Two-way automated lights are required. There is also an assumption that the only payable council charges are for permitting.

### *Assumptions:*

- *This example includes traffic management which is a standard set up for up to three days*
- *Permit charges are actual charges provided by each council; in this example we've used charges provided by Warwickshire County Council*
- *We've assumed one bulk meter delivery charge which covers the delivery of 50 meters (per delivery). Additional charges will apply if more than 50 meters are required for delivery.*
- *Application fee included for waste connection not in the public highway*
- *Any additional items necessary for your specific site will be discussed personally and charged accordingly.*
- *Typically, an SLP would not complete a single connection to a block of flats within our area therefore we've not included this alternative delivery method in the example.*

Scenario 2: Single connection to a block of flats from an existing main									Alternative Delivery Method						
Applicable Charge?	Item	Unit	Qty	Rate (£)	Total charge (£)	Page no.	Barrier Pipe Uplift/Rate	Barrier Pipe Total Charge (£)	Contestable? (Y/N)	Self-Lay Rate (£)	Self-Lay Total Charge (£)	Page no.	NAV Rate (£)	NAV Total Charge (£)	Page no.
	Pre-Construction Charges														
Y	Large Diameter Water Service Connection	Per application	1	£342.95	£342.95	13			N						
	Administration Fee	Per application		N/A											
	Design Fee	Per application		Included in above rate											
	Construction Charges														
Y	LDC 5–12m excavate & lay	Per connection	1	£4,440.58	£4,440.58	30			Y						
Y	Two-way traffic lights	Per job	1	£444.13	£444.13	32			Y						
Y	Permits	Per permit	1	£28.00	£28.00	32			N						
Y	Commission an internal radio-read meter that has been fitted by a customer – RADIO INTERNAL – 1st unit	Per meter	1	£107.82	£107.82	37			Y						
	Commission an internal radio-read meter that has been fitted by a customer – RADIO INTERNAL at the same location – Additional Units	Per meter	9	£81.94	£737.46	37									
Y	Meter delivery	Per delivery	1	£122.24	£122.24	37			N						
	LDC account set up	Per property	9	£20.02	£180.18	31									
	Other charges														
Y	Sewer Connection	Per application	1	£279.83	£279.83	15			N						
	Infrastructure Charges														
Y	Water Infrastructure Charge	Per property	10	£385.36	£3,853.60	20			N						
Y	Sewerage Infrastructure Charge	Per property	10	£499.62	£4,996.20	20			N						
	Environmental Incentives														
Y	EI Component – Water	Per property	10	£48.65	£486.50	22			N						
	EI Incentive – Water	Per property	10	-£250.00	-£2,500.00	23									
	EI Component – Waste	Per property	10	£43.11	£431.10	22									
Y	EI Incentive – Waste	Per property	10	-£100.00	-£1,000.00	25			N						
	Totals				£12,950.59										



Unbundled application fees				Unbundled LDC 5-12m excavate and lay charges			
Item	Qty	Rate	Total	Item	Qty	Rate	Total
Application fee	1	£163.46	£163.46	Connection	1	£2,122.02	£2,122.02
Design fee	1	£159.13	£179.49	Pipework	8	£289.82	£2,318.56
<b>Total</b>			<b>£342.95</b>	<b>Total</b>			<b>£4,440.58</b>
Unbundled sewer connection charge							
Application fee	1	£140.55	£140.55	Meters	10	£0.00	£0.00
Design fee	1	£139.28	£139.28				
<b>Total</b>			<b>£279.83</b>	Meter installation – first meter	1	£107.82	£107.82
				Meter installation – additional meter	9	£81.94	£737.46
				<b>Total</b>			<b>£845.28</b>

**Example 3: Medium housing development requiring new mains and communication pipes (excavation and reinstatement by others)**

This worked example provides charges associated with the provision of new water mains and individual connections from them, for each of the 50 new houses. The worked example includes the associated charges for the 50 property connections to an existing sewer, which are completed by the Developer Customer. This worked example assumes excavation and reinstatement activities are completed by others, except for the excavation leading to the connection to the existing water main.

Within construction charges are included: Mains laying, service pipe installation, boundary box fitting, meter installation.

Technical Specification (Connection)	Technical Specification (Mains)
<p>Pipework (no excavation):</p> <ul style="list-style-type: none"><li>• Connection to Existing Main of 180mm diameter PE</li><li>• 3m pipework laying (per communication pipe)</li></ul>	<p>Pipework: Total length 300m, consisting of:</p> <ul style="list-style-type: none"><li>• 125mm diameter PE – 10m road type 3-4 (leading to the point of connection to an existing water main)</li><li>• 125mm diameter PE – 190m</li><li>90mm diameter PE – 100m</li></ul>

Design Considerations:

- 180mm diameter existing main, serving 150 existing customers
- Three commissioning phases
- Three sample chlorination and connections – footpath
- Four washouts – unmade ground
- Five valves (1 x 150mm, 3 x 100mm, 1 x 80mm) – unmade ground
- One trial hole – unmade ground

Traffic management assumes the road (Type 3-4) is 50mph, has two lanes and requires a road closure and eight parking bay suspensions. Additional council charges for permitting should be included.

Scenario 3: Medium housing development requiring new mains and communication pipe (excavation and reinstatement by others)									Alternative Delivery Method						
Applicable Charge?	Item	Unit	Qty	Rate (£)	Total charge (£)	Page no.	Barrier Pipe Uplift/Rate	Barrier Pipe Total Charge (£)	Contestable? (Y/N)	Self-Lay Rate (£)	Self-Lay Total Charge (£)	Page no.	NAV Rate (£)	NAV Total Charge (£)	Page no.
	<b>Pre-Construction Charges – Connection</b>														
N	Application Fee	Per application		N/A						N/A			N/A		
N	Administration Fee	Per application		N/A						N/A			N/A		
N	Design Fee	Per application		N/A						N/A			N/A		
	<b>Pre-Construction Charges – Mains</b>														
Y	New water mains application fee	Per application	1	£1,801.34	£1,801.34	13			N	£1,801.34	£1,801.34	49	£1,079.65	£1,079.65	55
N	Administration Fee	Per application		N/A						N/A			N/A		
N	Design Fee	Per application		Included in above rate						Included in above rate			Included in above rate		
	<b>Construction Charges – Connection</b>														
Y	Single supply 0-5m no excavation	Per connection	50	£381.85	£19,092.50	29			N	N/A			N/A		
Y	Administration charge	Per connection	50	N/A					N	£84.86	£4,243.00	50	N/A		
Y	Bulk meter delivery charge	Per delivery	1	N/A					N	£122.24	£122.24	42	N/A		
N	Meter installation	Per meter		N/A						N/A			N/A		
Y	NAV service fee	Per connection	50	N/A					N	N/A			£64.83	£3,241.50	56
	<b>Construction Charges – Mains</b>														
	<b>Onsite estimate</b>														
Y	Pipework >63mm – no excavation	Per metre	100	£23.03	£2,303.00	40			Y	N/A			N/A		
Y	Pipework >90mm – no excavation	Per metre	190	£27.35	£5,196.50	40			Y	N/A			N/A		
Y	Fittings up to 4" – no excavation	Per item	15	£458.04	£6,870.60	43			Y	N/A			N/A		
Y	Single spade valve	Per item	4	£297.52	£1,190.08	43			Y	N/A			N/A		
Y	Sampling	Per sample	3	£262.54	£787.62	45			Y	N/A			N/A		
Y	Pressure test and chlorination	Per test	3	£907.79	£2,723.37	45			Y	N/A			N/A		
Y	Back to back connection 125mm	Per connection	3	£981.65	£2,944.95	44			Y	N/A			N/A		
	<b>Offsite estimate</b>														
Y	Branch connection >100mm – unmade ground	Per connection	1	£3,124.40	£3,124.40	42			N	£3,124.40	£3,124.40	42	£3,124.40	£3,124.40	42
Y	Pipework >90mm – Type 3-4	Per metre	10	£168.74	£1,687.40	40			Y	N/A			N/A		
Y	Fittings >4" – unmade ground	Per item	1	£707.52	£707.52	44			N	£707.52	£707.52	44	£707.52	£707.52	44
Y	Thrust blocks	Per item	1	£1,920.17	£1,920.17	45			Y	N/A			N/A		
Y	Trial hole – unmade ground	Per m3	1	£155.06	£155.06	45			Y	N/A			N/A		
Y	Pre-commencement site visit	Per visit	1	£66.44	£66.44	47			N	£66.44	£66.44	47	£66.44	£66.44	47
Y	Road closure over 40mph	Per set up	1	£773.30	£773.30	46			Y	N/A			N/A		
Y	Parking bay suspensions	Per job	8	£60.00	£480.00	46			N	£60.00	£480.00	46	£60.00	£480.00	46

Y	Permits	Per job	1	£28.00	£28.00	46			N	£28.00	£28.00	46	£28.00	£28.00	46
Y	Temporary traffic regulation order	Per job	1	£1,760.00	£1,760.00	46			N	£1,760.00	£1,760.00	46	£1,760.00	£1,760.00	46
	<b>Other charges</b>														
Y	Sewer connection	Per application	1	£279.83	£279.83	15			N	£279.83	£279.83	15	£515.28	£515.28	56
	<b>Infrastructure Charges</b>														
Y	Water Infrastructure Charge	Per property	50	£385.36	£19,268.00	20			N	£385.36	£19,268.00	20	£385.36	£19,268.00	20
Y	Sewerage Infrastructure Charge	Per property	50	£499.62	£24,981.00	20			N	£499.62	£24,981.00	20	£499.62	£24,981.00	20
	<b>Environmental Incentives</b>														
Y	EI Component - Water	Per property	50	£48.65	£2,432.50	22			N	£48.65	£2,432.50	22	£48.65	£2,432.50	22
	EI Incentive - Water	Per property	50	-£250.00	-£12,500.00	23			N	-£250.00	-£12,500.00	23	-£250.00	-£12,500.00	23
	EI Component - Waste	Per property	50	£43.11	£2,155.50	22			N	£43.11	£2,155.50	22	£43.11	£2,155.50	22
Y	EI Incentive - Waste	Per property	50	-£100.00	-£5,000.00	25			N	-£100.00	-£5,000.00	25	-£100.00	-£5,000.00	25
	<b>Totals</b>				<b>£85,229.08</b>						<b>£43,949.77</b>			<b>£42,339.79</b>	

Unbundled new water mains application fee (ST and SLP)				Unbundled Single Supply 0-5m no ex charges			
Item	Qty	Rate	Total	Item	Qty	Rate	Total
Application fee	1	£486.29	£486.29	Connection	1	£266.71	£266.71
Design fee	1	£1,315.05	£1,315.05	Pipework	1	£102.09	£102.09
<b>Total</b>			<b>£1,801.34</b>	Meter	1	£0.00	£0.00
<b>Unbundled new water mains NAV application fee</b>				Meter installation	1	£13.05	£13.05
Application fee	1	£118.72	£118.72	<b>Total</b>			<b>£381.85</b>
Design fee	1	£960.93	£960.93				
<b>Total</b>			<b>£1,079.65</b>				
<b>Unbundled sewer connection charge</b>							
Application fee	1	£140.55	£140.55				
Design fee	1	£139.28	£139.28				
<b>Total</b>			<b>£279.83</b>				
Application fee	1	£185.25	£185.25				
Design fee	1	£330.03	£330.03				
<b>Total</b>			<b>£515.28</b>				

#### Assumptions:

- This example includes traffic management which is a standard set up for up to three days

- *Permit charges, parking bay suspensions and temporary traffic regulation orders are actual charges provided by each council; in this example we've used charges provided by Warwickshire County Council*
- *We've assumed excavation by others for the service connections and onsite main laying*
- *The offsite physical connection and associated fitting are in unmade ground, and the pipework is laid in type 3/4 carriageway*
- *Application fee included for waste connection not in the public highway*
- *Any additional items necessary for your specific site will be discussed personally and charged accordingly*

#### Example 4: Medium housing development requiring new mains and communication pipes (excavation and reinstatement by Water Company)

This worked example provided charges associated with the provision of new water mains and individual connections from them for each of the 50 new houses. The worked example includes the associated charges for the 50 property connections to an existing sewer, which are completed by the Developer Customer. This worked examples assumes excavation and reinstatement activities are completed by the Water Company. However, should the developer appoint an SLP or NAV, this worked example assumes these (and other contestable items) would be carried out by the SLP or NAV.

Within construction charges are includes: Mains laying, service pipe installation, boundary box fitting, meter installation, excavation, reinstatement.

Technical Specification (Connection)	Technical Specification (Mains)
<p>Pipework (unmade ground):</p> <ul style="list-style-type: none"><li>• Connection to Existing Main of 180mm diameter PE</li><li>• 3m pipework laying (per communication pipe)</li></ul>	<p>Pipework: Total length 300m, consisting of:</p> <ul style="list-style-type: none"><li>• 125mm diameter PE – 10m pipework in road (leading to the point of connection to an existing 180mm PE main)</li><li>• 125mm diameter PE – 50m pipework in footpath</li><li>• 125mm diameter PE – 140m pipework in unmade ground</li><li>• 90mm diameter PE – 100m pipework in unmade ground</li></ul>

#### Design Considerations:

- 180mm diameter existing main, serving 150 existing customers
- Three commissioning phases
- Three sample chlorination and connections – footpath
- Four washouts – unmade ground
- Five valves (1 x 150mm, 3 x 100mm, 1 x 80mm) – unmade ground
- One trial hole – unmade ground

Traffic management assumes the road (Type 3-4) is 50mph, has two lanes and requires a road closure and eight parking bay suspensions. Additional council charges for permitting should be included.

Scenario 4: Medium housing development requiring new mains and communication pipe (excavation and reinstatement by Water Company)									Alternative Delivery Method						
Applicable Charge?	Item	Unit	Qty	Rate (£)	Total charge (£)	Page no.	Barrier Pipe Uplift/Rate	Barrier Pipe Total Charge (£)	Contestable? (Y/N)	Self-Lay Rate (£)	Self-Lay Total Charge (£)	Page no.	NAV Rate (£)	NAV Total Charge (£)	Page no.
	<b>Pre-Construction Charges – Connection</b>														
N	Application Fee	Per application		N/A						N/A			N/A		
N	Administration Fee	Per application		N/A						N/A			N/A		
N	Design Fee	Per application		N/A						N/A			N/A		
	<b>Pre-Construction Charges – Mains</b>														
Y	New water mains application fee	Per application	1	£1,801.34	£1,801.34	13			N	£1,801.34	£1,801.34	49	£1,079.65	£1,079.65	55
N	Administration Fee	Per application		N/A						N/A			N/A		
N	Design Fee	Per application		Included in above rate						Included in above rate			Included in above rate		
	<b>Construction Charges – Connection</b>														
Y	Single supply 0-5m No excavation	Per connection	50	£381.85	£19,092.50	29			N	N/A			N/A		
Y	Administration charge	Per connection	50	N/A					N	£84.86	£4,243.00	50	N/A		
Y	Bulk meter delivery charge	Per delivery	1	N/A					N	£122.24	£122.24	52	N/A		
	Linear Meter (up to 63mm)	Per metre	150	£214.71	£32,206.50	30									
N	Meter installation	Per meter		N/A						N/A			N/A		
Y	NAV service fee	Per connection	50	N/A					N	N/A			£64.83	£3,241.50	56
	<b>Construction Charges – Mains</b>														
	<b>Onsite estimate</b>														
Y	Pipework >63mm – unmade ground	Per metre	100	£54.31	£5,431.00	40			Y	N/A			N/A		
Y	Pipework >90mm – unmade ground	Per metre	140	£58.62	£8,206.80	40			Y	N/A			N/A		
Y	Fittings up to 4" – no excavation	Per item	4	£458.04	£1,832.16	43			Y	N/A			N/A		
Y	Fittings up to 4" – unmade ground	Per item	11	£639.59	£7,035.49	43			Y	N/A			N/A		
Y	Single spade valve	Per item	4	£297.52	£1,190.08	43			Y	N/A			N/A		
Y	Sampling	Per sample	3	£262.54	£787.62	45			Y	N/A			N/A		
Y	Pressure test and chlorination	Per test	3	£907.79	£2,723.37	45			Y	N/A			N/A		
	Back to back connection 125mm	Per connection	3	£981.65	£2,944.95	44			Y	N/A			N/A		
	Pipework >90mm – in footpath	Per metre	50	£129.61	£6,480.50	40			Y	N/A			N/A		
	<b>Offsite estimate</b>														
Y	Branch connection >100mm – unmade ground	Per connection	1	£3,124.40	£3,124.40	42			N	£3,124.40	£3,124.40	42	£3,124.40	£3,124.40	42
Y	Pipework >90mm – Type 3-4	Per metre	10	£168.74	£1,687.40	40			Y	N/A			N/A		
Y	Fittings >4" – unmade ground	Per item	1	£707.52	£707.52	44			N	£707.52	£707.52	44	£707.52	£707.52	44
Y	Thrust blocks	Per item	1	£1,920.17	£1,920.17	45			Y	N/A			N/A		

Y	Trial hole – unmade ground	Per m3	1	£155.06	£155.06	45			Y	N/A			N/A		
Y	Pre-commencement site visit	Per visit	1	£66.44	£66.44	47			N	£66.44	£66.44	47	£66.44	£66.44	47
Y	Road closure over 40mph	Per set up	1	£773.30	£773.30	46			Y	N/A			N/A		
Y	Parking bay suspensions	Per job	8	£60.00	£480.00	46			N	£60.00	£480.00	46	£60.00	£480.00	46
Y	Permits	Per job	1	£28.00	£28.00	46			N	£28.00	£28.00	46	£28.00	£28.00	46
Y	Temporary traffic regulation order	Per job	1	£1,760.00	£1,760.00	46			N	£1,760.00	£1,760.00	46	£1,760.00	£1,760.00	46
<b>Other charges</b>															
Y	Sewer connection	Per application	1	£279.83	£279.83	15			N	£279.83	£279.83	15	£515.28	£515.28	56
<b>Infrastructure Charges</b>															
Y	Water Infrastructure Charge	Per property	50	£385.36	£19,268.00	20			N	£385.36	£19,268.00	20	£385.36	£19,268.00	20
Y	Sewerage Infrastructure Charge	Per property	50	£499.62	£24,981.00	20			N	£499.62	£24,981.00	20	£499.62	£24,981.00	20
<b>Environmental Incentives</b>															
Y	EI Component – Water	Per property	50	£48.65	£2,432.50	22			N	£48.65	£2,432.50	22	£48.65	£2,432.50	22
	EI Incentive – Water	Per property	50	-£250.00	-£12,500.00	23			N	-£250.00	-£12,500.00	23	-£250.00	-£12,500.00	23
	EI Component – Waste	Per property	50	£43.11	£2,155.50	22			N	£43.11	£2,155.50	22	£43.11	£2,155.50	22
Y	EI Incentive – Waste	Per property	50	-£100.00	-£5,000.00	25			N	-£100.00	-£5,000.00	25	-£100.00	-£5,000.00	25
	<b>Totals</b>				<b>£132,051.43</b>						<b>£43,949.77</b>			<b>£42,339.79</b>	

Unbundled new water mains application fee (ST and SLP)				Unbundled Single Supply 0-5m no ex charges			
Item	Qty	Rate	Total	Item	Qty	Rate	Total
Application fee	1	£486.29	£486.29	Connection	1	£266.71	£266.71
Design fee	1	£1,315.05	£1,315.05	Pipework	1	£102.09	£102.09
<b>Total</b>			<b>£1,801.34</b>	Meter	1	£0.00	£0.00
<b>Unbundled new water mains NAV application fee</b>				Meter installation	1	£13.05	£13.05
Application fee	1	£118.72	£118.72	<b>Total</b>			<b>£381.85</b>
Design fee	1	£960.93	£960.93				
<b>Total</b>			<b>£1,079.65</b>	Linear meterage	1	£214.71	<b>£214.71</b>
<b>Unbundled sewer connection charge</b>							
Application fee	1	£140.55	£140.55				
Design fee	1	£139.28	£139.28				
<b>Total</b>			<b>£279.83</b>				



Application fee	1	£185.25	£185.25				
Design fee	1	£330.03	£330.03				
<b>Total</b>			<b>£515.28</b>				

*Assumptions:*

- *This examples includes traffic management which is a standard set up for up to three days*
- *Permit charges, parking bay suspensions and temporary traffic regulation orders are actual charges provided by each council; in this example we've used charges provided by Warwickshire County Council*
- *Assumes all mains excavated by Water Company*
- *We've assumed excavation by other for the service connections*
- *Connections and fittings are in unmade ground*
- *Application fee included for waste connection not in the public highway*
- *Any additional items necessary for your specific site will be discussed personally and charged accordingly*

### Example 5: Large housing development requiring new mains and communication pipes (excavation and reinstatement by others)

This worked example provides charges associated with the provision of new water mains and individual connections from them, for each of 200 new houses. The worked example includes the associated charges for the 200 property connections to an existing sewer, which are completed by the Developer Customer. This worked example assumes excavation and reinstatement activities are completed by others, except for the excavation leading to the point of connection to the existing water main.

Within construction charges are included: Mains laying, service pipe installation, boundary box fitting, meter installation.

Technical Specification (Connection)	Technical Specification (Mains)
<p>Pipework (unmade ground):</p> <ul style="list-style-type: none"><li>• Connection to existing main of 180mm diameter PE</li><li>• 3m pipework laying (per communication pipe)</li></ul>	<p>Pipework: Total length 1,000m, consisting of:</p> <ul style="list-style-type: none"><li>• 180mm diameter PE – 20m pipework in type 3-4 road (leading to the point of connection)</li><li>• 180mm diameter PE – 100m pipework</li><li>• 125mm diameter PE – 480m pipework</li><li>• 90mm diameter PE – 400m pipework</li></ul>

#### Design Considerations:

- 250mm diameter existing main, serving 150 existing customers
- Six commissioning phases
- Six sample chlorination and connections – footpath
- Ten washouts – unmade ground
- Eight valves (1 x 150mm, 5 x 100mm, 2 x 80mm) – unmade ground
- Two trial hole – unmade ground

Traffic management assumes the road (Type 3-4) is 50mph, has two lanes and requires a road closure and eight parking bay suspensions. Additional council charges for permitting should be included.

Scenario 5: Large housing development requiring new mains and communication pipe (excavation and reinstatement by others)									Alternative Delivery Method						
Applicable Charge?	Item	Unit	Qty	Rate (£)	Total charge (£)	Page no.	Barrier Pipe Uplift/Rate	Barrier Pipe Total Charge (£)	Contestable? (Y/N)	Self-Lay Rate (£)	Self-Lay Total Charge (£)	Page no.	NAV Rate (£)	NAV Total Charge (£)	Page no.
	Pre-Construction Charges – Connection														
N	Application Fee	Per application		N/A						N/A			N/A		
N	Administration Fee	Per application		N/A						N/A			N/A		
N	Design Fee	Per application		N/A						N/A			N/A		
	Pre-Construction Charges – Mains														
Y	New water mains application fee	Per application	1	£1,801.34	£1,801.34	13			N	£1,801.34	£1,801.34	49	£1,079.65	£1,079.65	55
N	Administration Fee	Per application		N/A						N/A			N/A		
N	Design Fee	Per application		Included in above rate						Included in above rate			Included in above rate		
	Construction Charges – Connection														
Y	Single supply 0-5m No excavation	Per connection	200	£381.85	£76,370.00	29			N	N/A			N/A		
Y	Administration charge	Per connection	200	N/A					N	£84.86	£16,972.00	50	N/A		
Y	Bulk meter delivery charge	Per delivery	4	N/A					N	£122.24	£488.96	52	N/A		
N	Meter installation	Per meter		N/A						N/A			N/A		
Y	NAV service fee	Per connection	200	N/A					N	N/A			£64.83	£12,966.00	56
	Construction Charges – Mains														
	Onsite estimate														
Y	Pipework >63mm – no excavation	Per metre	400	£23.03	£9,212.00	40			Y	N/A			N/A		
Y	Pipework >90mm – no excavation	Per metre	480	£27.35	£13,128.00	40			Y	N/A			N/A		
Y	Pipework >125mm – no excavation	Per metre	100	£40.70	£4,070.00	40				N/A			N/A		
Y	Fittings up to 4" – no excavation	Per item	10	£458.04	£4,580.40	43			Y	N/A			N/A		
Y	Fittings up to >4" – no excavation	Per item	23	£705.88	£16,235.24	44			Y	N/A			N/A		
Y	Single spade valve	Per item	10	£297.52	£2,975.20	43			Y	N/A			N/A		
Y	Sampling	Per sample	6	£262.54	£1,575.24	45				N/A			N/A		
Y	Pressure test and chlorination	Per test	6	£907.79	£5,446.74	45			Y	N/A			N/A		
Y	Back to back connection 125mm	Per connection	5	£981.65	£4,908.25	44			Y	N/A			N/A		

Y	Back to back connection 180mm	Per connection	1	£1,024.12	£1,024.12	44			Y	N/A			N/A		
<b>Offsite estimate</b>															
Y	Branch connection >225mm – unmade ground	Per connection	1	£5,152.76	£5,152.76	42			N	£5,152.76	£5,152.76	42	£5,152.76	£5,152.76	42
Y	Pipework 180mm – Type 3-4	Per metre	20	£198.86	£3,977.20	41			Y	N/A			N/A		
Y	Fittings >4" – unmade ground	Per item	1	£707.52	£707.52	44			N	£707.52	£707.52	44	£707.52	£707.52	44
Y	Thrust blocks	Per item	1	£1,920.17	£1,920.17	45			Y	N/A			N/A		
Y	Trial hole – unmade ground	Per m3	2	£155.06	£310.12	45			Y	N/A			N/A		
Y	Pre-commencement site visit	Per visit	1	£66.44	£66.44	47			N	£66.44	£66.44	47	£66.44	£66.44	47
Y	Road closure over 40mph	Per set up	1	£773.30	£773.30	46			Y	N/A			N/A		
Y	Parking bay suspensions	Per job	8	£60.00	£480.00	46			N	£60.00	£480.00	46	£60.00	£480.00	46
Y	Permits	Per job	1	£28.00	£28.00	46			N	£28.00	£28.00	46	£28.00	£28.00	46
Y	Temporary traffic regulation order	Per job	1	£1,760.00	£1,760.00	46			N	£1,760.00	£1,760.00	46	£1,760.00	£1,760.00	46
<b>Other charges</b>															
Y	Sewer connection	Per application	1	£279.83	£279.83	15			N	£279.83	£279.83	15	£515.28	£515.28	56
<b>Infrastructure Charges</b>															
Y	Water Infrastructure Charge	Per property	200	£385.36	£77,072.00	20			N	£385.36	£77,072.00	20	£385.36	£77,072.00	20
Y	Sewerage Infrastructure Charge	Per property	200	£499.62	£99,924.00	20			N	£499.62	£99,924.00	20	£499.62	£99,924.00	20
<b>Environmental Incentives</b>															
Y	EI Component – Water	Per property	50	£48.65	£9,730.00	22			N	£48.65	£9,730.00	22	£48.65	£9,730.00	22
	EI Incentive – Water	Per property	50	-£250.00	-£50,000.00	23				-£250.00	-£50,000.00	23	-£250.00	-£50,000.00	23
	EI Component – Waste	Per property	50	£43.11	£8,622.00	22				£43.11	£8,622.00	22	£43.11	£8,622.00	22
Y	EI Incentive – Waste	Per property	50	-£100.00	-£20,000.00	25			N	-£100.00	-£20,000.00	25	-£100.00	-£20,000.00	25
	<b>Totals</b>				<b>£282,129.87</b>						<b>£153,084.85</b>			<b>£148,103.65</b>	

Unbundled new water mains application fee (ST and SLP)					Unbundled Single Supply 0-5m no ex charges			
Item	Qty	Rate	Total		Item	Qty	Rate	Total
Application fee	1	£486.29	£486.29		Connection	1	£266.71	£266.71
Design fee	1	£1,315.05	£1,315.05		Pipework	1	£102.09	£102.09
<b>Total</b>			<b>£1,801.34</b>		Meter	1	£0.00	£0.00
<b>Unbundled new water mains NAV application fee</b>					Meter installation	1	£13.05	£13.05
Application fee	1	£118.72	£118.72		<b>Total</b>			<b>£381.85</b>

Design fee	1	£960.93	£960.93				
<b>Total</b>			<b>£1,079.65</b>				
<b>Unbundled sewer connection charge</b>							
Application fee	1	£140.55	£140.55				
Design fee	1	£139.28	£139.28				
<b>Total</b>			<b>£279.83</b>				
Application fee	1	£185.25	£185.25				
Design fee	1	£330.03	£330.03				
<b>Total</b>			<b>£515.28</b>				

*Assumptions:*

- *This example includes traffic management which is a standard set up for up to three days*
- *Permit charges, parking bay suspensions and temporary traffic regulation order are actual charges provided by each council; in this example we've used charges provided by Warwickshire County Council*
- *We've assumed excavation by other for the service connections*
- *Connections and fittings are in unmade ground*
- *Application fee included for waste connection not in the public highway*
- *Any additional items necessary for your specific site will be discussed personally and charged accordingly*

### Example 6: Large housing development requiring new mains and communication pipes (excavation and reinstatement by Water Company)

This worked example provides charges associated with the provision of new water mains and individual connections from them, for each of 200 new houses. The worked example includes the associated charges for the 200 property connections to an existing sewer, which are completed by the Developer Customer. This worked example assumes excavation and reinstatement activities are carried out by the Water Company, however, should the Developer appoint an SLP or NAV, this worked example assumes these (and other contestable items) would be carried out by the SLP or NAV.

Within construction charges are included: Mains laying, service pipe installation, boundary box fitting, meter installation, excavation, reinstatement.

Technical Specification (Connection)	Technical Specification (Mains)
<p>Pipework (unmade ground):</p> <ul style="list-style-type: none"><li>• Connection to existing main of 180mm diameter PE</li><li>• 3m pipework laying (per communication pipe)</li></ul>	<p>Pipework: Total length 1,000m, consisting of:</p> <ul style="list-style-type: none"><li>• 180mm diameter PE – 20m pipework in type 3-4 road (leading to the point of connection)</li><li>• 180mm diameter PE – 100m pipework in footpath</li><li>• 125mm diameter PE – 480m pipework in unmade ground</li><li>• 90mm diameter PE – 400m pipework in unmade ground</li></ul>

#### Design Considerations:

- 250mm diameter existing main, serving 150 existing customers
- Six commissioning phases
- Six sample chlorination and connections – footpath
- Ten washouts – unmade ground
- Eight valves (1 x 150mm, 5 x 100mm, 2 x 80mm) – unmade ground
- Two trial hole – unmade ground

Traffic management assumes the road (Type 3-4) is 50mph, has two lanes and requires a road closure and eight parking bay suspensions. Additional council charges for permitting should be included.

Scenario 6: Large housing development requiring new mains and communication pipe (excavation and reinstatement by Water Company)									Alternative Delivery Method						
Applicable Charge?	Item	Unit	Qty	Rate (£)	Total charge (£)	Page no.	Barrier Pipe Uplift/Rate	Barrier Pipe Total Charge (£)	Contestable? (Y/N)	Self-Lay Rate (£)	Self-Lay Total Charge (£)	Page no.	NAV Rate (£)	NAV Total Charge (£)	Page no.
	Pre-Construction Charges – Connection														
N	Application Fee	Per application		N/A						N/A			N/A		
N	Administration Fee	Per application		N/A						N/A			N/A		
N	Design Fee	Per application		N/A						N/A			N/A		
	Pre-Construction Charges – Mains														
Y	New water mains application fee	Per application	1	£1,801.34	£1,801.34	13			N	£1,801.34	£1,801.34	49	£1,079.65	£1,079.65	55
N	Administration Fee	Per application		N/A						N/A			N/A		
N	Design Fee	Per application		Included in above rate						Included in above rate			Included in above rate		
	Construction Charges – Connection														
Y	Single supply 0–5m No excavation	Per connection	200	£381.85	£76,370.00	29			N	N/A			N/A		
Y	Administration charge	Per connection	200	N/A					N	£84.86	£16,972.00	50	N/A		
Y	Bulk meter delivery charge	Per delivery	4	N/A					N	£122.24	£488.96	52	N/A		
	Linear Meter (up to 63mm)	Per metre	600	£214.71	£128,826.00	30									
N	Meter installation	Per meter		N/A						N/A			N/A		
Y	NAV service fee	Per connection	200	N/A					N	N/A			£64.83	£12,966.00	56
	Construction Charges – Mains														
	Onsite estimate														
Y	Pipework >63mm – unmade ground	Per metre	400	£54.31	£21,724.00	40			Y	N/A			N/A		
Y	Pipework >90mm – unmade ground	Per metre	480	£58.62	£28,137.60	40			Y	N/A			N/A		
Y	Pipework >125mm – in footpath	Per metre	100	£152.66	£15,266.00	41			Y	N/A			N/A		
Y	Fittings up to 4” – no excavation	Per item	10	£458.04	£4,580.40	43			Y	N/A			N/A		
Y	Fittings up to 4” – unmade ground	Per item	23	£639.59	£14,710.57	43			Y	N/A			N/A		
Y	Single spade valve	Per item	10	£297.52	£2,975.20	43			Y	N/A			N/A		
Y	Sampling	Per sample	6	£262.54	£1,575.24	45			Y	N/A			N/A		
Y	Pressure test and chlorination	Per test	6	£907.79	£5,446.74	45			Y	N/A			N/A		

Y	Back to back connection 125mm	Per connection	5	£981.65	£4,908.25	44			Y	N/A			N/A		
Y	Back to back connection 180mm	Per connection	1	£1,024.12	£1,024.12	44			Y	N/A			N/A		
	<b>Offsite estimate</b>														
Y	Branch connection >225mm – unmade ground	Per connection	1	£5,152.76	£5,152.76	42			N	£5,152.76	£5,152.76	42	£5,152.76	£5,152.76	42
Y	Pipework 180mm – Type 3-4	Per metre	20	£198.86	£3,977.20	41			Y	N/A			N/A		
Y	Fittings >4" – unmade ground	Per item	1	£707.52	£707.52	44			N	£707.52	£707.52	44	£707.52	£707.52	44
Y	Thrust blocks	Per item	1	£1,920.17	£1,920.17	45			Y	N/A			N/A		
Y	Trial hole – unmade ground	Per m3	2	£155.06	£310.12	45			Y	N/A			N/A		
Y	Pre-commencement site visit	Per visit	1	£66.44	£66.44	47			N	£66.44	£66.44	46	£66.44	£66.44	47
Y	Road closure over 40mph	Per set up	1	£773.30	£773.30	46			Y	N/A			N/A		
Y	Parking bay suspensions	Per job	8	£60.00	£480.00	46			N	£60.00	£480.00	46	£60.00	£480.00	46
Y	Permits	Per job	1	£28.00	£28.00	46			N	£28.00	£28.00	46	£28.00	£28.00	46
Y	Temporary traffic regulation order	Per job	1	£1,760.00	£1,760.00	46			N	£1,760.00	£1,760.00	46	£1,760.00	£1,760.00	46
	<b>Other charges</b>														
Y	Sewer connection	Per application	1	£279.83	£279.83	15			N	£279.83	£279.83	15	£515.28	£515.28	56
	<b>Infrastructure Charges</b>														
Y	Water Infrastructure Charge	Per property	200	£385.36	£77,072.00	20			N	£385.36	£77,072.00	20	£385.36	£77,072.00	20
Y	Sewerage Infrastructure Charge	Per property	200	£499.62	£99,924.00	20			N	£499.62	£99,924.00	20	£499.62	£99,924.00	20
	<b>Environmental Incentives</b>														
Y	EI Component – Water	Per property	50	£48.65	£9,730.00	22			N	£48.65	£9,730.00	22	£48.65	£9,730.00	22
	EI Incentive – Water	Per property	50	-£250.00	-£50,000.00	23				-£250.00	-£50,000.00	23	-£250.00	-£50,000.00	23
	EI Component – Waste	Per property	50	£43.11	£8,622.00	22				£43.11	£8,622.00	22	£43.11	£8,622.00	22
Y	EI Incentive – Waste	Per property	50	-£100.00	-£20,000.00	25			N	-£100.00	-£20,000.00	25	-£100.00	-£20,000.00	25
	<b>Totals</b>				<b>£448,148.80</b>						<b>£153,084.85</b>			<b>£148,103.65</b>	

Unbundled new water mains application fee (ST and SLP)				Unbundled Single Supply 0-5m no ex charges			
Item	Qty	Rate	Total	Item	Qty	Rate	Total
Application fee	1	£486.29	£486.29	Connection	1	£266.71	£266.71
Design fee	1	£1,315.05	£1,315.05	Pipework	1	£102.09	£102.09
<b>Total</b>			<b>£1,801.34</b>	Meter	1	£0.00	£0.00



<b>Unbundled new water mains NAV application fee</b>				Meter installation	1	£13.05	£13.05
Application fee	1	£118.72	£118.72	<b>Total</b>			<b>£381.85</b>
Design fee	1	£960.93	£960.93				
<b>Total</b>			<b>£1,079.65</b>	Linear meterage	1	£214.71	<b>£214.71</b>
<b>Unbundled sewer connection charge</b>							
Application fee	1	£140.55	£140.55				
Design fee	1	£139.28	£139.28				
<b>Total</b>			<b>£279.83</b>				
Application fee	1	£185.25	£185.25				
Design fee	1	£330.03	£330.03				
<b>Total</b>			<b>£515.28</b>				

*Assumptions:*

- *This examples includes traffic management which is a standard set up for up to three days*
- *Permit charges, parking bay suspensions and temporary traffic regulation order are actual charges provided by each council; in this example we've used charges provided by Warwickshire County Council*
- *Assumes all mains excavated by Water Company*
- *We've assumed excavation by others for the service connections*
- *Connections and fittings are in unmade ground*
- *Application fee included for waste connection not in the public highway*
- *Any additional items necessary for your specific site will be discussed personally and charged accordingly*

# **Glossary of common terms**

# Glossary

**Administration Fee** – means the fees associated with general administration activities, after the cost advice stage, relating to the construction phase, which can include processing any payments, scheduling the works, supervision and project management, and processing information into relevant billing/management systems. This would not include site-based activities covered in construction costs, such as additional site visits.

**Adoption** – means the process whereby assets are vested in the water company and subsequently maintained at its expense.

**Alternative point of connection** – means another location indicated by the Water Company which is neither (i) a practical location indicated by the Developer Customer, nor (ii) the nearest practical location where the existing Water Main or Sewer is the same size or larger than the new connecting Water Main or Sewer.

**Annual Contestability Summary** – means the standard format document published annually (or more frequently) by the Water Company on its website setting out which work and services are Contestable Work and Services and which are Non-contestable Work and Services as described in section 3 of the Water Sector Guidance (see <http://www.water.org.uk/water-sector-guidance-approved-documents/>).

**Application Fee** – means the fee levied at point of application, which is associated with upfront application processing, which can include reviewing and acknowledging an application, checking that all relevant information has been received, preparing a cost advice, an agreement or the acceptance for the proposed works.

**Barrier Pipe** – means a polyethylene (PE) pipe with an aluminium barrier layer conforming to water industry specification 4-32-19

**Bond or Surety** – means a cash bond or financial guarantee underwritten by an appropriate warranty provider, bank or insurance company, which is accepted by the Water Company.

**Branch Connection** – means the connection of new pipework to an existing Water Main such to provide a supply of water to a Development.

**Communication pipe** – means any part of a Service Pipe which a Water Company could be, or have been, required to lay under section 46 of the Water Industry Act 1991. It consists of a pipe laid from an existing or newly laid Water Main to the boundary of a property and may include a meter housing and/or external stop valve. This can be seen in Figure 1 at the end of the glossary of terms.

**Contaminated Land** – means land by which a water company will install or request the installation of barrier pipe, following review of the previous use of site, or where proven necessary, in accordance with section 78A of the Environmental Protection Act 1990.

**Contestable work** – means the work or services that can be completed by either a Water Company or an Accredited Third Party, with the work and services relating to the provision of water supplies defined in each Water Company's Annual Contestability Summary. For work related to new sewerage services, the majority of work is considered contestable, excluding diversions and requisitions.

**Design Checking Fee** – means the cost of checking a design submitted by an Accredited Third Party.

**Design Fee** – means the cost of designing against the application, providing a detailed site drawing and design, specification and cost-advice. This may also include activities identified in the Administration Fee if that charge is not levied by the particular Water Company.

**Developer Services** – means, collectively, the activities associated with serving Developer Customers, which may include the provision of new Water Mains, new Sewers, Communication Pipes, Lateral Drains, diversions of water and sewerage assets and connections made to supply water for building purposes.

**Domestic use** – means water used primarily for domestic purposes, including for drinking, washing, cooking, central heating and sanitary purposes.

**Excavation by Others** – means any work undertaken by someone other than the Water Company in excavation, backfilling or reinstatement.

**Excavation by Water Company** – means any work undertaken by the Water Company (or an agent action on their behalf) in excavation, backfilling or reinstatement.

**Existing main** – means a Water Main or Sewer that was commissioned independently of development commencing.

**Far Side Connection** – means a connection between premises and an existing water main on the opposite side of the street to those premises, to a maximum communication pipe length of distance of 18 metres, for which a straight linear meterage rate is not applied. Beyond 18 metres, a linear meterage will apply. Where the water main is located in the centre line of the street then the connection will be considered a Far Side Connection.

**Fire Supplies** – means supplies provided solely for fire safety provision.

**Fixed charges** – means charges which are fixed in amount or which are calculated by reference to a predetermined methodology set out in a Water Company's Charging Arrangements, the application of which allows calculation at the outset of the total amount owing in the given Charging Year in respect of the charges in question. For the avoidance of doubt, a Water Company may impose Fixed Charges by reference to a unit measurement (for example, per megalitre). Furthermore, a Water Company may offer more than one Fixed Charge in charging for a service provided in accordance with the present rules (for example, by differentiating between different geographic areas).

**Footpath** – means a hard-surfaced area intended for use by pedestrian or cyclists.

**Household Premises** – means any premises used principally as a domestic dwelling or intended for such use, such as a house or flat.

**Infrastructure Credit** – means a credit which may be applied when there has previously been a billable account on the same site/address. The eligibility criteria and method of calculating Infrastructure Credits is defined by the Water Company in its Charging Arrangements. This term is autonomous from any incentives applied against the infrastructure charge, for water efficiency for example. These are defined in the term Water Efficiency Incentive.

**Infrastructure Charge** – the charges described in section 146(2) of the Water Industry Act 1991. That is, a charge paid by the Developer Customer to the Water Company when a property is connected to the company's water supply or sewer network for the first time. The charges fund wider network reinforcement to meet the increased demand arising for the new connections.

**Manifold Connection** – means where a Communication Pipe connects with a manifold to which separate Supply Pipes are connected and meters may be fitted.

**New Appointment and Variations (NAV)** – means a company appointed by Ofwat through the new appointments and variations process to provide water and/or sewerage services to customers in an area previously served by the incumbent Water Company. A new appointment is made when Ofwat appoints a company for the first time to provide services for specific geographic area. A variation occurs where an existing appointment is varied to amend the area served.

**Near Side Connection** – means a connection between premises and an existing Water Main on the same side of a street to those premises. Where the Water Main is in the centre line of the street then the connection will be considered a Far Side Connection.

**Network Assembly** – means components such as sluice valves or washouts, including associated chambers, needed to operate and maintain a water network.

**Network Reinforcement** – means work to provide or modify such other specified types of infrastructure (mains and tanks, service reservoirs, pumping stations, or sewers) as is necessary in consequence of the need to either provide adequate water supply and/or sewerage capacity to a development mains, service pipes, public sewers and/or lateral drains have been installed or connected by the company imposing the charge or by a company with whom the company has entered into an agreement for bulk supply or bulk discharge.

**Non-contestable Work** – means work or services that can only be completed by the Water Company (or an agent acting on their behalf) and, in the case of work or services associated with the provision of water supplies, is defined in each Water Company's Annual Contestability Summary.

**Non-domestic Use** – means water used primarily for non-domestic purposes, including anything not for Domestic Use, such as water for industrial or business use (including manufacturing processes, washing and cleaning and cooling), agricultural use and filling swimming pools.

**Non-household Premises** – means any premises not a household premises, being used principally for industrial, business, recreational or community purposes and not as a dwelling, or intended for such use.

**Non-standard Connection** – means a service sized above the standard size as defined by the Water Company.

**Phase** – means a discrete part of a Development which the Developer Customer chooses to separately progress.

**Point of connection** – means a location which is either i) a practical location indicated by a Developer Customer where the existing water main or sewer is the same size or larger than the new connecting main or sewer or, where they have not indicated a location, ii) the nearest practical location where the existing water main or sewer is the same size or larger than the new connecting main or sewer.

**Pre-Planning Enquiry** – means an enquiry submitted by a Developer Customer to understand the infrastructure requirements or considerations for proposed developments.

**Pre-Planning Enquiry Response** – means a report by the Water Company in response to a Pre-Planning Enquiry that will confirm i) if the development can be supplied with water, ii) capacity within the wastewater network, iii) if any reinforcement work will be required to supply the site together, iv) and, if applicable, identify any existing assets crossing the site which may require diverting or protecting, and v) if Network Reinforcement is required to supply the site, what indicative capital cost or range of costs is likely for these works.

**Relevant Multiplier** – means a calculation to determine the Infrastructure Charges payable relating to Non-household Premises or Household Premises subject to a common billing agreement and is based on the number and type of water fittings proposed for those premises.

**Road** – means a hard-surfaced area intended for vehicles.

**Self-certification** – means the activity whereby an Accredited Third Party inspects, checks and certifies installations, both internal and external to a premise, as being compliant with relevant standards and requirements.

**Service Connection** – means the joining of a Service Pipe to a Water Main which is provided under section 45 and 46 of the Water Industry Act 1991.

**Service pipe** – means a pipe, which is, or is to be, connected with a Water Main for supplying water from that main to any premise. This can be seen in Figure 1 at the end of the glossary of terms.

**Sewerage Sector Guidance** – means guidance documents published in accordance with Ofwat's Codes for adoption agreements, relating to the adoption of sewerage assets and available at <https://www.water.org.uk/sewerage-sector-guidance-approved-documents/>.

**Supply pipe** – means the part of the Service Pipe that is not the Communication Pipe, and which remains the customer's responsibility. This can be seen in Figure 1 at the end of the glossary of terms.

**Sustainable Drainage Incentive** – means, where offered, a reduction in infrastructure charges to a Developer Customer where they evidence that a Development will or does meet a stipulated threshold for use of a sustainable drainage solution, as defined in the Water Company's Charging Arrangements and/or specific environmental policies.

**Traffic Management Fees** – means charges to cover the cost of working in the highway safely as a result of compliance with the Traffic Management Act 2004.

**Trial Hole** – means exploratory excavation to identify the location of apparatus, prior to works commencing.

**Unmade ground** – means ground which does not have a man-made surface and may feature grass and topsoil.

**Upsizing** – means where the Water Company instructs that new Water Mains and/or Sewers are increased in size beyond that required to satisfy the minimum design for a specific Development. This may be to facilitate future development and is deemed Network Reinforcement.

**Water Company** – means a company holding an appointment as a water or sewerage undertaker under the Water Industry Act 1991.

**Water Efficiency Incentive** – means, where offered, a reduction in infrastructure charges to a Developer Customer where they evidence that a Development will or does meet a stipulated threshold for reduced water consumption, as defined in the Water Company's Charging Arrangements and/or specific environmental policies.

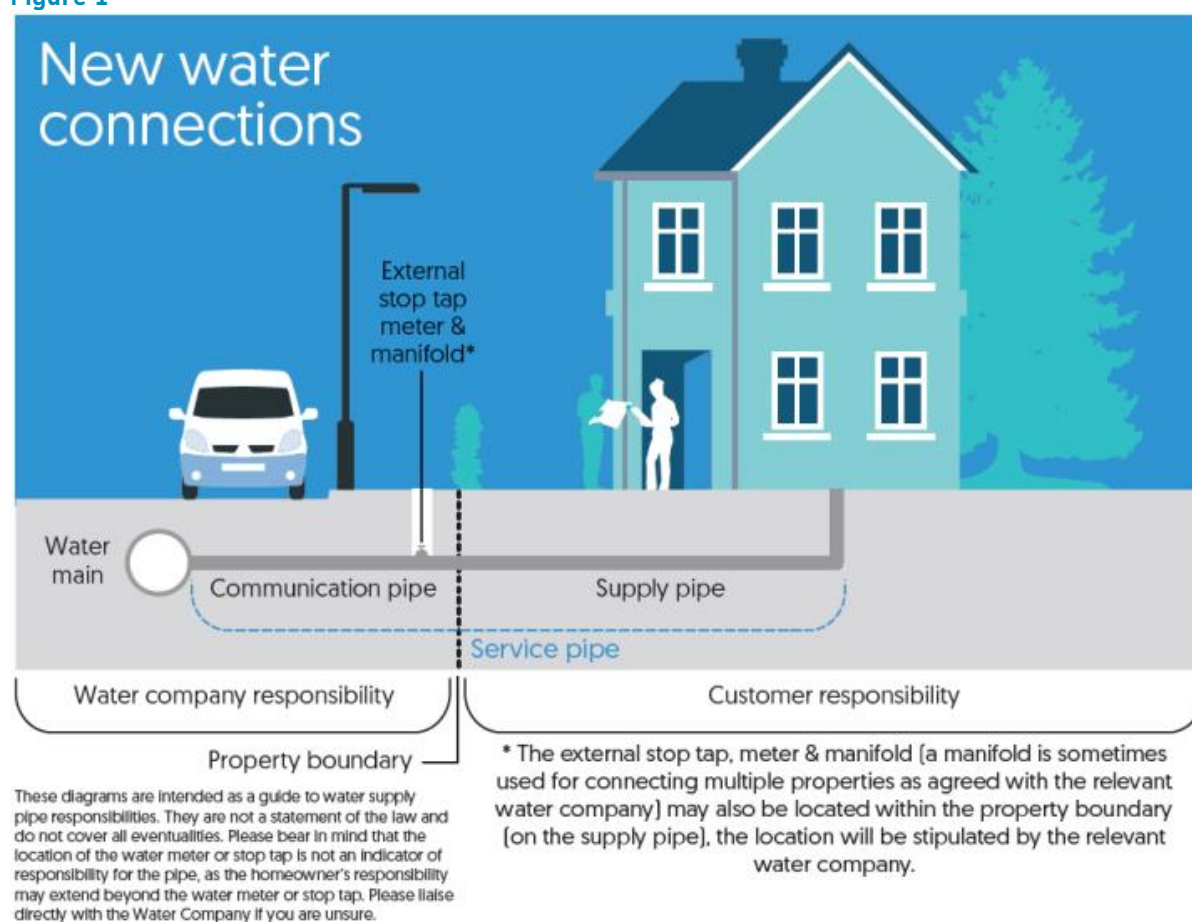
**Water Industry Registration Scheme (WIRS)** – means the scheme operated by Lloyd's Register EMEA on behalf of Water UK and its members, which certifies the competence of companies undertaking Self-Lay, or such other scheme as replaces it from time to time.

**Water Regs UK** – means the company responsible for running the Water Industry Approved Plumber Scheme (WIAPS) on behalf of the water industry in England and Wales, formerly provided under the Water Regulations Advisory Scheme. The company promotes compliance with the Water Fitting Regulations 1999 and other relevant standards across the UK to protect customers.

**Water Regulations Advisory Scheme (WRAS)** – means a compliance mark that demonstrates that an item or product complies with standards set out by Water Supply (Water Fittings) Regulations 1999.

**Water Sector Guidance** – means guidance documents published in accordance with Ofwat's Code for adoption agreements, relating to the adoption of water assets and available at <http://www.water.org.uk/water-sector-guidance-approved-documents/>.

Figure 1



# Appendix 1 – Exceptions to standard charging

Due to the nature of development works, there are circumstances where the cost incurred by companies is affected by external factors. These external factors may be outside of the immediate knowledge or control of the water company and, in a limited set of exceptional circumstances, could lead to significant cost variance. For this reason, Ofwat has agreed that companies are not required to provide fixed upfront charges in respect of the following:

1. Diversion works (see s185 of the Water Industry Act), and;
2. Water and sewerage infrastructure work requested by the developer (see S41 and S98 of the Water Industry Act) where “it would be unreasonable to expect an undertaker (i.e. Water Company) to do so.”

For standard water and sewage connections no such exception applies, and these must therefore be subject to fixed charges.

In principle, having consulted stakeholders, water companies consider that in the following circumstances, it may not be reasonable for them to provide an upfront fixed charge for the work:

- a. The technical complexity of the work is high, or the type of work required is bespoke or carried out infrequently, or;
- b. Third parties can legitimately recover their costs from companies and there is not a reasonable level of certainty of those costs in advance of connection work being undertaken, or;
- c. Third parties have rights to protect their assets or interests in a way that affects the construction method. The third parties’ requirements are unknown upfront, or;
- d. The work is to be carried out on or close to land with particular environmental, historical or archaeological characteristics. These characteristics mean that specific measures are required during construction or reinstatement. The details of these measures may not be fully defined in advance of construction.

Where the above circumstances occur, companies will be unable to provide a fixed upfront charge for the entire works, and should provide a budget estimate comprising a mixture of:

- i. Indicative or estimated charges for the elements of works affected by the circumstances above, and;
- ii. Fixed upfront charges for the elements of the work where there is sufficient certainty, and it is reasonable to do so.

Water companies anticipate that there will be occasions where providing an indicative estimate is not possible or where the estimate will not meet the degree of confidence desired by the customer. In such cases, the parties will need to decide how to proceed.





## Any questions?

If you want to know more about our charges call us on **0800 707 6600**  
or email [new.connections@severntrent.co.uk](mailto:new.connections@severntrent.co.uk)  
and we'll be happy to help.

Severn Trent Water Limited  
Severn Trent Centre  
PO Box 5311  
Coventry  
CV1 2LZ

[www.stwater.co.uk/building](http://www.stwater.co.uk/building)

**WONDERFUL ON TAP**

