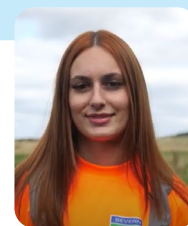


SWADLINCOTE, DERBYSHIRE

Reducing spills and
improving rivers

Here's Holly to talk about
what we did:
[Improvements in Derbyshire](#)



Whether you're a river user, live locally, or are simply interested in river health, you want to see more done to have healthy and thriving rivers. And so do we. We know we need to go faster and further to reduce our impact on rivers. We're doing more, faster than any other water company to reduce spills from storm overflows as quickly as possible.

In 2024, we made our biggest year of investment in river health. So far, our huge team of engineers has delivered **1,500 improvements** to cut spills from storm overflows right across our region. We already believe this work has helped to prevent thousands of spills in 2024 alone. Our teams have delivered an average of **34 enhancements** per week since June 2024, going faster and further than anyone else to reduce spills.

Local to you in Derbyshire

In the heart of Swadlincote, Derbyshire, at the Woodville Broomy Furlong treatment site, we've installed a non-return valve to improve our storm overflow management. The valve prevents water from flowing back up the pipe during storm events, reducing the chances of false spill detection. One of the key benefits of this innovation is that it helps protect our sewage treatment works and pumping stations from flooding. By keeping the system working as it should, we ensure fewer spills and better overall protection for both our infrastructure and the local environment.

Our ambitious plans mean we're spending a further **£2 billion** over the next five years to improve river health. And we're fast tracking the delivery of an additional **600 solutions, by autumn 2025.**

With all of this, we aim to reduce the use of storm overflows across the region.

Improving rivers and streams

Providing water and managing waste relies heavily on our teams and infrastructure to work around the clock. Heavy rain and storms can often overwhelm our network, and in 2024 the majority of the Severn Trent region experienced nearly **20%** more heavy rainfall days compared to 2023.

That's why we're committed to doing more, and in the years to come we will see storm overflow usage reduce, and in turn, healthier rivers and water ways.

But what does this mean for the local rivers and water courses?

Repton brook is a 12km long tributary of the River Trent. This small tributary rises near Woodville and flows through Repton on its lower reaches before it joins the River Trent. Adapted throughout its history, Repton Brook gives its name to many parts of Repton. Ensuring that the brook will not flow back into our network will reduce the likelihood of spills and protect the health of the brook.



To hear about how we are
improving our region's rivers,
please visit our [YouTube playlist](#).

To see how we are investing in your area, you can look at
our [storm overflow map to find out more](#).



WONDERFUL ON TAP