

WATER SUPPLY CHALLENGE

Once we have cleaned the river water we need to make sure it travels to all of the different places that need it! We store water in reservoirs and then send it through blue pipes to homes, schools and businesses!

Can you complete the water supply challenge?

Each place uses a certain amount of water every day so we need to make sure that the reservoir is the right size. It is your job to work out how big the reservoir needs to be using your maths skills!

Take a look at these places. Below them is the number of litres each place needs:

SCHOOL

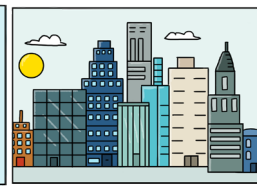
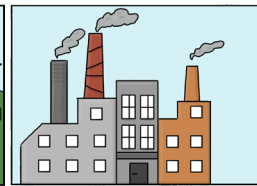
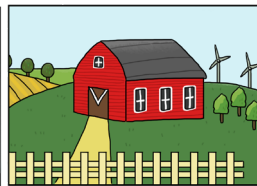
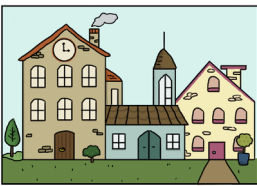
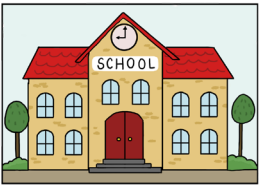
OLD TOWN

HOSPITAL

FARM

FACTORY

CITY



15

20

40

35

25

75

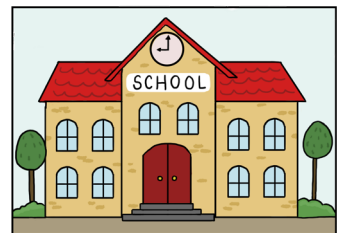
To work out how much water there needs to be in the reservoir you need to add up the litres for each place, the first one has been done for you:

SCHOOL

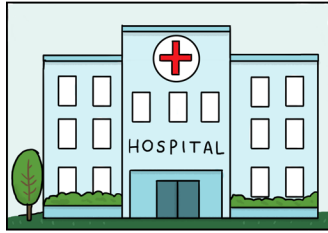
HOSPITAL

FARM

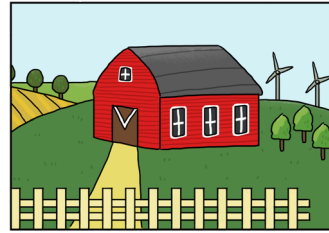
RESERVOIR



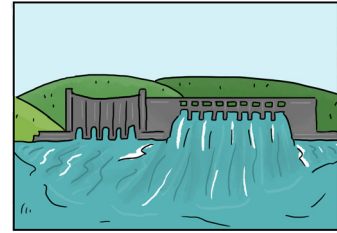
+



+



=



15

40

35

90 LITRES

FACTORY

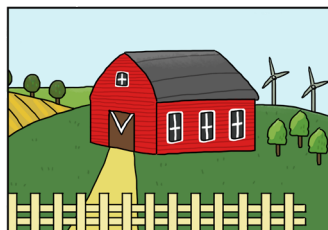
FARM

OLD TOWN

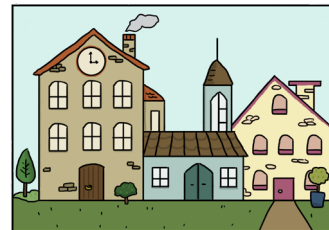
RESERVOIR



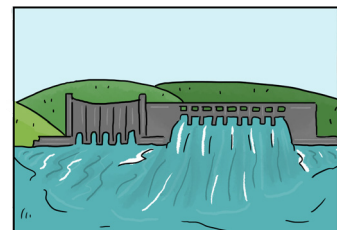
+



+



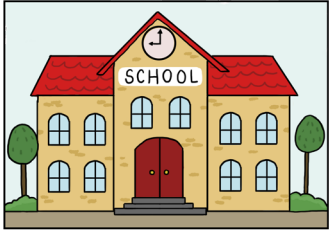
=



LITRES

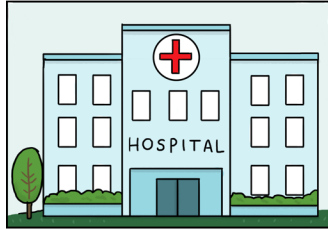
WATER SUPPLY CHALLENGE

SCHOOL



+

HOSPITAL



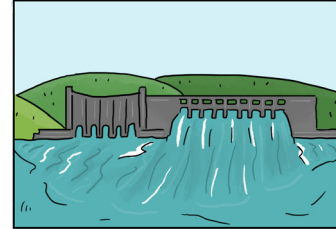
+

CITY



=

RESERVOIR



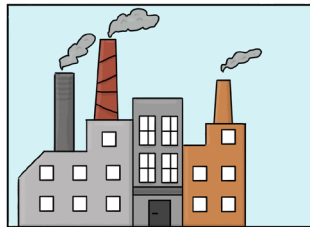
LITRES

CITY



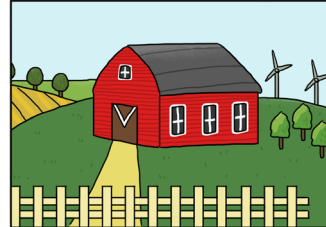
+

FACTORY



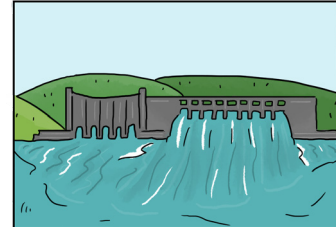
+

FARM



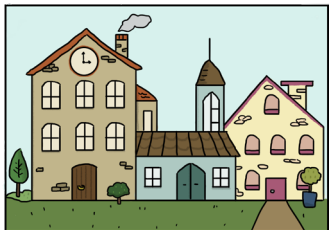
=

RESERVOIR



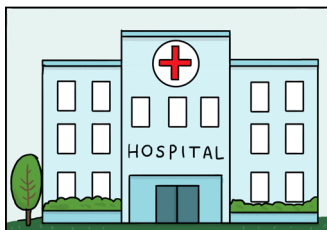
LITRES

OLD TOWN



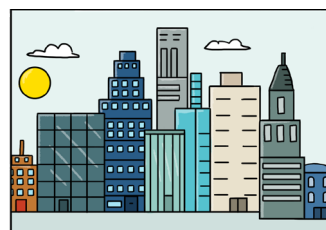
+

HOSPITAL



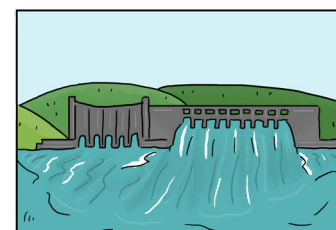
+

CITY



=

RESERVOIR

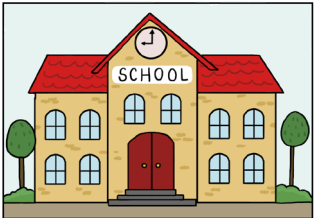

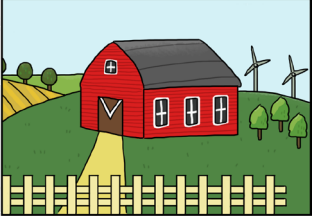
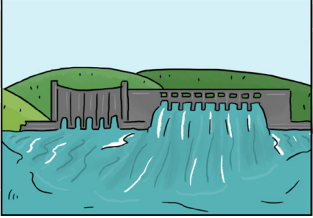
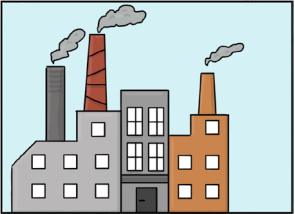
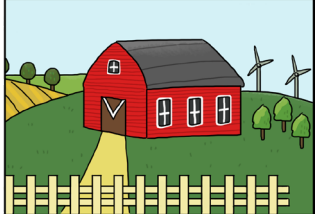

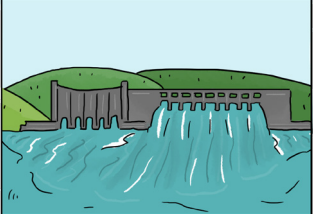
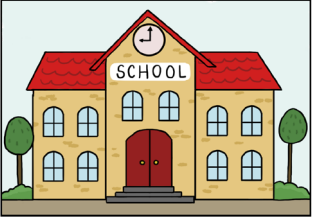


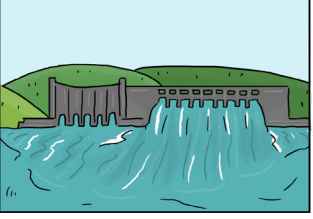

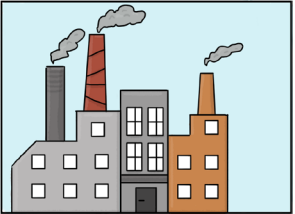
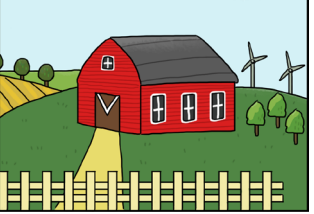
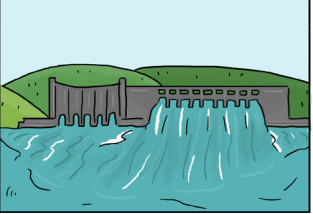
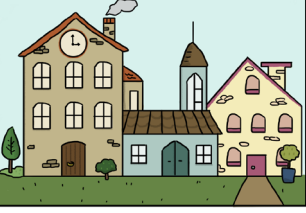


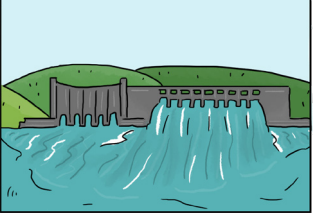


LITRES

Continue testing your addition skills by answering the following questions below:

1. The city has built 2 factories. How much water does the reservoir need now?
2. In the old town 3 new schools have been built. How much water does the reservoir need now?
3. A farm has been built next to a hospital in the old town. How much water does the reservoir need now?

WATER SUPPLY CHALLENGE ANSWERS

SCHOOL 	+	HOSPITAL 	+	FARM 	=	RESERVOIR 
15		40		35		90 LITRES
FACTORY 	+	FARM 	+	OLD TOWN 	=	RESERVOIR 
25		35		20		80 LITRES
SCHOOL 	+	HOSPITAL 	+	CITY 	=	RESERVOIR 
15		40		75		130 LITRES
CITY 	+	FACTORY 	+	FARM 	=	RESERVOIR 
75		25		35		135 LITRES
OLD TOWN 	+	HOSPITAL 	+	CITY 	=	RESERVOIR 
20		40		75		135 LITRES

1. $75 + 25 + 25 = 125$ LITRES 2. $20 + 15 + 15 + 15 = 65$ LITRES 3. $35 + 40 + 20 = 95$ LITRES