

# SEVERN TRENT COMMUNITY FUND

Annual Review  
2024/25



WONDERFUL ON TAP







Alone, we can  
do so little;  
together, we can  
do so much.



Helen Keller, author



## CONTENTS

A message from our CEO	4
Our year in numbers	6
A note from our Chair	8
Five years of our Community Fund	10
Project case study: People	12
Project case study: Place	14
Project case study: Environment	16
Birmingham and the Black Country	18
Chester	20
Derbyshire	22
Gloucestershire	24
Leicestershire and Rutland	26
Nottinghamshire and North	28
Shropshire	30
Staffordshire	32
Warwickshire and Coventry	34
Worcestershire	36
List of Community Fund awards 2024/25	38
Get River Positive projects	40
Governance	42



## A MESSAGE FROM OUR CEO

It's now five years since we made our promise to support the communities we serve, by donating more than £10 million between 2020 and 2025. As I write this, I couldn't be prouder that these five years have seen us support almost 900 not-for-profit organisations to the sum of just over **£11.6 million**.

Each of these good causes make a positive difference to the lives and well-being of local people every day. In fact, we believe the support from the Severn Trent Community Fund has benefited somewhere in the region of 6 million Severn Trent customers since 2020.

In the last year alone, we've awarded **£2.02 million** to 113 fantastic projects and charities in the Severn Trent region, benefiting almost 600,000 Severn Trent customers between them.

As well as our customers and the communities where they live, the health of rivers and streams remains one of our top

priorities. Alongside our own ongoing work to help reduce our impact on waterways, we've also supported a further seven projects working in and around rivers this year.

It remains a challenging time for many charities, especially smaller ones working on local issues. With increasing demands on their services, continuing uncertainty about income, and rising running costs, it's a gloomy picture for many. That's why we decided to branch out from funding specific projects to also cover core operating costs, and this remains an important source of support, helping many organisations keep doing what they do best.

When I hear about groups doing what they can to improve the lives of people in their neighbourhoods, I am truly inspired, and I hope you feel the same as you read the stories in this report. Day by day, they are helping make our region a better place to be, and I'm delighted we can help them to make this happen.



Coventry Peace House

Liv

Liv Garfield,  
Chief Executive,  
Severn Trent

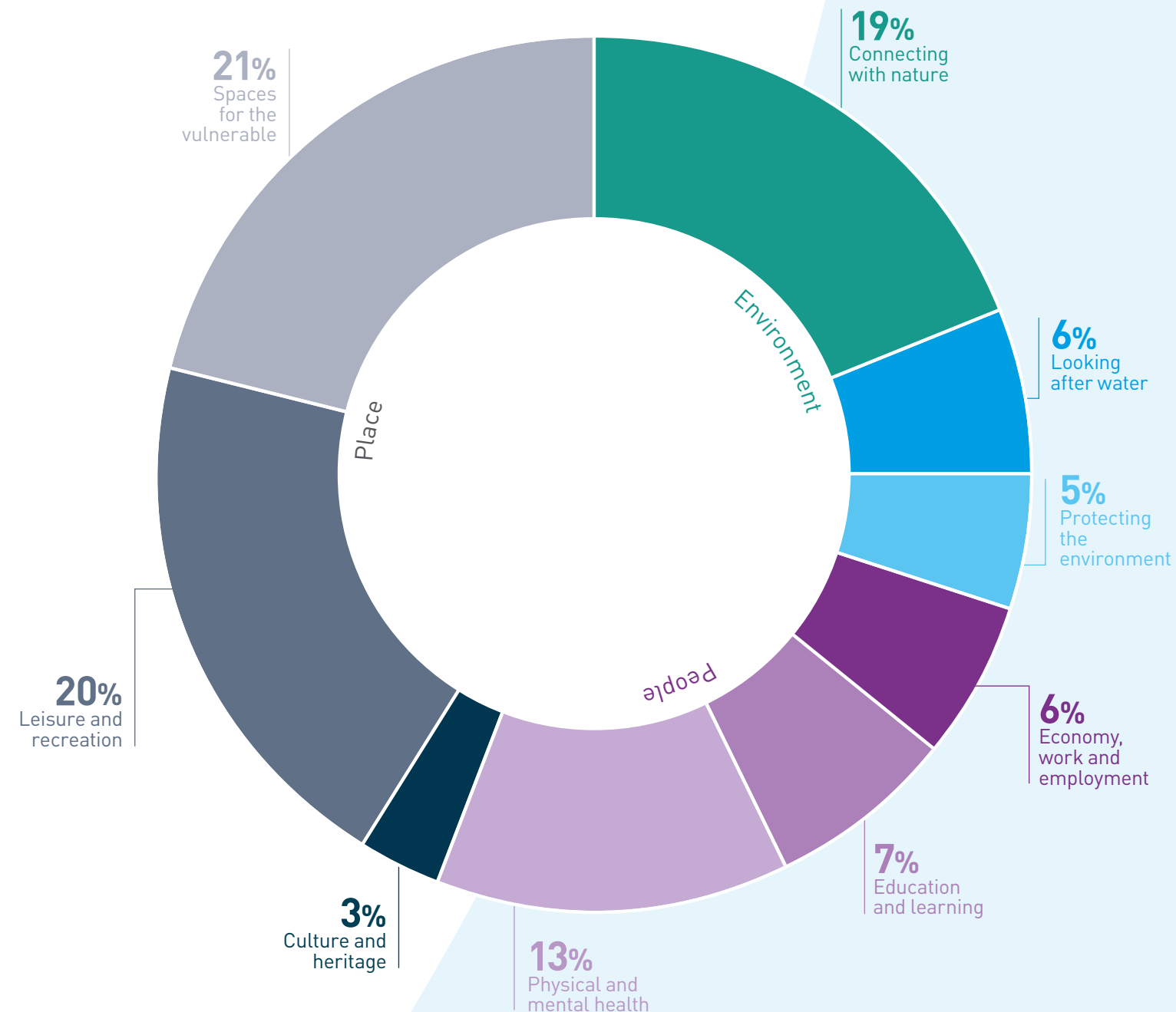




# OUR YEAR IN NUMBERS



○ Funded projects and organisations across the Severn Trent region



**Over £1.6 million**  
awarded to 86 projects

**£399,092**  
awarded to 27 organisations  
to support core funding



**598,440**  
beneficiaries\*



**89** Community spaces  
created or enhanced\*

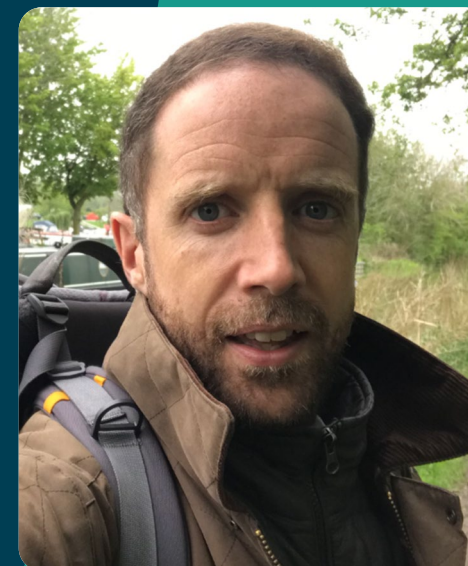
**205,870m<sup>2</sup>**  
of environment improved\*



**£381,560**  
awarded in 10-20% most  
deprived communities

\* Based on predictions from submitted applications and completed reporting





## NOTE FROM THE CHAIR

Five years ago, Severn Trent established a pioneering Community Fund in response to pressures our society was facing. From the climate and nature crisis to the rising cost of living; people, communities, and the environment were under increasing pressure. The Community Fund stepped forward to support grassroots initiatives in our communities that were providing a lifeline for people, place, and the environment.

Over the coming years the number of applications for help we saw showed just how important the funding support was to projects that needed it. This year, the final year of the initial five-year fund, has been another remarkable one. We have continued to see the lasting impact of past projects and heard powerful stories from individuals determined to make a difference where they live. The Fund remains dedicated to supporting grassroots initiatives local causes

that address the most pressing issues affecting communities across the region and I've found it personally inspiring to see the impact of the funding for the organisations and projects we have worked with.

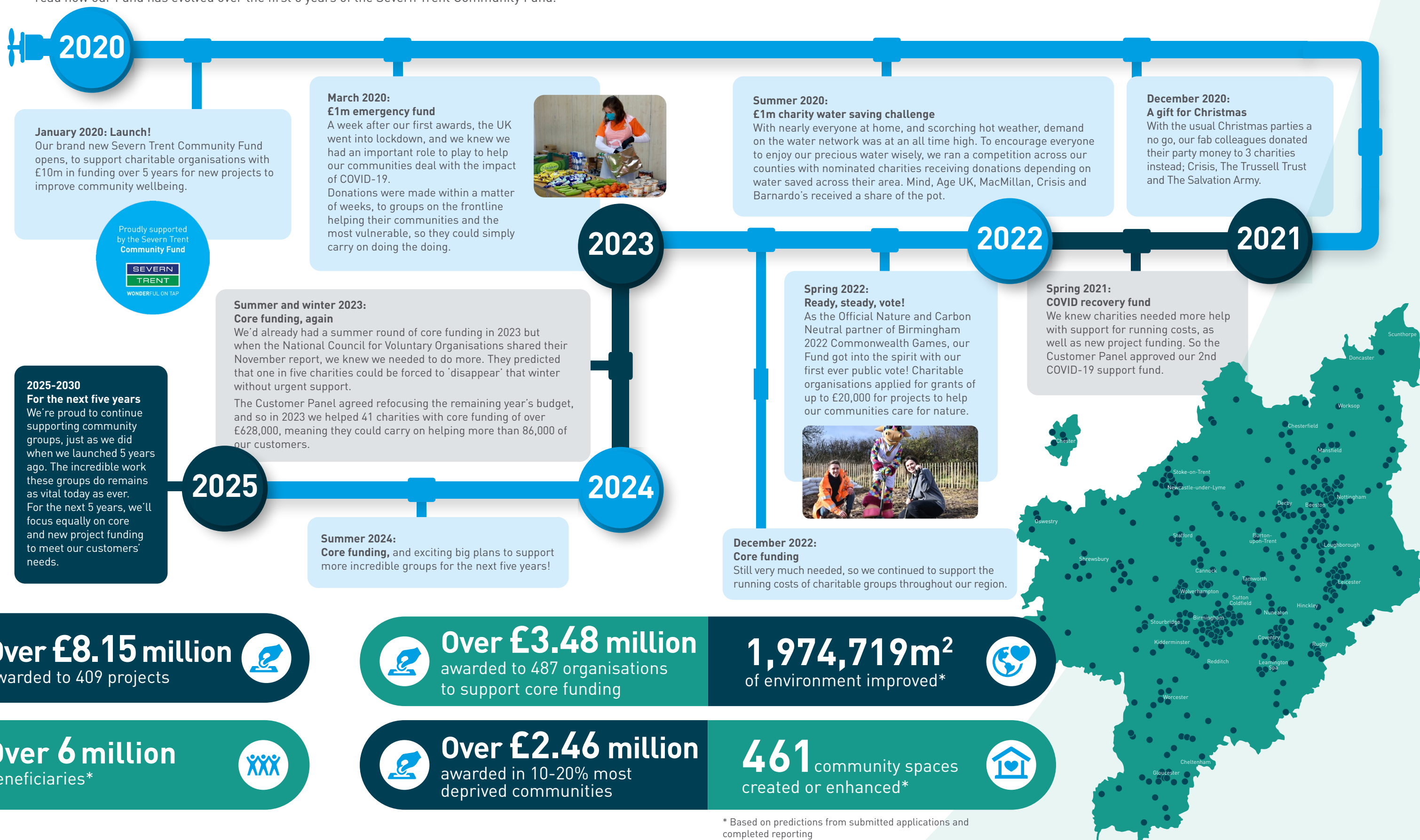
On behalf of the outgoing Severn Trent Customer Panel, I would like to say a big thank you to the organisations we have been able to support. We have felt honoured to play a small part in supporting the impact you are delivering and the legacy of what you are doing will live on into the future. For anyone reading this report who is new to the Severn Trent Community Fund I would encourage you to read on, be inspired by the stories and the impact over the last five years and then consider how the Community Fund might be able to support your organisation or project in the future!



# FIVE YEARS OF OUR FUND

## Adapting to meet the needs of our communities

Our customers, and the communities we live and work in, are at the heart of everything we do. So, when the needs of our communities change, our Fund has too! Take a trip down our memory pipe to read how our Fund has evolved over the first 5 years of the Severn Trent Community Fund.







## PROJECT CASE STUDY: PEOPLE

Projects that support healthier lifestyles and skills development

### Read Easy Birmingham North, Tamworth & Lichfield - Read Easy start up Awarded £2,500

Recent data shows that more than 22% of adults aged over 16 in the UK have little or no formal qualifications. The areas covered by Read Easy Birmingham North, Tamworth and Lichfield match, and in some cases exceed, this national average.

A self-funding organisation affiliated to Read Easy UK, the group offers free confidential 1:1 coaching for adults who struggle to read. Run solely by volunteers, any funds they receive are used to train coaches, buy training manuals and reading books, and cover volunteers' expenses.

Many studies show that people who can read have a much stronger chance of getting a better job, improved mental health and increased self-esteem and confidence. So the work Read Easy does in its local community really has the potential to make a long-lasting and life changing impact.

Our funding helped with their initial set up costs, such as training coaches, DBS checks, readers' manuals and books. Each new reader receives tailored support, their own manual and, together with a library of reading books, can work at a pace that's comfortable to them.



Before setting up the group I spoke with other local support groups, social prescribers, employers, doctors, foodbank and council services to confirm there was a definite need in this area.

Lisa Thomas, Treasurer







## PROJECT CASE STUDY : PLACE

Projects that help to create better places for communities

### Canaan Trust - Aspire Community Support Hub

Awarded **£53,000**

Since 1995 the Canaan Trust has been listening, supporting and caring for the homeless and vulnerable in Derbyshire and Nottinghamshire, serving communities that rank in the top 10% most deprived nationally.

The Trust has a strong track record of helping individuals or families who may be homeless, in danger of becoming homeless, or in need. As well as accommodation, they provide help and advice on issues ranging from debt and benefits, to concerns about food and fuel.

The charity currently accommodates 12 men aged 18 to 70 at any given time in two houses, and is currently renovating a property to house homeless females, to meet growing demand. Individual females presenting as homeless can be extremely vulnerable, and emergency accommodation can often be mixed-sex and unsuitable.

Our Community Fund award will help the Trust to further develop their Community Support Hub in Long Eaton. The Hub will provide vital facilities to improve wellbeing, including family access facilities, counselling, an extensive range of life-skills and employability skills, and emergency accommodation.

In addition, the new Hub will offer space for professional social welfare support services to operate for the whole community, including debt, benefits, housing crisis, food and fuel poverty support, plus distribution of food parcels. There will also be support for current street homeless people, such as showers and clothes laundry.

The Trustees at Canaan recognise that no one chooses to be homeless. They remain determined to support those that call on their help, 24/7, 365 days a year.



We aim to provide a holistic approach to supporting people living with homelessness, who may be at risk of becoming homeless, or in need of help.

The grant from the Severn Trent Community Fund is absolutely instrumental in helping us to achieve this ambition and ensure we can support as many people as possible.

**Kevin Curtis,**  
Project Manager







Photo credit - Nic White

## PROJECT CASE STUDY : ENVIRONMENT

Projects that look after our natural environment, rivers and water.

### Warley Woods Community Trust - Healthy Hedges

Awarded **£2,059**

Warley Woods is a beautiful historic grade 2 listed parkland created by Samuel Galton Junior, which was saved for the community's use by Edwardian philanthropists as a public park back in 1906. The local community then stepped up once more, in 2004, and Warley Woods Community Trust has been managing its green space since then, taking full responsibility for its 100 acres of parkland, woodland and golf course.

The site has achieved Green Flag status for the last 16 years and its community members have voted it ten times into the list of the UK's favourite parks. While it's known for its trees - over 4,500 of them - where Warley Woods is lacking for nature is in that middle height of planting. Caring for their current small number of hedges and extending them is a very important part of ensuring space for biodiversity.

Our Community Fund award supported a project to rejuvenate an existing hedgerow and plant new areas of hedge which will create a properly secured boundary to one of the site's key areas for wildlife. It will use hedging species to encourage butterflies and moths by introducing caterpillar-friendly food plants, like wychelm, alder buckthorn, blackthorn, wild privet and honeysuckle.

As a space that is already important to the health and wellbeing of local people living in an urban environment, this enhancement will make Warley Woods a paradise for nature, too.



The Healthy Hedges project has allowed us to equip our dedicated volunteers with the hedgelaying skills (and tools) they will need to help us to manage our hedgerows for wildlife for years to come. This heritage craft creates vigorous growth which provides food and shelter for so much wildlife, and we've made a cracking start laying the hedgerow bordering The Wilderness. We've boosted the hedges biodiversity with different species that are great for butterflies, moths and other pollinators. Thanks to Severn Trent for making the Healthy Hedges project a reality!

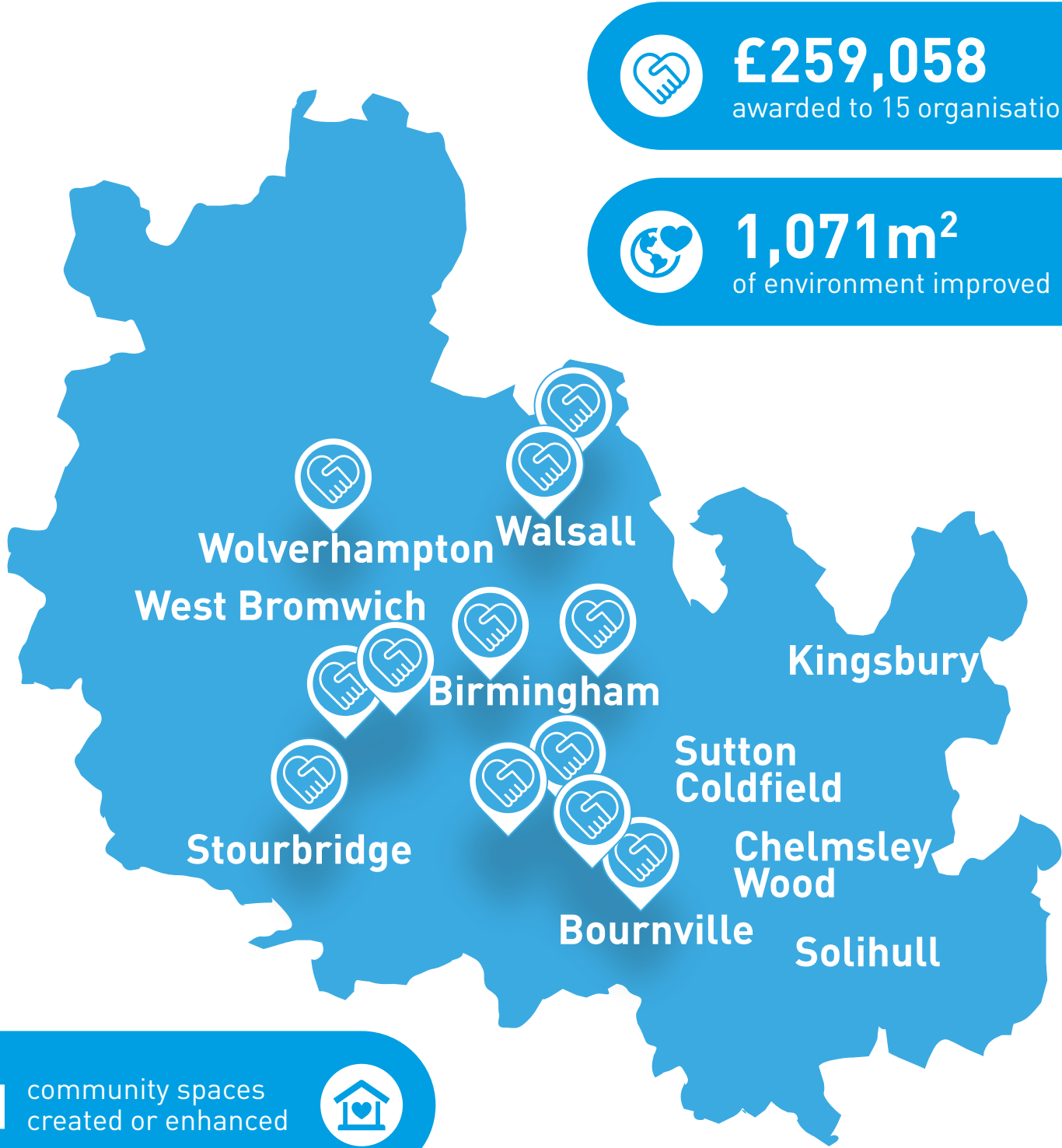


**Doug Barber,**  
Conservation Manager





# BIRMINGHAM AND THE BLACK COUNTRY



 **£259,058**  
awarded to 15 organisations

 **1,071m<sup>2</sup>**  
of environment improved

**11** community spaces  
created or enhanced 

**128,535**  
beneficiaries 



**CORE**

## BIRMINGHAM SAYS NO CIC

Awarded **£20,000**

This multi award-winning cause aims to tackle the pressing issues of knife crime and youth violence across the West Midlands. To do this it looks at root causes by engaging with young people and supporting vulnerable youth populations.

Based at Handsworth Park Cricket Club, Birmingham Says No offers a welcoming space for everyone. Alongside combating knife crime, the campaign also supports those living with drug or alcohol addiction, homelessness, domestic violence or mental health issues. Their services include in-person counselling, workshops, and support groups, along with online mentoring and counselling via Zoom and Teams. They engage with schools and youth centres across Birmingham and the wider West Midlands.

Our Community Fund grant will help the group with its core costs, such as rent, professional salaries and volunteer expenses, meaning they can concentrate on continuing the great work they've done so far.



## NEW BUSHBURY TRIANGLE COOPERATIVE - GARDENING CLUB

Awarded **£2,000**

The Bushbury Triangle Estate in Wolverhampton was part of a 149-home development built by a housing developer and several housing associations from 2015 onwards. The co-operative group helps organise and deliver services for residents through a community resource centre.

Local people can benefit from a range of activities and support services, including mental health support, community room hire, councillor surgeries, supported use of a computer, and telephone link with Wolverhampton Homes and the City Council. To help combat loneliness and isolation, the centre also runs a number of evening events, provides free breakfast on Fridays, operates a warm space during the winter, and coach trips over the summer months.

The co-operative wanted to build a space at the rear of their centre for a children and young persons' gardening club. There will be a sensory garden, with fragrant herbs and scented flowers, wind-chimes, lights and water features.

They've also been gifted some land for strip allotments across the road, too. And with a new greenhouse they'll be showing young people how to propagate from seeds, cuttings and division, helping them learn about soil preparation and management and the importance of nature.





# CHESTER



**£21,530**  
awarded to 2 organisations



**300m<sup>2</sup>**  
of environment improved

**2** community spaces  
created or enhanced



**1,360**  
beneficiaries



## FRIENDS OF SANDY LANE PARK - RIVER VIEW REVITALISATION

Awarded **£9,500**

Sandy Lane Park sits at the heart of this community in Chester, on the banks of the River Dee. The Friends have committed to preserving and enhancing the park, creating a welcoming, inclusive and sustainable green space for residents.

Since forming in 2024, the Friends have been successfully leading groups of volunteers to maintain the park's natural beauty while keeping it accessible to everyone. They've been working with local schools, businesses and Cheshire West and Chester Borough Council to develop projects that give opportunities for outdoor recreation, engaging with nature and improving community wellbeing.

Our grant will help them with the River View Revitalisation Project, which focuses on a key area of the park. They will transform the river view steps into a vibrant seating area, clearing and repairing the steps and commissioning a local artist to design and paint a nature-inspired mural. The aim is to create a calm, inviting space that encourages people to sit and connect with the river.

At the same time they're looking to the long term and are building a secure storage unit for volunteers' tools and equipment – making sure they can keep the park in tip-top condition for years to come – and two interpretation boards to help visitors understand the park's cultural and environmental significance.

PROJECT

## CC HUB CIC - THRIVING TOGETHER

Awarded **£12,030**

Crossroads Community Hub provides a wide range of support services to families and individuals in and around Chester. The Hub has been running since 2020, with a dedicated focus on addressing food insecurity, financial stability and community cohesion.

Through its varied initiatives, Crossroads Community Hub continues to serve, by providing food, friendship, and hope to those facing hardship. This includes the Greenway Grocer, giving people access to affordable, nutritious food and emergency food parcels for those who need them. The Hub's Meeting Place Cafe offers a warm space where visitors can enjoy hot drinks, connect with others, and access support services.

The funding from Severn Trent Community Fund means the Hub's Debt Advisor and Empowerment Worker can now expand their reach, by providing an extra two days a week of debt advice and budgeting support. Helping people get a plan in place to manage debt will improve their wellbeing, provide emotional relief, give a sense of control, reduce stress and help improve their family relationships.





# DERBYSHIRE

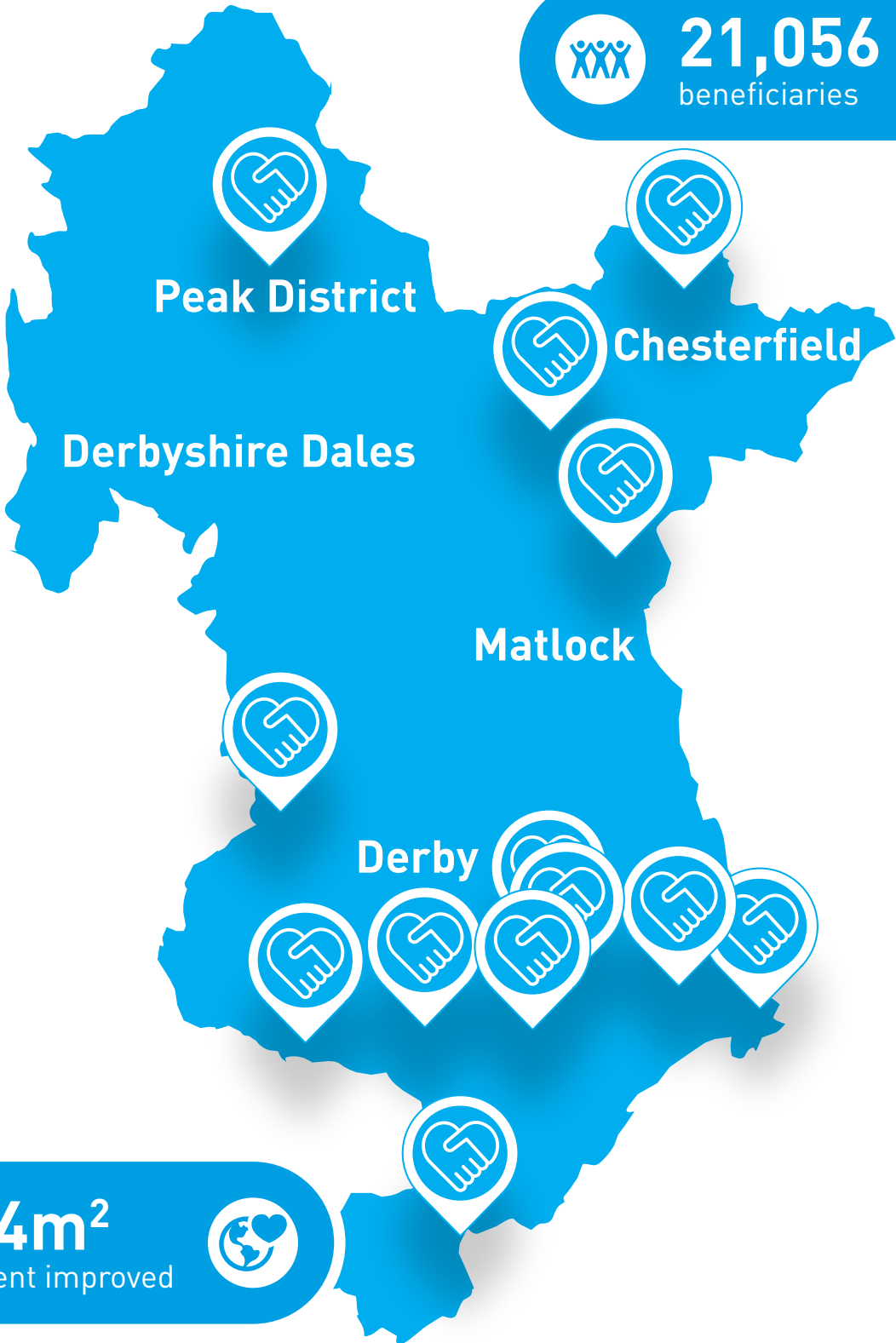
**£261,377**  
awarded to 13 organisations



**16** community spaces  
created or enhanced



**21,056**  
beneficiaries



**34,424m<sup>2</sup>**  
of environment improved



CORE

## CLAY CROSS FOODBANK

Awarded **£14,991**

Since 2012 Clay Cross Foodbank has been helping people in crisis in and around this former mining town in North East Derbyshire. The foodbank typically provides three days of emergency supplies to people referred to them by care professionals and other agencies. They also provide financial inclusion services to anyone using the foodbank, in partnership with Citizens Advice North East Derbyshire. Our funding will help them to cover their necessary running costs, such as rent and other charges for their warehouse space, so they can continue to be a pillar of support for those who need it.



## EDALE MOUNTAIN RESCUE - MEDICAL EQUIPMENT

Awarded **£24,575**

The third-busiest mountain rescue team in England and Wales, Edale Mountain Rescue cover 600 km2 of moorland, gritstone edges and valleys at the heart of the Peak District. None of the regular emergency services have the vehicles, equipment, personnel, or capacity to carry out the work they do. The team has the skills and experience to give high-quality medical treatment and transport injured casualties safely across rough terrain. Our grant has purchased vital medical equipment to help them to support the most critically injured patients, providing pre-hospital care, saving lives and improving outcomes. The team helps communities to access the beauty on their doorstep, giving local people the confidence to access the outdoors.





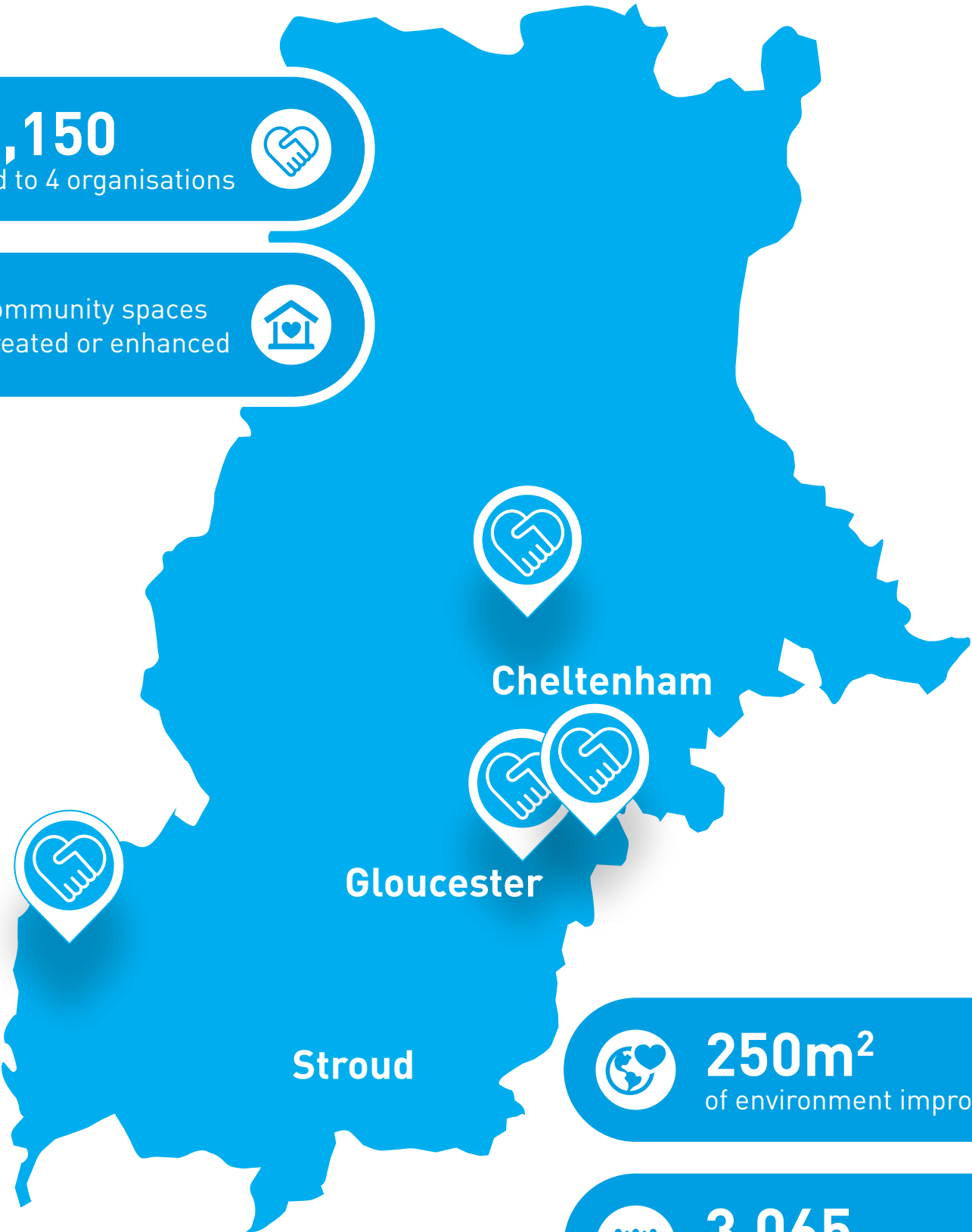
# GLOUCESTERSHIRE

£45,150

awarded to 4 organisations



3 community spaces created or enhanced



250m<sup>2</sup>

of environment improved



3,065

beneficiaries



CORE

## FRESH HOPE

Awarded £19,720

Based in Cheltenham, Fresh Hope is an ‘umbrella’ charity that runs a number of different projects supporting the local community. They aim to bring people together, making them feel welcome and accepted.

Among the projects Fresh Hope runs is a community café serving high-quality products at an affordable price to local people, a ‘family pantry’ offering low-cost access to essentials, and sessions to help families connect and support each other.

An important part of the Fresh Hope approach is that the projects offer employment opportunities to young people in partnership with a ‘help to work’ scheme for those facing barriers to employment.

Our Community Fund award has helped cover some of the costs of running their projects - including their popular community lunches - meaning Fresh Hope can continue bringing joy to local people in the future.

## GREAT OAKS HOSPICE - REFLOORING

Awarded £15,746

As the only hospice in the Forest of Dean, Great Oaks has more than 20 years’ experience in offering care to those living with life-limiting illnesses, together with their families and carers.

All their care is free of charge and tailored to individuals’ needs and circumstances, offering a range of services including Hospice@ Home, complementary therapies, wellbeing, counselling and bereavement support.

The Hospice asked our Community Fund for help following a recent audit which highlighted issues with the flooring in the area of the Hospice where they provide most of their care services. We helped them to replace their flooring with washable materials to help them manage and control infection related risks for everyone who uses the building.





# LEICESTERSHIRE AND RUTLAND



**£360,919**  
awarded to 16 organisations



**31,322**  
beneficiaries



**89,120m<sup>2</sup>**  
of environment improved



**13** community spaces  
created or enhanced



**CORE**

## COMMUNITIES FOOD AND WELLBEING HUB

Awarded **£20,000**

Working out of two hubs in Leicester and Loughborough, Communities Food and Wellbeing Hub (CFWH) was set up to support diverse communities in need. Their services include education and training, family food packages, and ongoing support for the over 65s or for those living with chronic disease.

Service users can benefit from a wide range of benefits, delivered with the help of qualified health professionals and dedicated volunteers over the two sites. Our core funding award will help the Hub with its ongoing costs, such as venue hire, storage costs, salaries and accountancy fees. It all helps to make sure local people can continue to improve their own wellbeing and that of the communities around them.

**PROJECT**

## SWANNINGTON HERITAGE TRUST - BUILDING FOR THE FUTURE

Awarded **£86,642**

Swannington has a history of coal mining, horse-drawn tramways, and the first steam railway in the English Midlands. The Swannington Heritage Trust is a registered charity and over the past 40 years they have acquired several sites of industrial heritage interest.

To help protect and preserve the ecological and industrial history of the area, the Trust is keen to continue to attract visitors. Our grant has helped them with their plans to build a new workshop and stores outbuilding, with volunteer space and toilets. They also intend to extend one of their existing buildings to provide more exhibition space, with meeting areas and improved visitor facilities.

We're looking forward to seeing Swannington Heritage Trust go from strength to strength, with visitors from far and wide able to enjoy a wider range of events in well-maintained spaces. The new buildings will also help volunteers to improve their own skills, giving them even more of an opportunity to add value to this fascinating site for years to come.





# NOTTINGHAMSHIRE AND NORTH

£308,443

awarded to 23 organisations



256,961

beneficiaries



31,679m<sup>2</sup>  
of environment improved



19 community spaces  
created or enhanced



CORE

## WATERSAFE UK SEARCH & RESCUE TEAM

Awarded £14,000

A volunteer-led search and rescue organisation, for more than 15 years Watersafe UK Search & Rescue Team (WUKSART) has served the East Midlands by giving support to the Fire Service, Police and other blue light services. The team responds locally and nationally for incidents such as flooding, adverse weather, evacuation, missing persons and underwater search operations.

With their services increasingly in demand, we were delighted to be able to help WUKSART with their general running costs such as rent, utilities and training so they can continue the great work they do, both in the Midlands and across the UK.

PROJECT

## NORTH LINCOLNSHIRE CHILDREN'S LITERACY TRUST - CHILDREN'S LIBRARY CREATION

Awarded £34,021

In the busy market town of Epworth, North Lincolnshire the Trust is helping to develop a community of readers. And with our Community Fund grant, they've been able to create a brand new library space for local people.

A fifth of all children in England, and close to a third of disadvantaged children, are unable to read well when they leave primary school. This prevents them from achieving their potential in secondary school, and beyond, which can create obstacles to long term prospects

The grant has gone towards a brand new children's library in Epworth at Live Well Isle of Axholme, a vital centre that serves the local community and those slightly further afield.





# SHROPSHIRE

**£130,732**  
awarded to 7 organisations



**9,511m<sup>2</sup>**  
of environment improved



**85,526**  
beneficiaries



**5** community spaces  
created or enhanced



CORE

## CHALLENGING PERCEPTIONS

Awarded **£12,231**

Advancing the life skills and supporting the needs of young people living in Telford and Wrekin, Challenging Perceptions has a particular focus on young people experiencing poor mental health. The organisation works in a highly deprived area, coupled with higher local SEND and mental health needs.

Children, young people and their families can access a range of services designed to improve their quality of life, and activities focused on supporting their mental health and emotional wellbeing. These include youth support groups, SEND parent and toddler groups, wellbeing drop-ins, a sensory room, winter warm packs, social groups, cooking classes and advocacy and befriending support.

The charity aims for a future where we all grow mentally stronger, and with our grant award helping cover some of their core running costs, we look forward to seeing them continuing to make a positive difference to the many local young people they support.



## THE ROBERT JONES AND AGNES HUNT ORTHOPAEDIC HOSPITAL CHARITABLE FUND - ALICE GARDEN

Awarded **£60,565**

A Centre of Excellence in orthopaedic surgery, care and recovery, the Robert Jones and Agnes Hunt Orthopaedic Hospital (RJAH) serves a large area of the UK from its Oswestry home. Since 1996 the RJAH Charity has been supporting the hospital by providing vital additional resources and facilities to support the hospital in its work, to enhance the patient experience and the welfare of its staff.

Their dedicated children's unit, the Alice Ward, provides specialist advice, diagnosis and treatment for children between 0-18 years with bone, joint and muscular disorders and a wide range of conditions, including cerebral palsy and muscular dystrophy.

Our Community Fund grant will help RJAH in their current project to build its 'Garden for Alice,' a 511m2 space designed to be a therapeutic sensory space for paediatric patients and their families. With wide, level paths, raised planting and rain gardens, the garden will be safe and accessible for everyone, offering a place of peace and tranquillity.





# STAFFORDSHIRE

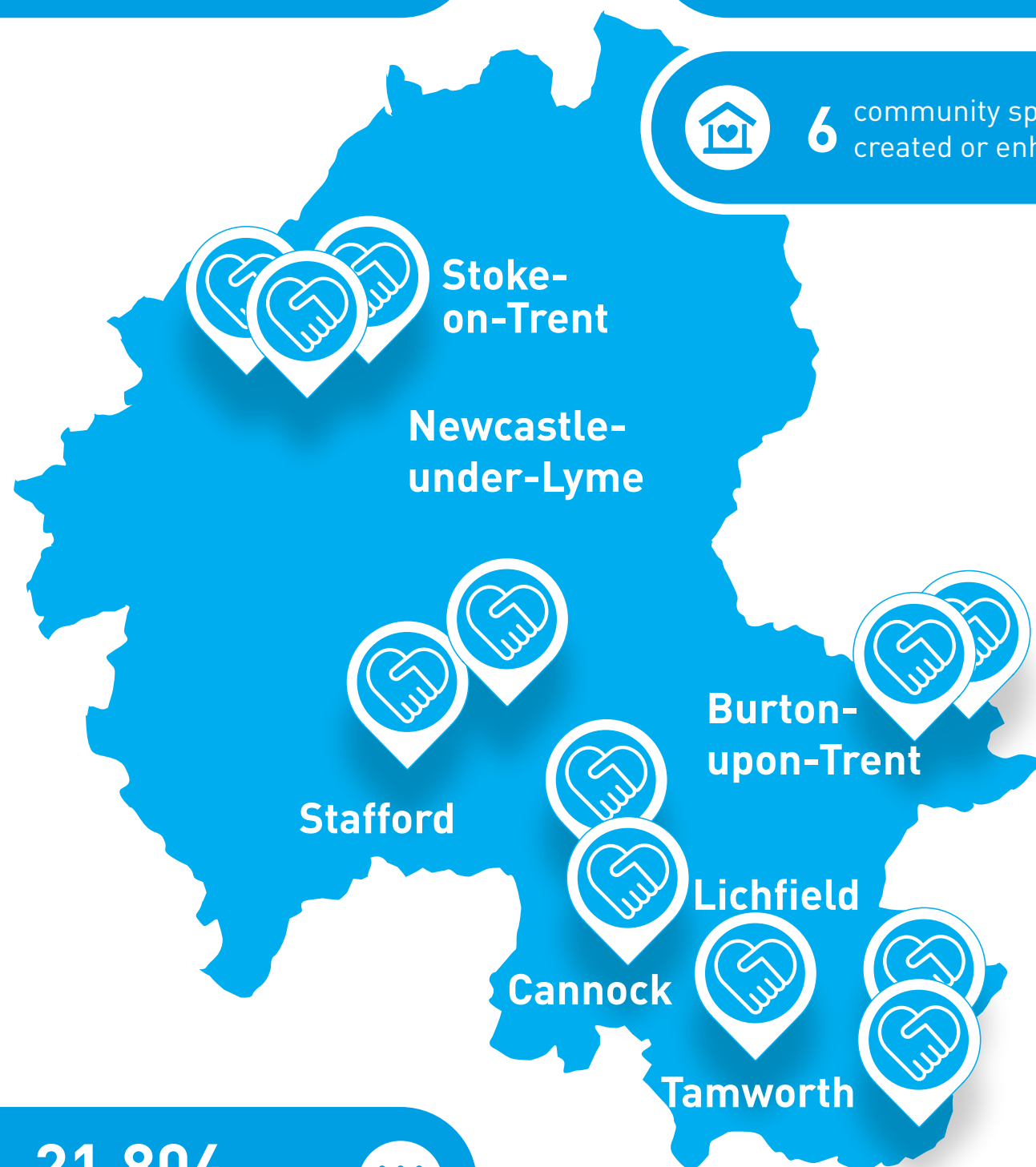
**£197,247**  
awarded to 12 organisations



**750m<sup>2</sup>**  
of environment improved



**6** community spaces  
created or enhanced



**21,804**  
beneficiaries



**CORE**

## STAFFORDSHIRE NETWORK FOR MENTAL HEALTH

Awarded **£18,942**

For more than 20 years, Staffordshire Network for Mental Health has been helping to improve the quality of life for people in the region who are at risk of poor mental health.

They aim to tackle mental health issues head-on by giving people a better understanding of managing their own mental health and wellbeing. Their main service is an Emotional Wellbeing 'Toolbox', delivered as a one-to-one or group session with a trained advisor, who explores the specific mental health needs of each person. They provide a listening ear and advice, draw up a self-help plan, identify barriers and gaps in an individual's current support and help them find other support services. For those requiring further assistance, their 'Journey to Wellbeing' programme offers continued support, helping people build resilience and sustain positive mental health.

Our Community Fund grant will help them cover some of their core running costs, such as rent, staff salaries and IT costs, allowing them to continue to support local people.

**PROJECT**

## CLAYMILLS PUMPING ENGINE TRUST - VISITOR FACILITIES

Awarded **£54,000**

Claymills Pumping Station was built in 1884-85 at Burton-upon-Trent to process the brewing effluent from what had become the country's largest brewing town. After some 20 years of inactivity, in 1993 the Claymills Pumping Engine Trust took over responsibility for the engines and the Grade II and II\* buildings.

This volunteer-led charitable trust has over the last 31 years restored the entire site, together with its huge beam engines and original boilers, and now have around 5,000 visitors a year. They keep their entrance fees as low as they can, with children going free, to maximise accessibility.

While they are rightfully proud of their museum, the Victorian buildings do not provide proper facilities for visitors, and can not be converted. Our grant will enable Claymills to fit out their new visitor centre. With a professional-looking welcome area, shop, café and toilets, the Pumping Station will be ready to welcome families, schools and steam enthusiasts for generations to come.





# WARWICKSHIRE AND COVENTRY

**£281,041**  
awarded to 12 organisations



**29,165m<sup>2</sup>**  
of environment improved



**9** community spaces  
created or enhanced



**29,913**  
beneficiaries



CORE

## COMPASSIONATE KENILWORTH

Awarded **£5,228**

A charity dealing with social isolation and cost-of-living issues, Compassionate Kenilworth originated from a Covid support group established during lockdown.

By closely mapping needs in their community and identifying gaps in provision, the group has been able to organise a range of activities, including social groups, clubs, warm hubs, technology drop-ins, school breakfast provision and dementia support.

The group continues to support hundreds of vulnerable people in the area and our funding will help them to cover ongoing costs, allowing them to support into the future.



## WARWICKSHIRE WILDLIFE TRUST - FRIENDS OF DIAMOND WOOD

Awarded **£52,493**

Warwickshire Wildlife Trust is the leading independent conservation group for Warwickshire, Solihull and Coventry. One of the organisation's key aims is to engage with local people to make more space for nature.

Our funding will help them to set up a new group – the Friends of Diamond Wood. The group will take an active role in caring for and managing the woodland in the country park in Rugby, through regular volunteer sessions to clear pathways and improve wildlife habitats, which will give local people a sense of owner-ship.

Creating a peaceful reflection area in the park will give people the ability to connect with the natural world, alongside a range of fun informal learning activities and other events throughout the year.





# WORCESTERSHIRE

£78,597

awarded to 7 organisations



9,600m<sup>2</sup>

of environment improved



5 community spaces created or enhanced

Kidderminster

Redditch

Droitwich

Worcester

Great Malvern

6,261

beneficiaries



CORE

## WORCESTER COMMUNITY ACTION

Awarded £8,424

Worcester Community Action are the local infrastructure organisation for the city, providing a range of support services to the voluntary and community sector, as well as promoting volunteering and the many benefits it can bring to physical and mental health.

They work closely alongside many other voluntary and community organisations in Worcester, helping them to build and develop their offering through collaborative working and the sharing of best practice. One of their key objectives is to recruit volunteers across all sectors, empowering not only individuals but the whole community.

This is an essential service, allowing other organisations to concentrate on their main services, but also giving opportunities for some of the most vulnerable individuals in the community. They provide volunteers for community cafes, lunch clubs, dementia cafes, community transport and young carers, helping to support isolated and lonely people, older people and people with additional needs or poor mental health.

Our award will help Worcester Community Action with their running costs, including staffing, rent, utilities, volunteer travel and insurance.

PROJECT

## SEVERN ANGELS HOUSING & SUPPORT - RENOVATIONS

Awarded £19,781

Severn Angels Housing & Support is a grass-roots organisation dedicated to providing safe, women-only accommodation and support services for vulnerable women in Worcester and the West Midlands. They run a 19-bed facility across three adjacent properties in Worcester, offering a refuge for women fleeing domestic violence, those at risk of homelessness, care leavers, refugees, asylum seekers, and rough sleepers.

With our Community Fund grant, they have been able to upgrade their accommodation, significantly improving living conditions within the facility. This has enhanced the physical environment to better support the health and wellbeing of residents - modernising bedrooms and communal areas to create a more comfortable and dignified living space that fosters a sense of belonging and security.

The renovated spaces have provided a clean, vibrant, and homely atmosphere where the women who use their services can access support, helping lead to improved health and life outcomes.





# FULL LIST OF COMMUNITY FUND AWARDS 2024/25

## BIRMINGHAM AND THE BLACK COUNTRY

- Age Concern Stourbridge and Halesowen
- Base 25
- Birmingham Says No CIC
- Black Country Healthcare NHS Foundation Trust - Brighter Lives Charity
- Breakthru CIC
- CASBA
- CReART COLLECTIVE CIC
- New Bushbury Triangle Cooperative
- NICE - Centre for Movement Disorders
- Ormiston Shelfield Community Academy
- Our Scene CIC
- Sandwell African Women Association
- Spectra Arts CIC
- Walsall Society for the Blind
- Warley Woods Community Trust

## CHESTER

- CC Hub CIC
- Friends of Sandy Lane Park

## DERBYSHIRE

- Canaan Trust
- Clay Cross Foodbank

- Derby Food 4 Thought Alliance
- Derbyshire Positive Support
- Edale Mountain Rescue Team
- Freedom Leisure - Derbyshire Dales
- Island Community Haven CIC
- Links: CVS
- New Hope Community Church
- Pony Partnerships CIC
- Scropton Riding for the Disabled
- St George and St Mary's Church, Church Gresley
- Thrivemind Village CIC

## GLOUCESTERSHIRE

- Bredon Parish Council
- Fresh Hope
- Gloucestershire Health and Care NHS FT Charities
- Great Oaks Hospice

## LEICESTERSHIRE AND RUTLAND

- 2502 (Hamilton) Squadron RAF Air Cadets
- Arnesby Village Hall
- Ashby Allotments Association
- Buzzing Roots CIC
- Cancer Active Recovery Support (C.A.R.S)

- Communities Food and Wellbeing Hub
- Friends of Gilmorton School
- Friends of Nether Hall Association
- Melton and Oakham Waterways Society
- Mosaic 1898
- Rearsby Home-School Committee
- St Peters Highfields
- Swannington Heritage Trust
- Swinford Village Hall
- The Cooke E-Learning Foundation
- The Hub Educational Services CIC

## NOTTINGHAMSHIRE AND NORTH

- Beeston Community Resource CIO
- Building Lives Around Shirebrook Town CIC
- Elston Parish Allotments
- GrowNotts CIC
- Iremongers Pond Association
- Muskham Rural Community Centre
- North Lincolnshire Children's Literacy Trust
- Norton and Cuckney Village Hall

- Nottinghamshire Club For Young People
- Nottz Garden Project
- Queen Elizabeth's Academy
- Rumbles catering project
- S.H.E UK (Supporting, Healing, Educating)
- SNaP Development Project
- South Nottinghamshire Academy
- St Johns Parochial Church Council
- STAA
- Sturton le Steeple Village Hall
- The Friends of Bennerley Viaduct
- The Tin Hat Centre
- Treswell Village Hall
- Watersafe UK Search and Rescue Team
- Zephyr's

## SHROPSHIRE

- Bridgnorth Community First Responders
- Challenging Perceptions
- Festival Drayton Centre
- Short Wood Primary School
- Shropshire Beekeepers Association

- The Robert Jones and Agnes Hunt Orthopaedic Hospital Charitable Fund
- Yellow Ribbon Community Chaplaincy

## STAFFORDSHIRE

- Beyond Youth Project
- Claymills Pumping Engine Trust
- Heart of Tamworth
- Home-Start Newcastle Borough
- Lifeworks Staffordshire
- Read Easy Birmingham North, Tamworth & Lichfield
- Rehome Repurpose
- Royal Voluntary Service
- Staffordshire Network for Mental Health
- Staffordshire Search & Rescue Team
- The Staffordshire Pathway Project
- Weston Village Hall

## WARWICKSHIRE AND COVENTRY

- Bradby Club for Young People
- Cheylesmore Community Association Ltd
- Compassionate Kenilworth

- Grange Road Leisure Garden and Allotments
- Holbrooks Community Care Association
- Kineton Village Hall Management Committee
- May Blossom Farm CIC
- Newton Regis Friends, PTA
- Spongate Community Project
- Tree's residents group
- Warwickshire Wildlife Trust
- Worship & Leadership Academy

## WORCESTERSHIRE

- Blackwell Community Hall
- Bromsgrove Youth and Community Hub
- Droitwich First Responders
- HF Trust Limited
- Monksfield Allotment Association
- Severn Angels Housing & Support
- Worcester Community Action

## REGION WIDE

- My Life
- Skills Builder Partnership led by Enabling Enterprise CIC



Swinford Village Hall



Scropton RDA



The Benn Partnership Centre



Primary (Nottingham Studios Ltd)



Jack's Place Care CIC



Monksfield Allotments



# GET RIVER POSITIVE

Rivers transform and enrich the communities around them. And although water companies don't own rivers, we know we have a responsibility towards them.

River health is essential to the communities we serve, and we know there's more we can do to help our rivers to be the healthiest they can be. That's why we launched Get River Positive in 2022, alongside Anglian Water and Hafren Dyfrdwy.

Get River Positive is underlined by a set of pledges – five promises that we've made that will lead the charge in protecting and revitalising our rivers. The third of the five pledges is to support others to have access to and improve and care for rivers, and in the last year the Community Fund has supported seven projects with **£117,829** to do just that.



#### PLEDGE ONE

Ensure storm overflows and sewage treatment works do not harm rivers



#### PLEDGE TWO

Create more opportunities for everyone to enjoy our regions' rivers



#### PLEDGE THREE

Support others to improve and care for rivers



#### PLEDGE FOUR

Enhance our rivers and create new habitats so wildlife can thrive



#### PLEDGE FIVE

Open and transparent about our performance and our plans

#### Iremongers Pond Association Awarded **£2,000**

A storage container for volunteers looking after the green space and pond, linking to the River Trent.

#### Friends of Sandy Lane Park Awarded **£9,500**

A project to improve community access to the River Dee.

#### Grange Road Allotments Awarded **£7,680**

Brook clearing at the community allotment, linking to the River Sowe.

#### Melton and Oakham Waterways Society Awarded **£9,766**

A new work boat for a charity improving and maintaining local waterways.

#### Staffordshire Search & Rescue Team Awarded **£10,062**

Funding for a boat, engine, underwater sonar equipment and safety equipment for the search and rescue unit.

#### Tree's residents group Awarded **£4,035**

A project to involve the community in clearing and improving a brook linking to the River Sowe.



Severn Trent's investments in local treatment have spurred a remarkable recovery in river quality, flourishing with returning animals, abundant fish stocks, and frequent sightings of kingfishers and water voles. Our project will showcase this, using community knowledge and interpreting it for the public.

**Peter Collins,**  
Operations Director

## THE FRIENDS OF BENNERLEY VIADUCT

Awarded **£74,786**

An 'Iron Giant' striding across the Erewash Valley, Bennerley Viaduct stands 20 metres high and 400 metres long. Closed to trains in the 1960s and left derelict, in the care of the Friends of Bennerley Viaduct it is now seeing a new lease of life. A magnet for walkers and cyclists, and now a vibrant home for nature, the Beneath the Bridge project ties together the people and environment of Bennerley Marsh.

Beneath the Bridge is profoundly linked to water. The River Erewash, the floodplain, and surrounding wetlands form a vibrant, watery mosaic of habitat. The wet grassland

and lagoons harbour orchids and support large populations of great crested newts, frogs, dragonflies, and damselflies.

This project involves the public in an ambitious habitat improvement scheme. In collaboration with Derbyshire Wildlife Trust, the project will train volunteers in monitoring exercises and enhancements to bolster habitats. This watery haven for people and wildlife will be interpreted through engagement, including school programs, nature days, River Watch events, walks, and presentations.





Jack's Place Care CIC

## GOVERNANCE

### Our responsibilities and objectives

Our customers, and the communities we live and work in, are at the heart of everything we do. That's why we decided to support local charities and community groups with over £20 million in the ten years from 2020.

Our internal team look after the day-to-day running of the fund, including processing applications, carrying out due diligence and internal reviews, making payments and post-award monitoring. The team are also responsible for promoting the scheme and encouraging good quality applications from the communities most in need of our support.

We know how much time and effort goes into applying, so we encourage prospective

applicants to read all the guidance on our website and get in touch with us to check the request is a strong fit to the fund. This last year alone, we received over £21million pounds worth of applications so even though we'd love to, we can't support every request.

To avoid disappointment when projects aren't funded, we share constructive feedback to applicants to support them with any future bids, as well as signpost them to other funding opportunities where possible.

We are targeted at keeping running costs to 8-10% of the total fund, in line with similar grant providers, which is deducted from the total value.

## ANDY DUFF BURSARY

As part of our Community Fund, we ring-fenced £250,000 over 5 years to support disadvantaged individuals with a bursary that offers a 'life chance' they wouldn't usually get. The fund, named after Severn Trent's previous Chairman, Andy Duff, who had a real passion for spotting and nurturing talent amongst young people, provides financial bursaries to students.

The Andy Duff Bursary programme has welcomed 30 students over the last 5 years. We are pleased to say we saw an additional 6 students from the programme graduate in 2024, and have a total of 21 still on programme across the 4 cohorts.

We welcomed 7 students for a summer placement this year, with 100% of respondents saying it met or exceeded expectations.

The students are studying a mix of subjects at university, including engineering, economics, business, technology and

science degrees and have all been partnered with a business mentor, who are supporting them through their studies and providing meaningful careers guidance.

### A quote from one of the bursary beneficiaries:



I appreciate the experience greatly, it has really helped me develop and I feel much more equipped to enter the workforce.



## ROLE OF THE COMMUNITY FUND CUSTOMER PANEL

After our internal team assesses the applications, the strongest ones are forwarded to our independent Community Fund Customer Panel for review. This Panel consists of representatives from various backgrounds and interests across our region. They review

project applications over £20,000 twice a year in person and project applications under £20,000 twice a year remotely. Over the five-year period, we aim to distribute funds fairly across our area, proportionate to the number of Severn Trent customers in each region.





# SEVERN TRENT COMMUNITY FUND

## Annual Review 2024/25

To find out more, visit:  
[stwater.co.uk/communityfund](https://stwater.co.uk/communityfund)

or contact:  
[communityfund@severntrent.co.uk](mailto:communityfund@severntrent.co.uk)



WONDERFUL ON TAP