



SEVERN TRENT COMMUNITY FUND

Annual Review
2022/23

WONDERFUL ON TAP

SEVERN
TRENT



Volunteers get a good deal of satisfaction knowing their time is making a positive difference in the community where they live and work.

Friends of
Bennerley Viaduct



Moseley and Kings Heath Shed

CONTENTS

A MESSAGE FROM OUR CEO

This is the third year of our five-year commitment to support our communities by donating more than £10 million to local organisations and good causes across our region.

Since we launched the Community Fund in 2020 we have made awards of more than £7.6 million to support the places where our customers live, including the £1 million Emergency Fund we donated to communities to deal with the impact of Coronavirus.

This includes £1.82 million awarded last year to support projects across our region. At the same time, we provided a further £212,000 in core funding to help local community organisations facing rising running costs.

While these are impressive figures, for me it's more important to see the positive impact such investments make to people and their communities. In the last year our Community Fund has helped over 116 great organisations, supporting more than 1,000,000 people.

While there were many highlights over the last 12 months, our involvement in the Birmingham 2022 Commonwealth Games really helped to underline our support to our region. We were the Games' Official Nature and Carbon Neutral partner, helping to create a positive legacy of sustainability that will be seen for years to come. As part of this, we directed £263,000 from our Community Fund to help projects Care for Nature, in celebration. This has supported 33 projects on topics such as green spaces, recycling, carbon offsetting and as you'd expect, water saving.

This review is full of inspiring stories of people from all walks of life coming together to support others and make the most of the places they live. I am very proud that we've been able to play a part in supporting the wonderful work they do. Please take some time to read through their stories and learn about some of the fantastic things happening across our region.

Liv

Liv Garfield,
**Chief Executive,
Severn Trent**



Shrewsbury Food Hub



NOTE FROM THE CHAIR

I'm very pleased to welcome you to our third annual review of the Severn Trent Community Fund. My name is Ian and I'm Chair of the Customer Panel that works with Severn Trent in deciding which projects and organisations receive grant awards from the Fund.

Although this is my first year as Chair, I'm not new to the work of the Fund, as I've been Vice-Chair since 2020. As a result, I'm well aware of the support we give to great people doing wonderful things for our communities.

I'm impressed that a company like Severn Trent has customers making decisions on awards from its Community Fund. There are nine of us in total, from across the Severn Trent area. We meet up every quarter, with monthly virtual meetings in-between, to look at the latest applications we've received from good causes.

It's been another busy year, with over 400 applications for funding coming in to us for review. Every time we get together, we're always impressed at the range of

organisations out there doing amazing work in their local communities. We have lots of discussions and have to make some tough decisions as a result.

This year we've been able to hold our quarterly Customer Panel meetings at some of the projects we've supported in the past, like the National Space Centre in Leicester and Ashbourne Pavilion. It's great to see the impact of some of our decisions.

For the year to come I'm looking forward to working alongside the rest of the Panel as we continue to see the amazing ideas, commitment and hard work that comes from the communities we support.

I hope you enjoy reading about the impact of the fund as much as we've enjoyed supporting these amazing projects.

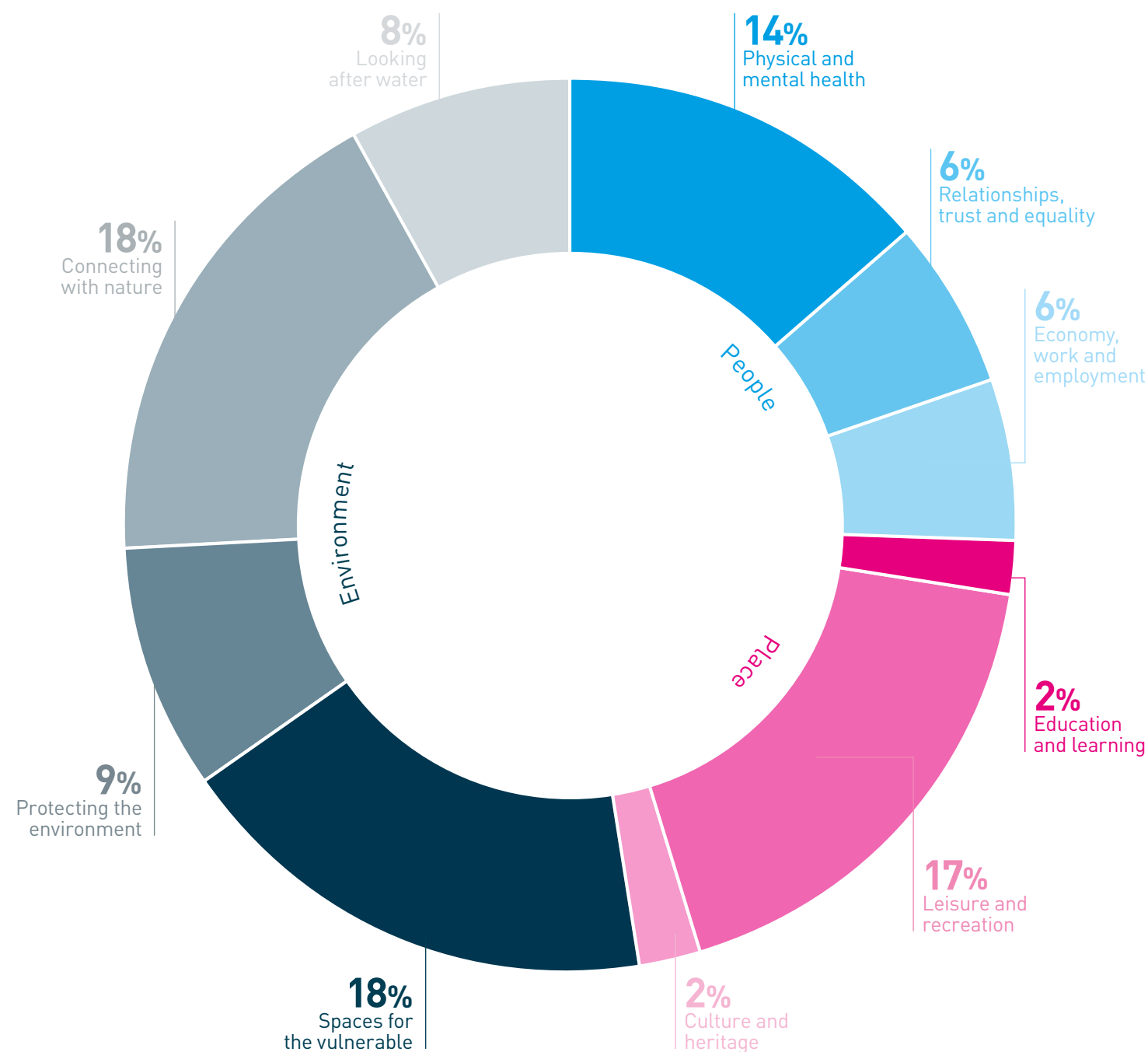


Panel meeting at National Space Centre, Leicester

OUR YEAR IN NUMBERS



○ Funded projects and organisations across the Severn Trent region



£1,823,623
awarded to 99 projects

c£212,771
awarded to 17 organisations
to support core funding



1,000,000+
beneficiaries*



102 community spaces
created or enhanced*

388,815m²
of environment improved*



£470,979
awarded in 10-20% most
deprived communities

*Based on predictions from submitted applications and actual figures from completed projects.



PROJECT CASE STUDY: PEOPLE

Projects that help people to lead a healthier life and gain new skills

Cruse Bereavement Support - Supporting more men in grief

Awarded **£62,986**

For more than 40 years Cruse Bereavement Support West Midlands has provided free, life-changing services for children and adults. With more than 240 specialist Bereavement Volunteers offering one-to-one support, advice and information, alongside a National Helpline, website and online chat, Cruse aims to make sure all bereaved people have somewhere to turn when someone dies.

However, relatively fewer men seek their services; surveys suggest almost one-third of men feel there's a stigma around asking for help. In the West Midlands, 3 in 4 suicide deaths are male, and those bereaved by suicide are at an increased risk of dying by suicide themselves.

The right support at the right time can help. Cruse is working alongside men's groups to deliver targeted early intervention and awareness sessions. Our funding means they will recruit and train 12 specialist male bereavement volunteers across the West Midlands. They'll deliver fortnightly sessions at workplaces, men's clubs, community venues and online.

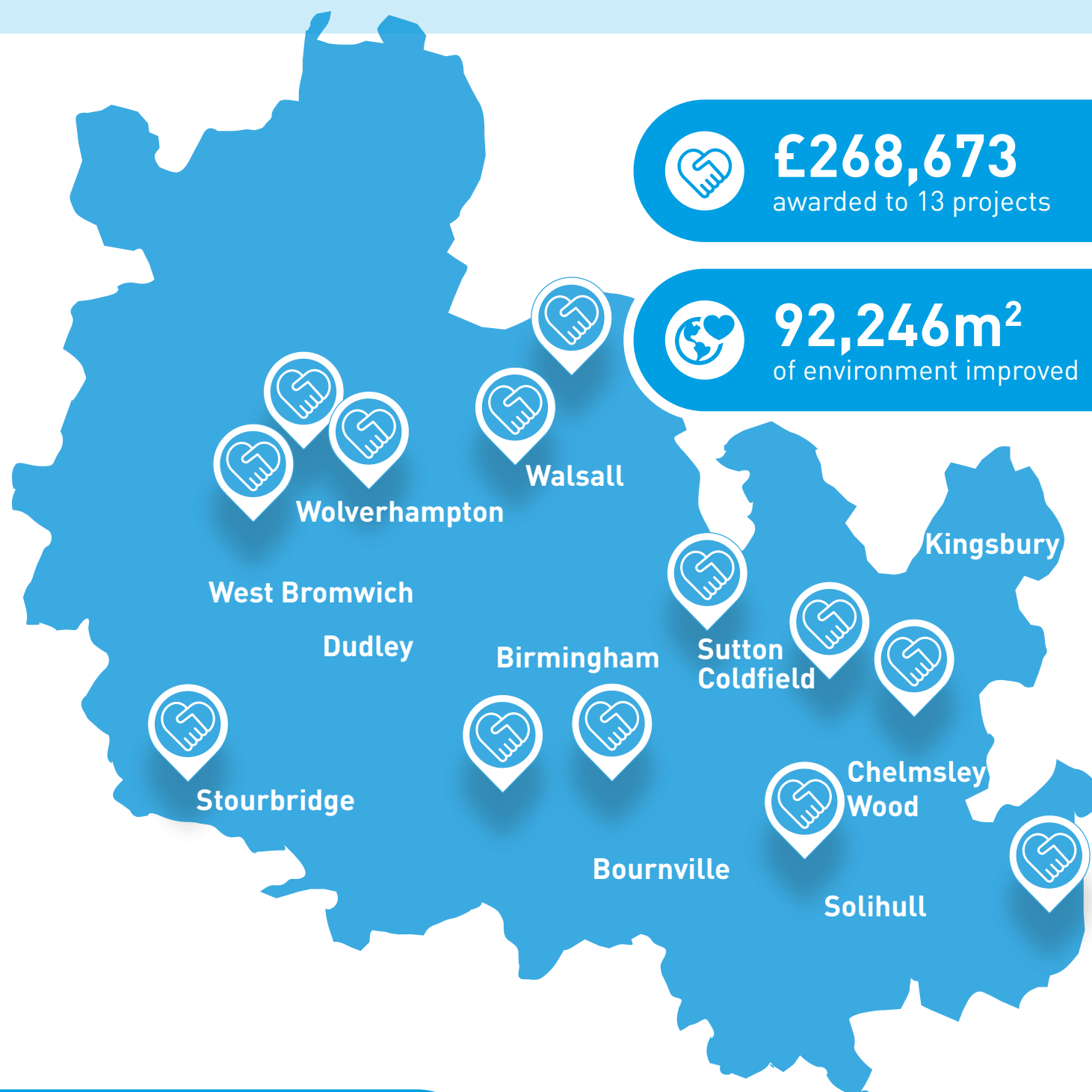


Men are more likely to grieve in isolation. Currently, just 22% of our clients in the West Midlands are male. Our aim is to improve wellbeing, resilience and reduce loneliness for more men experiencing grief in the Severn Trent region.

Tim Scott,
Service Coordinator



BIRMINGHAM AND THE BLACK COUNTRY



£268,673
awarded to 13 projects



92,246m²
of environment improved

9 community spaces
created or enhanced



22,390
beneficiaries



DID YOU KNOW?

31,866

is the number of
veterans estimated
to be living in
Birmingham*

*birmingham.gov.uk/info/50265/supporting_healthier_communities/2434/veterans/2

HUGGLEPETS IN THE COMMUNITY - POND AND WILDLIFE CENTRE

Awarded **£45,724**

Based in Wolverhampton, HugglePets in the Community offers a range of animal therapy focused work for local residents of all ages. The not-for-profit organisation supports and works alongside individuals and groups to improve mental health, combat loneliness, challenge behavioural issues and promote psychological wellbeing.

As part of its existing work within the community and with schools across the Black Country, HugglePets in the Community also provide sessions on the importance of recycling water and growing food, as well as offering work experience and volunteering opportunities.

Our Community Fund grant has helped them to renovate a pond and wildlife area, and offer more animal therapy sessions. The new space will help to teach people about water usage including the water cycle, growing their own food and how animals and aquatics have an impact on the environment and can improve mental wellbeing.



It's wonderful that Severn Trent has backed the vital work we are doing through this grant – we're very grateful.

Ian Dixon,
Director



ST JOHN AND RED CROSS DEFENCE MEDICAL WELFARE SERVICE - VETERANS AND ARMED FORCES FAMILIES

Awarded **£41,336**

Military life poses unique and complex challenges for members of the Armed Forces Community. DMWS' experienced welfare teams provide close support to veterans and military families across the UK. Dealing with issues such as social isolation and loneliness, financial worries, housing concerns, substance misuse, domestic abuse, and more, DMWS promotes empowered and sustainable recovery.

Our grant means DMWS can extend their service, providing a dedicated Welfare Service to support veterans and military families in Birmingham. The programme will provide guidance and resources and strive to help those in need back on the path to recovery and wellbeing.

The project will also allow DMWS to research the needs and potential gaps in support for Black, Asian and minority ethnic (BAME) Armed Forces members and their families, ensuring their needs are met in the years to come.



This funding will allow us to reach an even wider audience and provide more tailored support to those who need it.

Paul Gaffney,
CEO

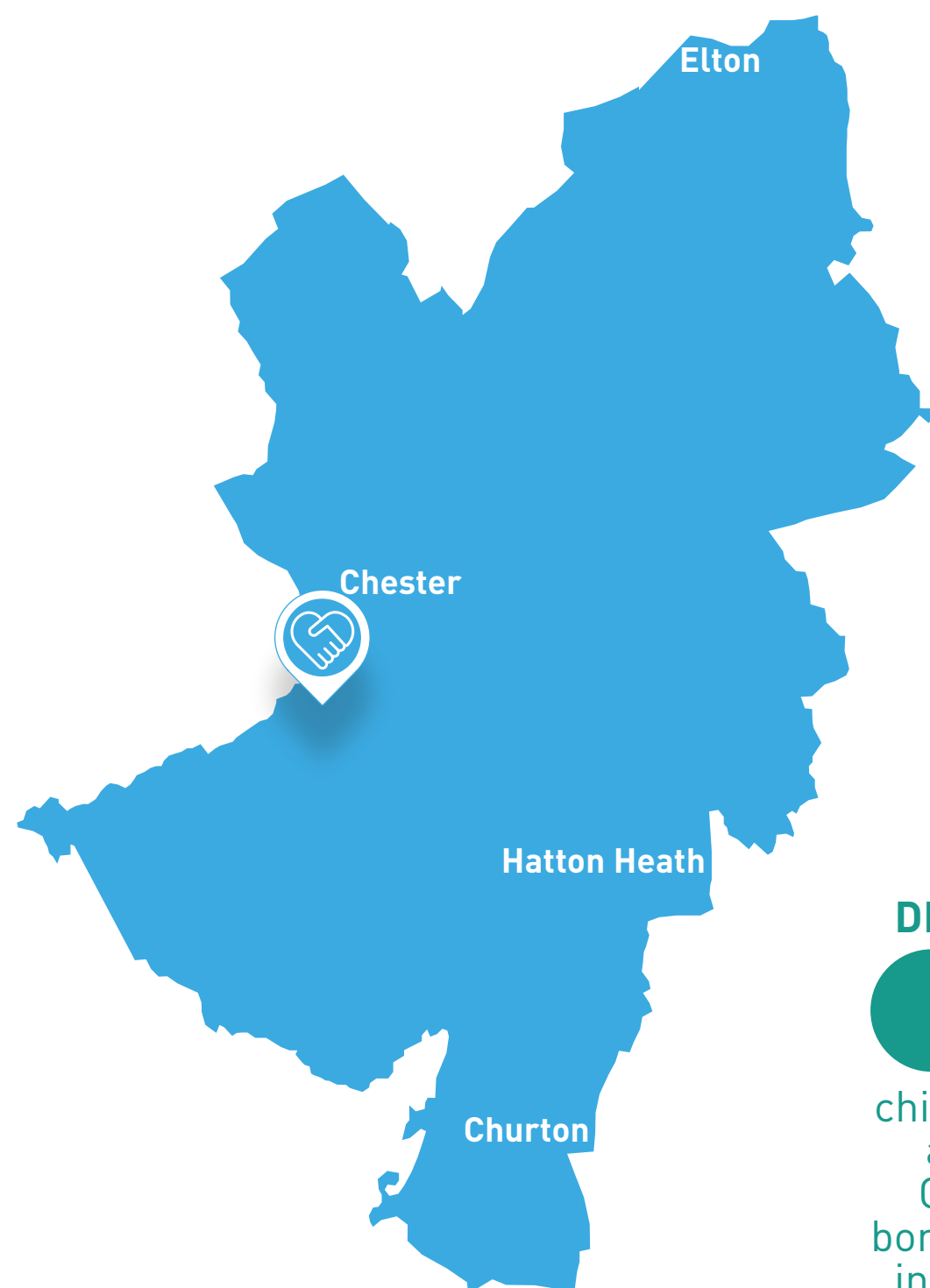


CHESTER

£9,425
awarded to 1 project



720
beneficiaries



DID YOU KNOW?

8,322

children in Chester and the wider Cheshire West borough are in low-income families*

*cheshirewestandchester.gov.uk/your-council/key-statistics-and-data/state-of-the-borough/inequality-and-deprivation

PASSION FOR LEARNING CIO - NATURE PLAY

Awarded **£9,425**

Learning can be fun! That's what Passion for Learning believe. And since 2011 they've been getting adults from all walks of life to work with children and give them the opportunities they need to flourish, learn and reach their potential. Supporting children and families living in poverty and those facing significant challenges in their home life, they provide 1:1 support, clubs and events in the Cheshire West and Chester area.

The challenges of the past couple of years have impacted heavily on the children that they support, and many have become isolated within their communities, with limited engagement with the natural environment.

Through our grant they will be able to offer supervised nature play days to children from 12 local schools, inspiring them to play outside and enjoy the nature they can find on their doorstep. Sessions will take place in local wildlife and woodland areas where children can enjoy nature based crafts, games and activities. They'll receive resources and ideas to take home that encourage them and their families to continue to connect with nature, grow confident in their independence and support their mental wellbeing.



DERBYSHIRE

£237,322
awarded to 5 projects



4 community spaces
created or enhanced



716,643
beneficiaries



41,230m²
of environment improved



DID YOU KNOW?

140,000

people are living
with heart and
circulatory
diseases in
Derbyshire*

*bhf.org.uk/-/media/files/health-intelligence/4/derbyshire-bhf-statistics.pdf

TIBSHELF AND DISTRICT COMMUNITY FIRST RESPONDERS - NEW RECRUITS KIT AND MEDICAL EQUIPMENT

Awarded **£9,900**

Working side by side with East Midlands Ambulance Service, Tibshelf and District Community First Responders provide emergency medical assistance to patients in the area dialling 999.

Professionally trained volunteers, First Responders are despatched by the Ambulance Service and are often the first on site, calming the situation for the patient and providing vital reassurance for their loved ones. They also have a proactive role, visiting local fetes and events to promote their service and teach CPR to the public.

Following recent increases in volunteer numbers, the team needed additional equipment, such as defibrillators, heart rate/oximeters, pad kits and blood pressure monitors. Our grant has helped them to kit out the team, making sure they can continue offering first-class care and wellbeing to people in their local community when they need it most.



WHISTLEWOOD COMMON LTD - WATERLESS COMPOSTING TOILET

Awarded **£3,213**

Set in ten acres in Melbourne, South Derbyshire, Whistlewood Common is a community-owned social enterprise that was set up in 2013 by local people with the help of the National Forest Company.

Designed with permaculture principles, Whistlewood helps to encourage an appreciation of the environment among people of all ages and backgrounds. The site is off-grid and provides lots of practical benefits from being in nature - improving individual and community wellbeing, whilst addressing climate and ecological issues at a local level.

Our funding will go toward the cost of an additional composting toilet on site. This will help the Common to serve more visitors in the years to come, whether it's families with young children, the elderly, or those with mental or physical issues.

GLOUCESTERSHIRE

£128,014
awarded to 4 projects

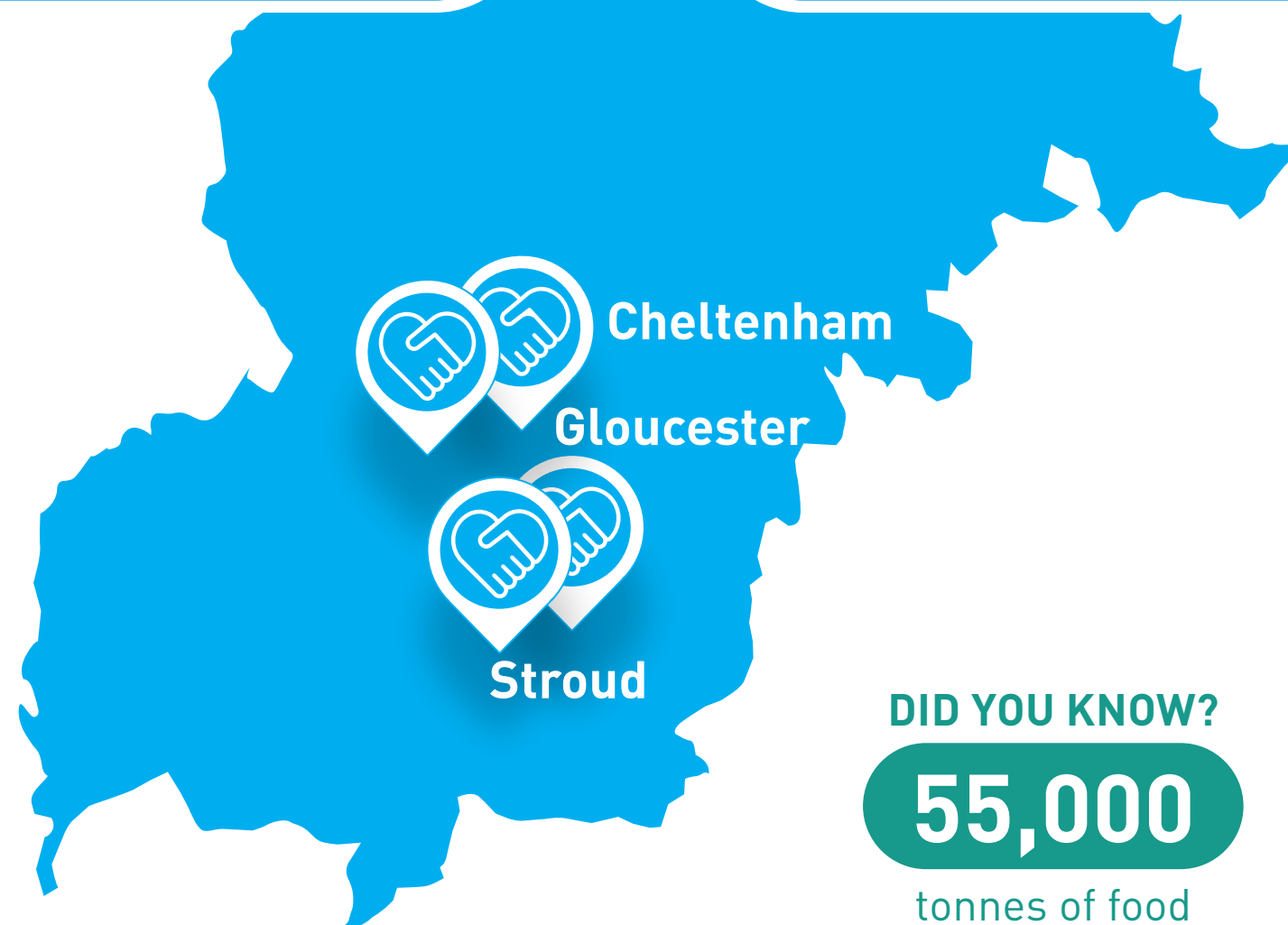


21,201m²
of environment improved

4 community spaces
created or enhanced



11,380
beneficiaries



DID YOU KNOW?

55,000

tonnes of food
waste were created
by homes and
businesses in
Gloucestershire
in 2021*

* gloucestershire.gov.uk/gloucestershire-county-council-news/2022-news-archive/news-november-2022/recycle-your-food-to-help-cut-waste-and-carbon/

ROOTS COFFEE AND COMMUNITY - ROOTS REFILLS

Awarded **£21,380**

Great food shouldn't cost the earth. Food waste is unacceptable. And no child in our neighbourhood should go to bed hungry.

That's what Roots Coffee and Community believe. Formed in 2014 in Kingsholm in Gloucester, Roots aim to make the neighbourhood a better place for everyone. Through their ethical trading ethos and support of local community groups, they are creating a sense of community and making their local area a more positive place to live and work.

Our grant will enable them to set up their very own refill shop, a sustainable plastic-free alternative where food will be priced as low as possible to be affordable and accessible to all. They will be playing their part in reducing food waste by rescuing viable food destined for landfill and transforming it into healthy, frozen takeaways in biodegradable packaging. And they're also going to partner with local schools, using the new space as a training kitchen where local families can come and learn to cook alongside their children.



STROUD VALLEY SCOUT GROUP - COACH HOUSE REFURBISHMENT

Awarded **£87,192**

Stroud Valley Scout Group offers activities for young people and provides a space for many different groups of the wider community to use, including music, fitness, mindfulness and wellbeing activities, celebrations, meetings, and workshops.

On their site is a derelict Grade Two listed coach house, which has sadly been unused for more than six years due to disrepair and safety concerns. There's a clear demand for more space from many in the area, including local charities providing outreach and support for local vulnerable people.

Our funding means the Group can carry out a complete refurbishment from roof to floor, making the building watertight, installing new electrics, kitchen and bathroom facilities, flooring, walls and windows.

So - a new facility for the community and a beautiful building back into use? Everyone's a winner!



PROJECT CASE STUDY: PLACE

Projects that help to create better places to live in and use

The Langdale Trust - Sensory room and improved toilet facilities

Awarded **£7,580**

Spencer's Retreat farm, near the Warwickshire village of Berkswell, offers a safe and inclusive space for families and children with Special Educational Needs or Disabilities. Spencer's Retreat is run by The Langdale Trust, a charity with a long history of supporting children and families in need.

Set in six acres, there are pigs, goats, sheep, horses and an alpaca. With no crowds, queuing, or noise - and well away from main roads - it's ideal for families who need to avoid the hustle and bustle of mainstream farm attractions.

Our funding means the farm can build a new sensory room. This will help children and adults improve their visual, auditory and tactile processing skills, by providing a sense of calm and comfort. The sensory room will help users learn to self-regulate their behaviours, improving focus and wellbeing.

At the same time, they'll be able to add new and improved toilet facilities - including disabled toilets and running water - improving accessibility, sustainability, and inclusivity. This will increase their capacity for families in the years to come.

All in all, it's a bright future for Spencer's Retreat!



It's more than just a farm, it's a lifeline for many families that due to their circumstances struggle to find respite or places to visit.

Charlie Giles, Trustee



LEICESTERSHIRE

£106,046
awarded to 8 projects



29,857m²
of environment improved

23,305
beneficiaries



7 community spaces
created or enhanced



DID YOU KNOW?

70%

of the population
of Leicestershire
live in areas
classed as urban
city and town*

*lsc-online.org/uploads/leicestershire-socioeconomic-summary.pdf?v=1623058208

CROSS COUNTIES RADIO - OUTREACH ROADSHOW VEHICLES AND STAGE

Awarded **£10,000**

Broadcasting live from Lutterworth, close to the point where Leicestershire, Northamptonshire and Warwickshire meet, Cross Counties Radio is a totally volunteer-run station. With a mix of music, local and national news, the station has gained many fans in recent years.

The team at Cross Counties know that many people in the local area have been living with confidence issues, loneliness, depression and social isolation since Covid.

Relying on people in the community for volunteers, they realised that for many, travelling to their Lutterworth base was not an option. So, if would-be broadcasters couldn't come to the radio station, let's take the radio station to the broadcasters!

Our Community Fund grant has helped Cross Counties buy two Luton vans to be converted into a mobile broadcast studio and training/green room. With professionally fitted interiors, wall linings, liveries and a pull-out stage, this takes an already great community resource to the next level.



WILLOW BANK SCHOOL - MUSIC ROOM

Awarded **£6,000**

Willow Bank is part of Leicester's Children's Hospital School, working with young people between the ages of 11 and 16 who are referred with mental and/or physical health difficulties. They aim to provide a good standard of education so students can build their knowledge, skills and resilience to be better equipped to enjoy learning and life.

Students who haven't been able to experience mainstream education are sometimes at risk of missing out on the many opportunities that other schools may have to offer. This is where the power of music comes in. Music can be massively effective in helping young people struggling with their mental health needs. It gives them an opportunity for self-expression in a safe, non-judgmental environment. Our grant will help the school renovate their music room, with soundproofing, new equipment, instruments and furniture.

Students get to develop their musical skills, alongside the therapeutic benefits of having a safe space to listen to music, and somewhere to reset emotionally before getting back into classes.

NOTTINGHAMSHIRE

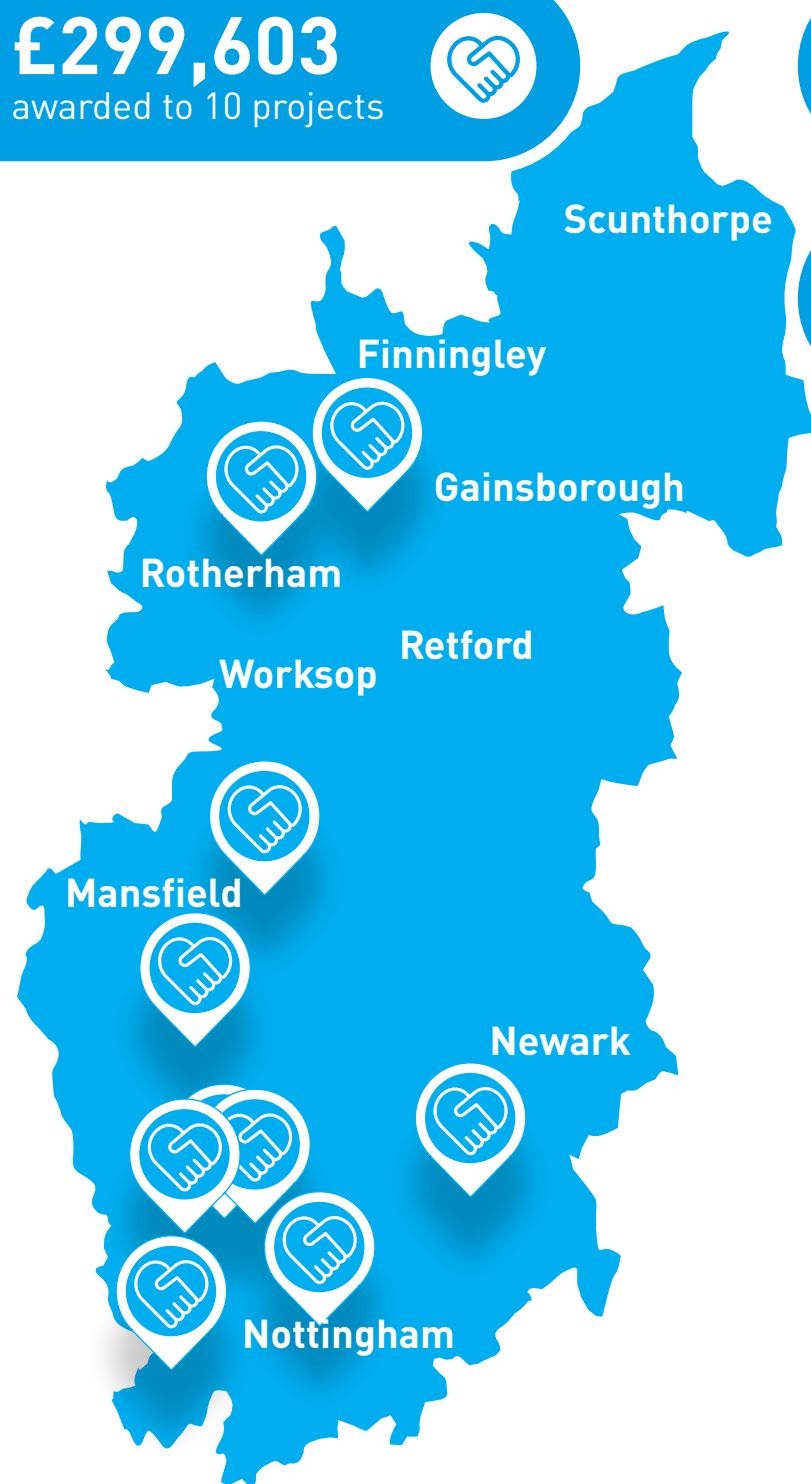
£299,603
awarded to 10 projects



67,584m²
of environment improved



12 community spaces
created or enhanced



29,526
beneficiaries



DID YOU KNOW?

BEING CREATIVE

can increase positive emotions, reduce depressive symptoms and anxiety, and improve the function of our immune systems*

*diversushealth.org/the-mental-health-benefits-of-creativity

URBAN WORM— WORM BENCHES

Awarded **£7,468**

Did you know a single tablespoon of worm manure can feed a plant for three months? Well, you do now!

The Urban Worm is a Nottingham-based social enterprise that is passionate about these soil superheroes. Making and selling upcycled worm farms, they want more of us to let worms wriggle and squirm their way into our day-to-day lives, supporting organic waste management and organic gardening. At the same time, The Urban Worm works with schools, community groups and businesses to fly the flag for sustainable living and the power of these little earthy engineers.

Linking up with the charity Men in Sheds, they're building 11 Worm Farm Benches, 10 of which are going to local schools and community groups. Each Bench has a viewing panel so everyone can see the worms going about their work. They aim to support the community to reduce its waste and promote ecological growing methods.

So with thanks to the Community Fund, it's one small step for man, one giant wriggle for wormkind.



PRIMARY (NOTTINGHAM STUDIOS LTD) - PRIMARY GARDENS

Awarded **£107,209**

Primary is a contemporary visual arts charity. Over the past decade, they have transformed a disused school in an inner-city area of Nottingham into a new cultural resource. They provide high quality studios for over 50 resident artists, a free programme of exhibitions and events which are open to everyone, alongside a bookshop, galleries and their award-winning Small Food Bakery.

Funded to develop and improve outdoor areas, Primary are creating a publicly accessible multi-use garden that will include growing space, a sheltered outdoor workshop area, a sensory garden terrace, flexible events space, and an innovative 'Materials Store' – creating a resource to re-use and recycle materials from local arts spaces/businesses. The project involves the transformation of outdoor area, creating a visible, accessible, and sustainable multi-use space in an inner-city community.

The space will enable people to engage in a range of activities – from creative workshops and projects, gardening, cooking, social gatherings, and learning new skills around sustainable materials.



SHROPSHIRE

£130,112
awarded to 6 projects



17,285m²
of environment improved



7 community spaces
created or enhanced

Oswestry

Shrewsbury

Ludlow

DID YOU KNOW?

90%

of people enjoyed
themselves and
want to do more
outdoors after using
a Shropshire right
of way network
or park and
countryside site*

78,950
beneficiaries



SHROPSHIRE COUNCIL - SHINING LIGHT ON STANMORE COUNTRY PARK

Awarded **£65,582**

Attracting over 65,000 visitors a year, Stanmore Country Park is a 40-hectare green space with woodlands, grassland and a wildflower meadow.

With our grant, Shropshire Council will be making a range of improvements to enhance and protect this wonderful space, working alongside the Friends of Stanmore Country Park volunteer group.

This includes upgrading paths to make them more accessible for wheelchair and pushchair users, woodland management, pond enhancement and habitat improvements for local wildlife.

They will also be working with a local primary school to design a family discovery trail that will encourage young people to get more physically active, learn more about nature and explore all the park has to offer.



RURAL ART HUB - MOTHER SHIPPON

Awarded **£8,467**

We're helping Rural Art hub create in comfort.

The Hub, based in a rural area near Ellesmere, is an inclusive space allowing people of all ages to take part in creative activities and experiences. Supporting wellbeing and mental health, they help people to learn new skills and gain confidence. Their workshops and projects include a weekly club for children, workshops for older people, drawing and painting courses, social prescribing activities and art clubs for local primary schools.

Our grant will enable them to renovate and insulate their Mother Shippon studio, meaning they can continue running their sessions for the community through the winter months and support wellbeing all year round.

The project will focus on cost-effective insulation and heating carefully considering how the building can preserve its sense of heritage as well as being low-carbon, environmentally sustainable and accessible to all.





PROJECT CASE STUDY : ENVIRONMENT

Projects that will help look after our environment and water

Arkwright Society - Cromford Waterpower

Awarded **£199,093**

Sir Richard Arkwright realised the power of water over 250 years ago, when he founded Cromford Mills in Derbyshire, the world's first successful water-powered cotton spinning mill. Employing over 600 workers at the time, the mill is now seen as the birthplace of the modern factory system.

Now a UNESCO World Heritage Site managed by the Society that bears Arkwright's name, the mill has been missing its water wheel for well over a century. But all that is to change, with support from our Community Fund.

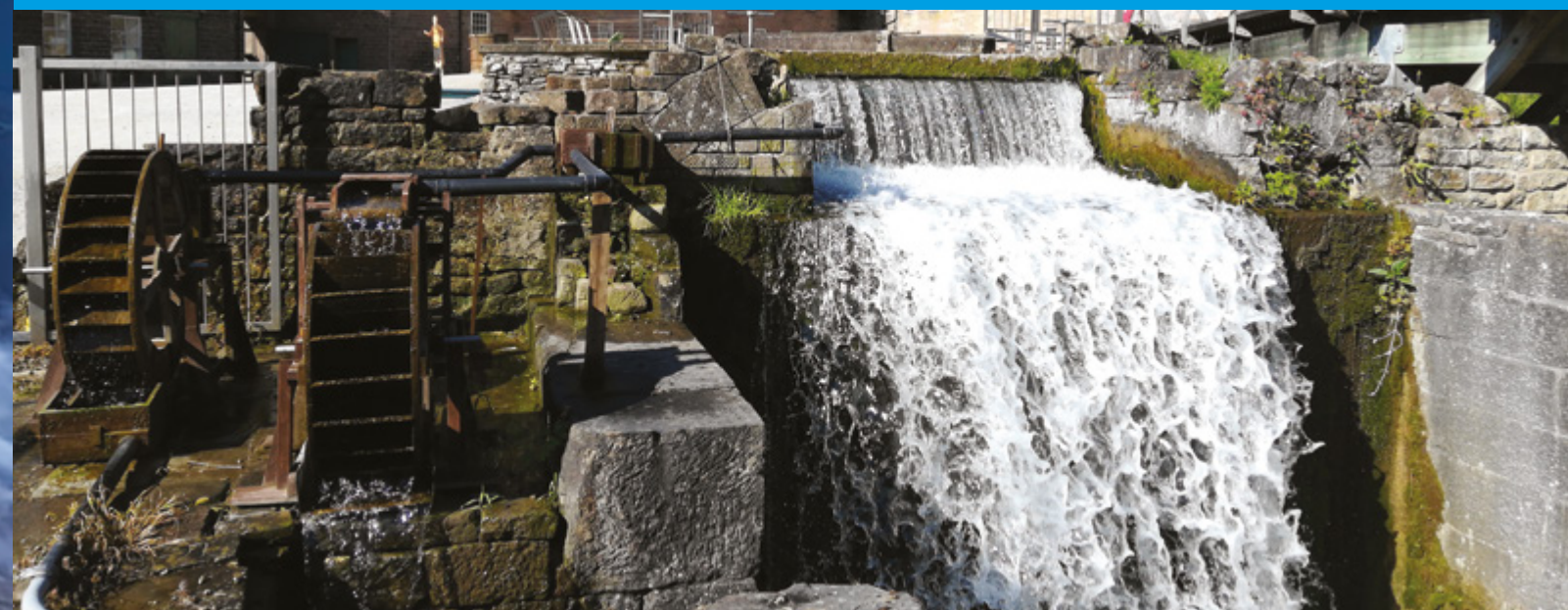
The mill will have a new waterwheel, running a 20kW turbine to provide power for the site. At the same time, the project means new water source heating to a mill building and a refurbished 12kW hydro turbine at Cromford village cornmill.

With a new visitor experience supported by renewable energy, we think Sir Richard would approve.



This is a fantastic project to return waterpower to the mill that created the first factory system at the start of the Industrial Revolution. As part of our drive to transform Cromford Mills into a more sustainable and greener site, we hope this project will spark more interest in sustainable energy.

Simon Gill,
Operations Director



STAFFORDSHIRE

£239,873
awarded to 7 projects



10,300m²
of environment improved



9 community spaces
created or enhanced

DID YOU KNOW?

1.4M

people alive
in the UK today
have survived
a heart attack*

**Stoke-
on-Trent**

**Newcastle-
under-Lyme**

**Burton-
upon-Trent**

Stafford

Cannock Lichfield

Tamworth

19,092
beneficiaries



*bhf.org.uk/what-we-do/news-from-the-bhf/contact-the-press-office/facts-and-figures

SPLAT STAFFORDSHIRE CIC - SPLAT COMMUNITIES

Awarded **£63,766**

There's a bright future ahead for SPLAT and the people they support in Stoke-on-Trent.

SPLAT – which stands for Social, Physical, Learning, Activities, Together – create and deliver inclusive play sessions for children aged 4-12 years old. With activities that include arts and crafts, games, baking and cooking and sports games, SPLAT sessions help bring communities together. Children learn new skills such as communication, social skills and building confidence in a fun and exciting way.

They also support and train unemployed young people as qualified and experienced project workers, helping them to gain nationally recognised qualifications, valuable work experience and improve their prospects.

Our grant will help SPLAT expand their support to an additional three neighbourhoods. They will provide a safe place for younger children, promote healthier lifestyles through physical activities, and support their mental health and wellbeing. The project will also give more work experience and employment opportunities to young people based in those areas.



AEDDONATE SCHEME

Awarded **£67,290**

Sudden Cardiac Arrest kills around 10,000 people a year in the UK. Since 2014, AEDdonate has helped with the installation of roughly 2,000 defibrillators nationally. And thanks to a grant from the Community Fund, their great work is going from strength to strength.

Based in Stone, AEDdonate works with communities, businesses, clubs, and schools across the country to raise awareness about Sudden Cardiac Arrest, teach people the correct way to deliver CPR, and educate the community on how to use a defibrillator.

Our grant will provide community defibrillators in 10 new locations across the county, purchase CPR training mannequins, support an outreach program to provide training and fund a Volunteer Coordinator to help them reach even more people.

AEDdonate will also introduce an educational van to raise awareness and host drop-in sessions where people can ask questions, find out where their nearest defibrillator is and have a go at practicing some CPR.



With this funding, we'll be able to reach out to many more people in the community.

Jamie Richards,
CEO



WARWICKSHIRE

£103,424
awarded to 8 projects



970m²
of environment improved



6 community spaces
created or enhanced



11,520
beneficiaries



DID YOU KNOW?

14.6

million people
in the UK have
a disability*

*scope.org.uk/

NUNEATON AND NORTH WARWICKSHIRE EQUESTRIAN CENTRE - VOLUNTEER AND COMMUNITY COORDINATOR

Awarded **£11,066**

Nuneaton and North Warwickshire Equestrian Centre Riding (NNWEC) is a purpose-built disabled riding facility and has been part of the local community for nearly 45 years. The Centre offers riding therapy, learning and training opportunities for over 200 disabled adults, young people and children each week.

The Centre relies on its dedicated local volunteers who assist with riding and other tasks each week.

However, throughout the pandemic NNWEC lost a number of loyal and committed volunteers due to personal reasons.

Now re-opened but with depleted financial reserves, the Centre needs to recruit and train the next generation of volunteers. Our Community Fund grant will cover a 12-month role to rebuild volunteer teams, allowing NNWEC to refocus on serving the needs of the local community.

Things can now move on at a gallop, thanks to the Community Fund!



SALTISFORD
CANAL
TRUST

SALTISFORD CANAL TRUST LTD - 'THE FOLLY' COMMUNITY SPACE

Awarded **£9,880**

For 40 years, Saltisford Canal Trust has been restoring the historic Saltisford canal arm, originally the terminus of the Birmingham and Warwick Canal.

Transformed from a derelict site into tranquil moorings, gardens and orchards, the Saltisford Canal Centre is now a much-loved site for the local community and boaters alike. It's a working site, with several residential moorings, alongside attractions for visitors too.

Their dayboat, Saltie II, recently retired from service after many years taking day-trippers along the canal. With the help of a grant from our Community Fund, the Trust are re-purposing her as a land-based community meeting and education space.

Now sitting next to the Centre's sensory gardens, Saltie II is looking forward to continuing to serve the people of Warwick for decades to come.

WORCESTERSHIRE

£38,131
awarded to 4 projects



550m²
of environment improved



3 community spaces
created or enhanced



5,810
beneficiaries



SUSTAINABLE LEDBURY - STREAM IMPROVEMENTS AT LEDBURY TOWN TRAIL

Awarded **£3,462**

Sustainable Ledbury are a local community group, building links with local groups, societies, businesses, and schools to promote more sustainable living.

Over the past few years much of Ledbury's Town Trail, a popular walking trail, has become overgrown and neglected, putting off walkers who want to enjoy the path. The ditch alongside has become clogged up which doesn't help drainage of rainwater from the path or the diversity of plant life.

Our grant will support the group's volunteers to cut back the overgrown vegetation, remove litter, dig out debris and plant marginal plants that are in keeping with the area. The group will also place information boards along the Trail on the history of the town, and the flora and fauna to be found.

The project will improve the appearance of the area, encouraging more people to use it and enjoy this natural area of the town. Improving the stream to allow it to flow more freely will also enhance the habitat for amphibians and local wildlife.



THE OLD NEEDLEWORKS FOUNDATION - COMMUNITY CONNECT CAFE

Awarded **£21,341**

We're helping The Old Needle Works Foundation to stitch together their local community.

Based in Redditch town centre, The Foundation offers support to people who are vulnerable, isolated, and disadvantaged, as well as hosting other organisations and charities who support the community.

Taking referrals from a range of sources, they aim to support those who are marginalised from statutory services, and act as a safe place where people can go to develop positive mental health, resilience, and healthier lifestyles. Support services include 121 wellbeing coaching, peer support groups, parenting support, community learning, work placements and volunteering opportunities.

The Foundation wanted to open a café space to be a community resource - a warm, safe hub for anyone who needs it. Our grant will fund a dedicated Wellbeing Coordinator to establish the community café. They'll provide a support service, run sessions on positive wellbeing and cooking on a budget, while linking to local agencies to provide work placements and volunteering opportunities.



FULL LIST OF COMMUNITY FUND AWARDS 2022/23

BIRMINGHAM AND THE BLACK COUNTRY

- Brownmead Primary Academy
- Cruse Bereavement Support
- HugglePets in the Community
- Inclusive Sports Academy CIC
- Kingstanding Regeneration Trust
- Kinver High School and 6th Form
- Lane Avenue/Moorside Community Allotment
- Pelsall Community Association
- St John and Red Cross Defence Medical Welfare Service
- The Langdale Trust
- Wolverhampton Samaritans
- Wolves Play Cafe Community Interest Company
- Woodgate Valley Urban Farm

CHESTER

- Passion for Learning CIO

DERBYSHIRE

- Arkwright Society
- The ELM Foundation
- Tibshelf and District Community First Responders
- Whistlewood Common Ltd
- Wingerworth Allotment Co-operative Society Ltd

GLOUCESTERSHIRE

- Minsterworth Free School Foundation (The Harvey Centre)
- Roots Coffee and Community
- Stroud Community Agriculture Ltd
- Stroud Valley Scout Group

LEICESTERSHIRE

- Action Homeless (Leicester) Ltd
- Barrow Pre-School Playgroup
- Broughton Astley Parish Council
- Choices Allotment Club
- Home Start South Leicestershire
- The Oakham Canal Green Corridor Project
- The Sunflower Community Radio Association (Cross Counties Radio)
- Willow Bank School (The Children's Hospital School)

NOTTINGHAMSHIRE

- Ecoworks (Nottingham) Ltd
- Forest Town
- Nottingham Counselling Service
- Now Church
- Portland College (Charity)
- Primary (Nottingham Studios Ltd)
- Scrooby Parish Council
- Summerwood Community Garden Ltd
- The Urban Worm
- Zephyr's

SHROPSHIRE

- Great Dawley Town Council
- Rural Art Hub
- Shropshire Council
- The Albrighton Trust
- The Cavalier Centre
- West Mercia Search and Rescue

STAFFORDSHIRE

- 7th Lichfield (St Michael's) Scout Group
- AEDdonate
- Beyond Youth Project
- Rethink Mental Illness
- Rising Brook Ground Force
- SPLAT Staffordshire CIC
- St Paul's C of E Primary School

WARWICKSHIRE

- Arrive Alive
- Coventry Resource Centre for the Blind
- IAR CIC
- Lenton's Lane Baptist Church
- Nuneaton and North Warwickshire Equestrian Centre Riding for Disabled
- Perkisound CIO
- Saltisford Canal Trust Ltd
- Worship and Leadership Academy

WORCESTERSHIRE

- Droitwich First Responders
- Far Forest Primary PTA
- Sustainable Ledbury
- The Old Needle Works Foundation



Phoenix Foundation



Sense



Far Forest PTA



Choices Allotment

GET RIVER POSITIVE

Rivers transform and enrich the communities around them. And although water companies don't own rivers, we know we have a responsibility towards them.

River health is essential to the communities we serve, and we know there's more we can do to help our rivers to be the healthiest they can be. That's why we launched Get River Positive in 2022, alongside Anglian Water and Hafren Dyfrdwy.

Get River Positive is underlined by a set of pledges – five promises that we've made that will lead the charge in protecting and revitalising our rivers.

The third of the five pledges is to support others to have access to and improve and care for rivers, and the Community Fund has supported projects with £278,017 to do just that.



PLEDGE ONE
Ensure storm overflows and sewage treatment works do not harm rivers



PLEDGE TWO
Create more opportunities for everyone to enjoy our regions' rivers



PLEDGE THREE
Support others to improve and care for rivers



PLEDGE FOUR
Enhance our rivers and create new habitats so wildlife can thrive



PLEDGE FIVE
Open and transparent about our performance and our plans

Cromford Waterpower, Derby
Awarded **£199,093**

Reinstating renewable hydro power at a heritage site in Derbyshire, including maintenance of historic water features which regulate water flow to the mills.

Experience Paddle Sports, Staffordshire
Awarded **£6,624**

A project to expand paddle boarding with more equipment and volunteers to run sessions.

Spa Ponds, Nottinghamshire
Awarded **£45,000**

A programme of environmental, biodiversity and community access improvements at a historic nature reserve, including replacing pipes between ponds and the river Maun.

Whinze and Gibbet Hill Nature Reserve
Awarded **£27,300**

Environmental improvements to a wildlife site including improved access to the river.

FOREST TOWN - SPA PONDS: PIPES, PATHS AND PONDS PROJECT

Awarded **£45,000**

Spa Ponds is a community-owned nature reserve in the Forest Town area of Mansfield, Nottinghamshire. Giving local people the opportunity to get closer to nature, the vital habitat for plant and animal species is managed by members and supporters of the Forest Town Nature Conservation Group (FTNCG).

Our Community Fund grant means the FTNCG can make the site even better for visitors and wildlife by helping prevent pollution from getting into the ponds and improving footpaths. The work will also involve planting reeds and flowers around the ponds, removing some trees and branches to let more light in, and adding barriers to protect sensitive parts of the site.

As a result, local people will find it even easier to enjoy the benefits of nature, right on their doorstep.

Work to replace pipes has started



River Maun



We're really proud to have been the Official Nature and Carbon Neutral partner of Birmingham 2022 Commonwealth Games, helping them in their pledge to leave a carbon neutral legacy and deliver the most sustainable games yet.

To celebrate we temporarily focused the fund to support local community projects that help care for nature linking to one or more of these aims; Green Spaces, Water Saving Heroes, and Recycling and Making the Most of Resources.

The best part was that all our wonderful customers got to vote on their favourite project! We received an amazing 8,700 votes submitted over 24 days.

£263,000 was awarded to 33 great projects across our region, all helping to care for nature and the environment!



GOLD AWARD: £20,000

THE EDWARD MARSH CENTRE (KSCA)

In 1953 the Marsh family gifted land to residents of the South Staffordshire village of Kinver, to provide a playing field, recreation ground and community centre.

These days it's a busy hub for the community, with all sorts of events, sports facilities, a miniature railway and Community Café. The Centre works with young people with learning disabilities offering work experience placements. It also helps young people looking to gain community volunteer hours for either their CVs or awards like The Duke of Edinburgh.

A new project for the Centre, 'Planting for Wildlife' will provide a focal point for local people – especially children – helping them to enjoy the natural environment and learn about sustainability. It aims to increase biodiversity in a newly created wetland by providing trees and soft planting.

Supported by a Community Fund award, the project will create the ideal habitat for 33 protected species, as well as providing an outdoor learning environment and a place to simply enjoy being in nature.



GOLD AWARDS: £20,000

- **Castle Bromwich Historic Gardens**, Birmingham - Going with the flow
- **Chapter (West Cheshire) Ltd** - Growing Together: an allotment project supporting mental health
- **Coventry Mercia Lions Club** - Coventry Canal Basin Community Peace Garden
- **Down to Earth Derby** - Down to Earthworms compost club
- **Shrewsbury Food Hub** - Food Heroes: Taste Not Waste Campaign
- **St Nicholas CofE school PTA**, Kenilworth - Nature Hub
- **The Edward Marsh Centre**, Kinver - Planting for wildlife
- **The Skill Mill Limited** - The Skill Mill Birmingham 2022

SILVER AWARDS: £10,000

- **Farmeco Community Care Ltd**, Nr Bingham, Notts - Community Care for Nature and Water
- **Fruit and Nut Village**, Birmingham - Druids Heath Project
- **Island Community Haven CIC**, Derby - Community Allotment
- **Less2Landfill** - part of Bermuda Phoenix Community Centre, Nuneaton - Improving Recycling
- **St Paul's C of E School PTA**, Leamington Spa - Re-establish our school pond and nature area
- **Windmill Community Gardens**, Nottingham - Wildlife and Water Gardens

BRONZE AWARDS: £5,000

- **Achieving Results in Communities (ARC)**, Leamington Spa - Improving Wildlife Habitat
- **Binley Woods Allotments Association**, Warwickshire - Communal Greenhouse
- **Bonterre CIC**, Worcester - Bonterre Rainwater Harvesting
- **Chadsgrove Special School**, Bromsgrove - Rainwater harvesting
- **Coppice Primary School PTA**, Sutton Coldfield - Forest School
- **The Friends of Moseley Bog and Joy's Wood Nature Reserve** - Improving urban nature reserve

RUNNERS UP: £1,000

- **Ashfield Voluntary Action (AVA)**
- **Beech Tree Road Allotment Group**
- **Biddulph Town Council**
- **Bulwell Forest Garden**
- **Goscote Lane Allotments**
- **Kings Heath Boys' Charitable Trust**
- **Make it Sustainable**
- **Northfield Arts Forum**
- **Oasis Community Church, Centre and Gardens**
- **Root-and-Branch Out CIC**
- **St Andrew's Parish Centre Trust**
- **STAA**
- **The Friends of Hednesford Park**



Make it Sustainable, Balsall Heath Birmingham

CORE FUNDING

Following the events of recent years, many organisations including charities find themselves struggling to meet their day to day running costs.

When we created the Community Fund in 2019, we decided only to fund new projects as we accepted we weren't experts in our region's needs.

Now our Community Fund is in its third year, we have built good relationships across the region with Community and Voluntary Sector support agencies and have taken

the time to learn more about the needs of organisations in the sector.

As a result of the current cost of living crisis, we opened a temporary funding stream for core running costs, not just for new projects.

This core funding helps organisations be flexible and responsive to change. It enables charities and good causes across our region become more stable and sustainable, giving them the breathing space they need to set out and develop their plans for the future.

We awarded £212,771 to 17 organisations supporting nearly 45,000 beneficiaries.

- **Birmingham Community Matters**, Birmingham and the Black Country
- **ConGens**, Birmingham and the Black Country
- **Platform for Life**, Chester
- **High Peak Homeless Help CIO**, Derbyshire
- **Priors Park Neighbourhood Project**, Gloucestershire
- **Confident Communities**, Leicestershire
- **Rumbletums Cafe**, Nottinghamshire
- **Beeston Rylands Community Association**, Nottinghamshire
- **The Core Centre Charity**, Nottinghamshire
- **The Vine Community Centre**, Nottinghamshire
- **Notts LGBT+ Network**, Nottinghamshire
- **Crowsmill Craft Centre C.I.C.**, Shropshire
- **Community Together CIC**, Staffordshire
- **Middleport Matters Community Trust**, Staffordshire
- **The Globe Group CIC**, Staffordshire
- **Volunteer Friends**, Warwickshire
- **Shine A Light Childhood Cancer Support**, Warwickshire



We are very grateful to Severn Trent Community Fund for this contribution towards our core costs, which will help us continue our work in boosting small voluntary and community groups in Birmingham. The lasting impact of Covid-19 and now the cost of living crisis have made life harder for volunteers and people setting up, running or growing small groups - but their work in bringing people together has never been more needed. It means so much to us that BCM can continue supporting groups to address the issues most important to their communities and make good things happen across our city. Thank you.

Jo Burrill, CEO



Nikki Cooper Photography

BIRMINGHAM COMMUNITY MATTERS: SUPPORTING SMALL VOLUNTEER-LED GROUPS

Awarded £11,150

Small voluntary organisations serve a range of needs in their local communities. But who helps the helpers? Who gives them advice on how to get started, manage and improve what they do?

Step forward, Birmingham Community Matters (BCM). They run virtual and face to-face sessions alongside community anchor organisations in the city, helping volunteers of small groups to be equipped to tackle the issues they face efficiently and with confidence.

BCM run sessions on topics such as fundraising, governance, volunteer recruitment, marketing, and offer one-to-one specific support online, too. They bring together volunteers running groups to support and learn from each other and from their skilled 'Helpers'. Helpers are BCM volunteers with valuable experience in the voluntary sector who can share information, experience, contacts and ideas.



Saxon Court

GOVERNANCE

Our responsibilities and objectives

In 2019 we committed to giving away more than £10m over five years (2020-25) to community projects across the region, aiming to make a real difference in the communities we serve.

Our internal team look after the day-to-day running of the fund, including processing applications, carrying out due diligence and internal reviews, making payments and post-award monitoring. The team are also responsible for promoting the scheme and encouraging good quality applications from the communities most in need of our support.

We know how much time and effort goes into applying, so we encourage prospective applicants to read all guidance

on our website and get in touch with us beforehand. Our Fund Officers are on hand to help applicants before, during and after an award.

We aim to keep the application success ratio to a minimum of 1 in 6 of all eligible applications. Unfortunately, even though we'd love to, we can't support every request. To avoid disappointment when projects aren't funded, we share constructive feedback to applicants to support them with any future bids, as well as signpost them to other funding opportunities where possible.

We are targeted at keeping running costs to 8-10% of the total fund, in line with similar grant providers, which is deducted from the total value.

ROLE OF THE COMMUNITY FUND CUSTOMER PANEL

Following internal review, the strongest applications are taken to our independent Community Fund Customer Panel for review.

The Panel is made up of representatives from across our region, with different backgrounds and interests, who review the applications and have the final decision on which projects are funded.

The Panel meets on a quarterly basis to review applications over £10,000 and review applications under £10,000 in the months in between.

Across the five years we will encourage the panel to distribute funds fairly across our patch, proportionate to the number of Severn Trent customers per region.

ANDY DUFF BURSARY

As part of our Community Fund, we ring-fenced £250,000 over 5 years to support disadvantaged individuals with a bursary that offers a 'life chance' they wouldn't usually get. The fund, named after Severn Trent's previous Chairman, Andy Duff, who had a real passion for spotting and nurturing talent amongst young people, provides financial bursaries to students.

We're pleased to welcome our third cohort of students onto the Andy Duff Bursary scheme this year. As well as continuing to support our 12 students from previous years, we're excited to be supporting an additional 13 students. The students are studying a mix of subjects at university, including; engineering, economics, business, technology and science degrees and have all been partnered with a business mentor, who are supporting them through their studies and providing meaningful careers guidance. We hosted 5 of the students for a summer placement in 2022, with an additional 2 interns choosing to spend their year in industry placement with us. This summer we're looking forward to welcoming 18 of the students to join us for a summer placement.

Meet Lumumba

A chemical engineering student studying at Birmingham university, Lumumba is interested in the water treatment process and methods of recycling water more efficiently due to the global problem of water scarcity. The bursary has meant Lumumba has bought a laptop for university coursework and our mentor is helping him to build his network, accessing opportunities to gain more insight into different fields.



SEVERN TRENT COMMUNITY FUND

Annual Review 2022/23

Find us at:

stwater.co.uk/communityfund

or contact:

communityfund@severntrent.co.uk

to find out more



WONDERFUL ON TAP