



fat oils and grease in a sewer

**Severn Trent Water Ltd**

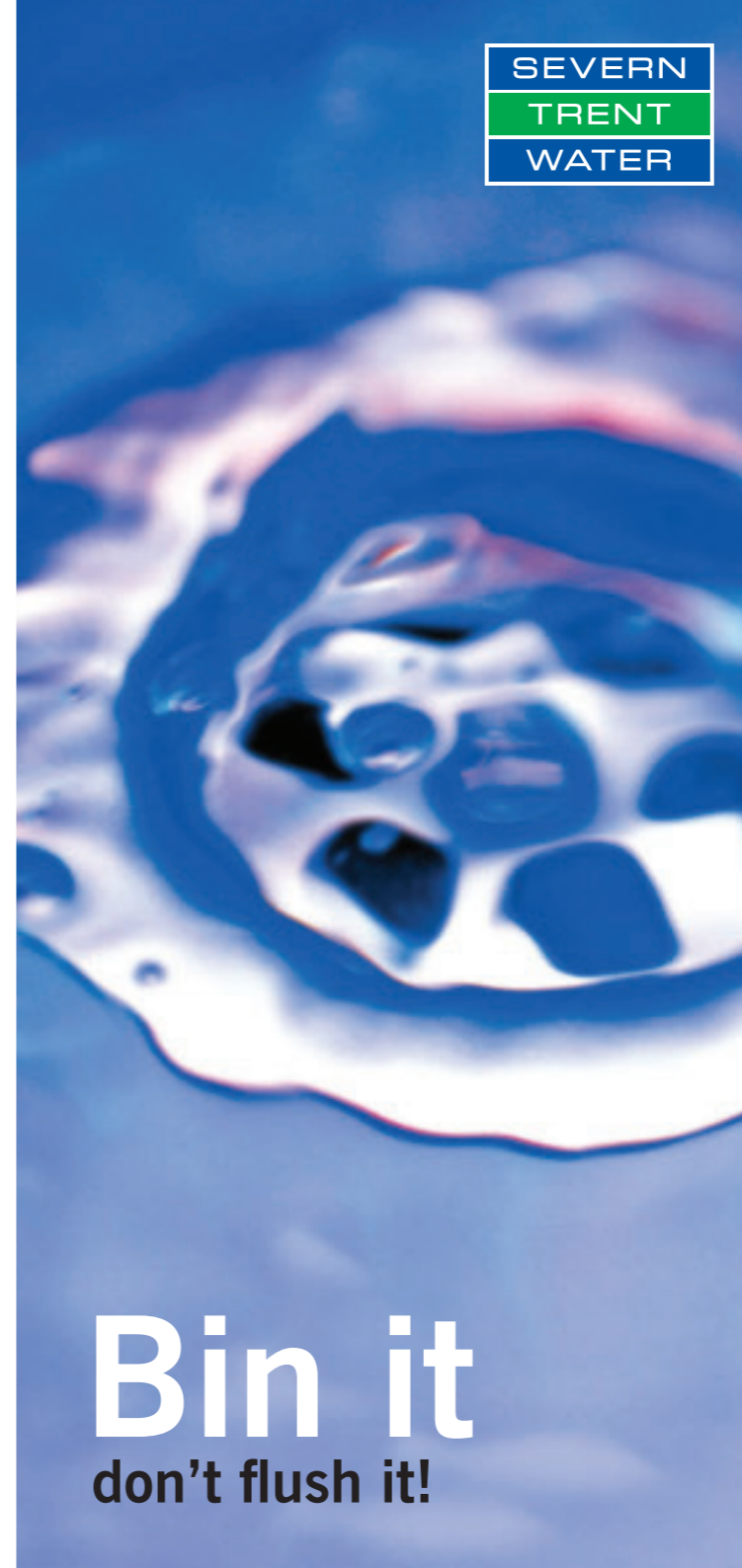
2297 Coventry Road  
Birmingham B26 3PU

www.stwater.co.uk

For operational emergencies  
please call 0800 783 4444



This document is available in alternative  
formats including Large Print and Braille.  
For more information please:  
call 08457 500 500  
textphone 0800 328 1155  
customer.relations@severntrent.co.uk



## Leaks

Please report leaks, don't assume someone else will. We will always respond to your call because water is a precious commodity none of us can afford to leave running down the street.

**Please call 0800 783 4444 to report a leak.**



after cleaning the sewer



**recycle**  
When you have finished with  
this leaflet please recycle it

RB 2009/10.110 TB

# Bin it don't flush it!

**Every day sewers get blocked and raw sewage floods into homes, gardens, roads and watercourses. The majority of these blockages are avoidable.**

On average Severn Trent Water attend around 20,000 blockages each year. 55% of these blockages are caused by domestic misuse and of these blockages a high percentage go on to cause pollution and sewer flooding. Please use this leaflet for guidelines on the correct way to dispose of certain products.

# Bin it don't flush it!

Sewers and drains, whether private or public, are designed to deal with human waste, toilet paper, waste water and nothing else. Any other items, even if they claim to be flushable, should be disposed of responsibly in either the bin or the nearest recycling/disposal bank.



fat oils and grease removed from a Severn Trent Water sewer

## Fat Facts

- Fat can grow in size, attracting other particles until it either breaks off and travels down the sewer until it gets stuck, or it will build to such an extent it blocks the sewer and causes an escape of raw sewage
- Rats love fat (apparently the high protein increases their sex drive) so fat helps to produce even more rats
- You can recycle vegetable oils and fats, and help wildlife at the same time, mix cooled fat with bird seed, nuts, bacon rind etc and hang it in trees for the birds to enjoy.

## Do not flush any of the following:

- |                    |                      |
|--------------------|----------------------|
| Sanitary products  | Contact lenses       |
| Disposable nappies | Incontinence pads    |
| Liners             | Colostomy bags       |
| Baby wipes         | Bandages             |
| Cleaning wipes     | Plasters             |
| Contraceptives     | Syringes and needles |
| Cotton buds        | Medicines            |
| Cotton Wool        | Tights               |
| Razors             | Dental floss         |
| Toothbrushes       | Cigarette butts      |

All the above items cause us difficulties in both the sewerage system and the treatment process. Misuse could cause blockages near your property, leading to sewage flooding into, or around, your home.

Blocked sewers can also affect your local flora and fauna. Raw sewage can contaminate habitats and watercourses, displacing wildlife and disrupting local ecosystems.



Contact your local council for details of your nearest household waste recycling centre.

## Correct Disposal

The items opposite should be disposed of responsibly – this includes;

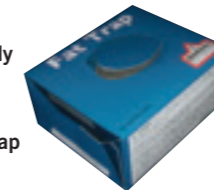
- **Medicines** - they should be returned to your local pharmacy. Remember: always keep medicines out of the reach of children, even when disposed
- **Syringes and needles** - they should be disposed of in special sharps bins or ask at your local GP's, hospital or pharmacy.

If you find a syringe or needle do not touch it. Report it to the local authority who will deal with it appropriately and safely

- **Razor blades** - place in a rigid container with a lid and place in the bin
- **Sanitary towels, tampons and panty liners** – special disposal bags are available from pharmacies. Alternatively wrap well and place in the bin. Always dispose of in the special bins placed in public toilets
- **Liquid wastes** need careful consideration and your local council should be contacted for advice
- **Fats, oils or greases** - allow the fat to cool before scraping it into a suitable container (a used tin or carton) and place in the bin – see the section about Fat Traps for more details
- **All other solid waste** - if necessary wrap well and place in the bin

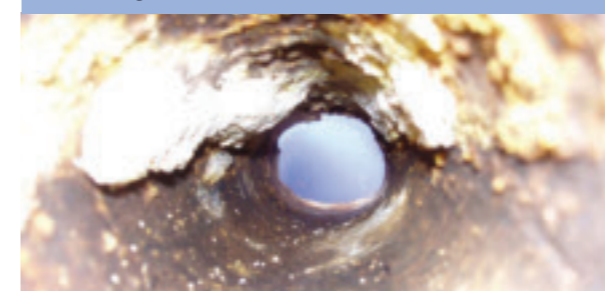
In the kitchen no foodstuffs should be swilled down the sink – they should be scraped into your bin. And this includes fats, oils or greases you use to cook with. When cleaning your grill pans or frying pans the fat should be left to cool and then scraped into a suitable container such as an empty tin or carton and then disposed of in the bin.

Alternatively we do have a Fat Trap (a specially designed container you can put your fat in) which you can get by calling 08457 500 500 or order online at [www.severntrent.co.uk/fattrap](http://www.severntrent.co.uk/fattrap)



Never swill fat, oil or grease into the sink and subsequently into the sewer. Even if you use detergent and hot water the fat will solidify on hitting the cold sewer walls and will collect other fat and debris which will eventually block the sewer and cause flooding.

fat oils and grease in a small diameter sewer



## Pipe Connections

Please check your pipes are correctly connected to the sewers. There are three types of drainage taking water from your home;

- **Foul sewers** - for toilet waste or waste from your sink and washing machines for treatment,
- **Surface water sewers** - takes water from roofs and drives into local watercourses,
- **Combined sewers** - takes both foul and surface water for treatment.

As you would expect, a misconnection can have catastrophic results. The water from a washing machine or sink entering a watercourse will cause pollution and lead to the death of wildlife. A homeowner or landlord is responsible for the drainage on a property. Under Section 59 of the 1984 Building Act your local authority could serve a notice if there is a misconnection that needs correcting in line with the law. If misconnections are not corrected within the permitted time limit further action may be taken.

Please check your connections or get a plumber in if you think your connections need changing.